

Portsmouth International Port Port Statistics 2010



A service of
Portsmouth
CITY COUNCIL 

www.portsmouth-port.co.uk

PORTSMOUTH INTERNATIONAL PORT

PORT STATISTICS 2010

Portsmouth International Port

About Portsmouth Harbour
Local Ferry Services and Cruise Facilities
Private and Commercial Wharves

Commodities

Imports 2010
Exports 2010
Summary of Imports and Exports by Commodity 2002 - 2010
Graph of Commodity Totals
Graph of Principal Trading Areas
Foreign Tonnage 2005 - 2010
Graph of Foreign Tonnage 2010
Coastwise Tonnage 2010
Graph of Monthly Tonnage 2010
Graph of Docks Tonnage by Quay 2010
Summary of Tonnage by Quay 2003 – 2010
Annual Trends - Tonnage 1997 – 2010
Annual Trends - Commercial Shipping 2002 - 2010
Comparison of Cargo Landed at Commercial Wharves 2009 –2010

International Cruise and Ferry Port

Portsmouth International Port
Passenger Terminal Building and Travel Centre
Roll on/Roll off and other Ferry Services
Graphs of Monthly Throughput: -
 Passengers 2010
 Vehicles 2010
 Freight 2010
Graphs of Annual Growth 1976-2010
 Passengers
 Vehicles
 Freight
 Shipping
Shipping Movements 2002 -2010

Portsmouth International Port

About Portsmouth Harbour

Portsmouth Harbour is known the world over as a Naval Port and home and maintenance base for the Royal Navy. The Royal Dockyard had its beginnings as long ago as the 13th Century.

Portsmouth International Port is in the ownership of Portsmouth City Council and is controlled by the Executive Member for Planning, Regeneration, and Economic Development.

In 1839 an Act of Parliament sanctioned the then City Council to carry out construction for the betterment of the Port, which in those days meant the Quays at Camber Docks. It also authorised servants of the Council to collect Harbour Dues on ships using the Port and additional dues for all cargo passing over the quays.

Since those early days further Acts have been obtained to authorise the expansion of the Port, the building of new quays, modernisation of existing facilities and to construct a Continental Ferry Port for Portsmouth.

Portsmouth International Port, with its commercial quays and associated local businesses including the ferry companies continue to invest in new infrastructure, vessels and site development in response to the demand.

The number of Royal Navy ships now based in Portsmouth has decreased but the facilities within the Naval Dockyard are once again being used to build and repair boats, not only for the Royal Navy but also Foreign Navies and commercial ventures.

Tall Ships, Ocean Racers and Global Challenge vessels have all made Portsmouth the start or finish of their sea going adventure, with their crews enjoying leisure ashore, in the numerous waterside bars, restaurants and shopping areas to choose from.

A variety of cruise vessels now make tourist calls in Portsmouth with their passengers taking advantage of the sights and sound of Portsmouth City and southern Hampshire, as well as those which commence /conclude their cruise in Portsmouth.

The waters in and around Portsmouth Harbour are rarely quiet. As well as the Royal Navy, local ferries and traffic to the commercial quays and International Ferry Port, Portsmouth Harbour also provides a safe haven for a large number of yachts and other small craft within the growing number of marinas and safe mooring areas.

Local Ferry Services and Cruise Facilities

- a) **Wightlink, Isle of Wight Ferries** (www.wightlink.co.uk) provides Portsmouth's only car and passenger service to the Isle of Wight from a roll-on/roll-off berth at Gunwharf Terminal.

Four vehicle ferries service the **Portsmouth** to **Fishbourne** route, which carries the bulk of **Wightlink's** freight traffic as well as leisure traffic. The route is especially suited to the shipment of abnormal loads as the vessels have double width ramps and can accommodate extra long or heavy loads, subject to sufficient spread of weight. High vehicles can also be accommodated with prior notification. All terminals have tide-following linkspans connecting shore with ship for easy loading.

Wightlink's foot passenger catamaran service operates between **Portsmouth Harbour Station** and **Ryde Pier Head** and has direct rail connections on either side. Trains from London, Wales and the West Country, as well as local South Coast towns all deliver passengers direct to Portsmouth Harbour Station.

The service operates from the early hours of the morning until after midnight. For most of the day a frequent service is offered every half-hour, and the Island is just 22 minutes away on this catamaran route.

- b) Operating from the Hoverport on the seafront at **Southsea**, **Hovertravel Ltd** (www.hovertravel.co.uk) has run their regular passenger only hovercraft service to **Ryde** since 1965.

With an average crossing time of just 10 minutes and departures every 30 minutes for most of the day, rising to every 15 minutes during peak times during the summer season, **Hovertravel** provide a "Frequent and Fast" service.

Hovertravel also provides a connecting bus service to **The Hard Interchange, Portsmouth City Centre** and **Portsmouth & Southsea** railway station. The bus meets most hovercraft arrivals, and return journeys are timed to connect with departures to **Ryde**.

- c) With almost 100 crossings every day, over three and a half million passengers in 2009 took the route from **Gosport**, commuting to work, or for shopping and pleasure trips to **Portsmouth** proving it really is "**Shorter by Water**". Taking a sea trip of approximately 4 minutes across the Harbour mouth a scheduled service operated by **Gosport Ferry Ltd**. A variety of summer cruises and party nights are also available visiting Beaulieu, Cowes and the River Hamble, see www.gosportferry.co.uk for details.

- d) There is a wide choice of excursions or tours by water available from various companies operating from both Portsmouth and Gosport sides of Portsmouth Harbour.

These range from waterbus tours of the Naval Dockyard to see the ships alongside in the home of the Royal Navy, available as hop on hop off at stopping points in **Gosport** at the **Submarine Museum** to a summer Solent cruise.

The visitor can take a **Solent & Wightline Cruises** Harbour Cruise lasting approximately 50 minutes viewing the RN ships in the dockyard and other areas of interest within Portsmouth Harbour, from their boarding pontoons at either **Gunwharf Quays** or within the **Naval Dockyard**.

For a return to the age of steam, step on board the world's last sea going paddle steamer, **Waverley**, for one of her cruises along the South of England coastline.

The **Waverley** visits Portsmouth each September, offering full day, afternoon, or evening cruises in and around the Solent & South Coast. Details can be found at www.waverleyexcursions.co.uk

Operating all year round **Hayling Ferry** run a ferry service carrying foot passengers, bicycles, wheelchairs and small motorcycles across the entrance to Langstone Harbour between **Eastney and Hayling Island** linking the citizens of Portsmouth with the beaches and the holiday resorts on Hayling Island. Details of their timetable can be found at www.haylingferry.com

- e) **Camber Quay, Old Portsmouth** is home to Portsmouth's fishing fleet – some 20 to 30 vessels landing fresh fish and shellfish in season on a daily basis. Johnson's Fish Market and Viviers UK Ltd (www.viviers-uk.com) all sell a wide variety of fresh and frozen fish and live or cooked shellfish from their fish markets on the quaysides.

In addition, **Camber Quay** has facilities for long or short term lay up of yachts and pleasure boats.

KB Boat Park operated by **Ken Brown Boats Ltd** (www.kb-boatpark.co.uk) offers a dry berth launch & recovery service for small craft; summer and winter boat storage for larger motorboats and sailing yachts, plus lift & scrub and ancillary maintenance services.

During the height of the summer some 15 to 20 pleasure craft a day also secure to the Quay walls. The sailors disembark for a visit to the fortifications, to visit one of Old Portsmouth's public houses or hotels, many with fine views over the Harbour entrance and the Solent, or to buy from a wide variety of fish from the markets situated on the quayside.

- f) Meanwhile at the North Eastern end of Portsmouth Harbour some 25,500 vessels, mostly luxury pleasure craft having travelled via the small boat channel passed through the lock (43m x 9.1m) to enter or leave the Marina at Port Solent.

Port Solent Marina (www.premiermarinas.com), operated by Premier Marinas Ltd, was officially opened by the Princess Royal on 29 July 1988.

The site covers an area of 84 acres. There are shops, restaurants, pubs, leisure facilities, as well as over 600 residential homes and flats, an 808 berth marina with chandlers, boat brokers, Portsmouth Harbour Yacht Club and other marine services.

- g) With over 500m of berth space and the capability of accommodating boats of 75 metres in length, **Gunwharf Quays** (www.gunwharf-quays.com), is available to tall ships, corporate events as well as visiting boats.

Gunwharf Quays is also home to some of the newest landmarks on Portsmouth's skyline, Spinnaker Tower and one of the South Coast's finest waterside developments with a plethora of shops and restaurants.

The **Tall Ships Youth Trust** vessel **Stavros S Niachros** is regularly based at Gunwharf Quay and further details of the calls and the cruises offered to young persons can be found on their web site www.tallships.org. In addition other tall ships call at Gunwharf Quay both to visit the city of Portsmouth and to change crews.

h) **Cruise Ship Calls**

There were 11 cruise ships calls in Portsmouth during 2010. Five of these visits were tourist calls with the remaining six being disembark / embarking calls. With over 30 calls booked for 2011 the future for Portsmouth International Port as a cruise call venue is looking bright.

Private and Commercial Wharves 2010

- a) **MMD (Shipping Services) Ltd** operating from the commercial wharves at **Flathouse Quay** and **Albert Johnson Quay**, provide full agency and stevedoring services.

Over 600,000 tonnes of fruit, salads and vegetables was imported on board the 224 ships calling at the commercial wharves in Portsmouth during 2010.

As in past years, much of the UK's imports of Moroccan citrus fruits, over 20,000 tonnes as well as about 70% of the UK's banana imports entered the country through the Port of Portsmouth.

In addition, a variety of tropical fruits and vegetables also found their way onto the UK supermarket shelves from the import facilities operated by **MMD (Shipping Services) Ltd**.

MMD (Shipping Services) Ltd was acquired by Portsmouth City Council in March 2008 and are looking forward to a period of stability and sustainable growth after many changes of ownership during the past several years.

- b) Although less than in previous years as a result of the recession, some 200,000 tonnes of sea-dredged ballast was landed by **Kendall Bros. Ltd** at their **Eastern Road Wharf** and forwarded by road to various construction sites within the UK.
- c) The established British ship owner and operator **John H Whitaker Tankers Ltd** has three modern double hulled bunker tankers servicing vessels at Portsmouth International Port on a daily basis. The 6,100 tonne **Whitonia**, the 4200 tonne **Whitchallenger** and the 2,850 tonne **Jayne W** provide all grades of fuel on a 24 hour basis on behalf of ExxonMobil. In 2010 more than 1,000 bunker operations were conducted. *e-mail - AJ@JHW-SOTON.CO.UK*
- d) **North Quay** offers additional facilities to the Port as a lay-by berth for the coastal tankers and bunker barges. **CPL Ltd** (www.cplpetroleum.co.uk) operates the small oil terminal at the eastern end of North Quay, **CPL Ltd** also supplies Marine Fuel and Oil for all marine vessels from two points within the Harbour boundaries – Camber Docks and Fountain Lake.

IMPORTS 2010

COMMODITY	ANNUAL TONNAGE	NO. OF SHIPS	PORT OF ORIGIN	AREA CODE	LOADING BERTH	AGENT/STEVEDORE
Ballast	216,891	not declared	Sea	OP	Kendalls	Kendall Bros. Ltd
	216,891	-				
Fruit	11,113	7	Belize	CA	AJQ	MMD (Shipping Services) Ltd
	5,192	4	Belize	CA	Flathouse	MMD (Shipping Services) Ltd
	48,677	13	Costa Rica	CA	AJQ	MMD (Shipping Services) Ltd
	171,243	32	Costa Rica	CA	Flathouse	MMD (Shipping Services) Ltd
	3,750	13	Agadir	NA	AJQ	MMD (Shipping Services) Ltd
	16,250	20	Agadir	NA	Flathouse	MMD (Shipping Services) Ltd
	90,436	50	Columbia	SAM	AJQ	MMD (Shipping Services) Ltd
	16,218	14	Dominican	WI	AJQ	MMD (Shipping Services) Ltd
	193,649	60	Windward Isles	WI	AJQ	MMD (Shipping Services) Ltd
	54,604	11	Windward Isles	WI	Flathouse	MMD (Shipping Services) Ltd
	611,132	224				
General inc Empies	159	13	Solent Area	CW	Camber	Ken Brown Boats Ltd
	159	13				
Steel	36	1	Solent Area	CW	Camber	Ken Brown Boats Ltd
	36	1				
Timber	46	1	Solent Area	CW	Camber	Ken Brown Boats Ltd
	46	1				
Vehicles	60	5	Solent Area	CW	Camber	Ken Brown Boats Ltd
	60	5				
TOTAL IMPORTS	828,324	244				

[Export](#)

[Index](#)

EXPORTS 2010

COMMODITY	ANNUAL TONNAGE	Ammended for DfT	NO. OF SHIPS	DESTINATION	AREA CODE	LOADING BERTH	AGENT/STEVEDORE
Building Materials	485	485	6	Solent Area	CW	Camber	Ken Brown Boats Ltd
	485	485	6				
General	838			Agadir	NA	AJQ	MMD (Shipping Services) Ltd
inc Empties	3,124			Agadir	NA	Flathouse	MMD (Shipping Services) Ltd
	1,779	1,341		Belize	CA	AJQ	MMD (Shipping Services) Ltd
	368	336		Belize	CA	Flathouse	MMD (Shipping Services) Ltd
	3,640	2,420		Costa Rica	CA	AJQ	MMD (Shipping Services) Ltd
	7,834	6,768		Costa Rica	CA	Flathouse	MMD (Shipping Services) Ltd
	5,808	1,090		Columbia	SAM	AJQ	MMD (Shipping Services) Ltd
	140		1	Le Havre	NE	Flathouse	MMD (Shipping Services) Ltd
	11	11	2	Portsmouth	CW	Camber	Ken Brown Boats Ltd
	35	35	3	Solent Area	CW	Camber	Ken Brown Boats Ltd
	6,770	5,230		Dominican	WI	AJQ	MMD (Shipping Services) Ltd
	47,746	33,290		Windward Isles	WI	AJQ	MMD (Shipping Services) Ltd
	6,016	4,942		Windward Isles	WI	Flathouse	MMD (Shipping Services) Ltd
	84,109	55,463	6				
Steel	173	173	6	Solent Area	CW	Camber	Ken Brown Boats Ltd
	173	173	6				
Timber	19	19	1	Solent Area	CW	Camber	Ken Brown Boats Ltd
	19	19	1				
Vehicles	60	60	5	Solent Area	CW	Camber	Ken Brown Boats Ltd
	60	60	5				
TOTAL EXPORTS	84,846	56,200	81				
IMPORTS	828,324		244				
OVERALL TOTAL	913,170		325				

no wt allowance for Export Empties permitted by DfT
DfT figures lower than published above

AREA CODES:

CW = Coastwise
NA = North Africa
CA = Central America
NE = Northern Europe

OP = One Port
SAM = South America
WI = West Indies

[Summary](#)

[Index](#)

SUMMARY OF IMPORTS BY COMMODITY

Excluding Unitised Traffic RO/RO Trade CFP - 2002 - 2010

COMMODITY	2002	2003	2004	2005	2006	2007	2008	2009	2010
Ballast	351,440	320,539	333,182	315,050	399,688	413,054	334,662	266,374	216,891
Building Materials									
Coal									
Empties	2,199	2,419	2,633	2,472	2,104	1,324	1,450		
Fertiliser									
Fruit	402,593	452,680	529,883	697,942	752,855	468,287	536,082	669,400	611,132
Fuel Oil	1,949								
General	3,614	2,946	1,584	2,266	5,683	9,585	5,329	196	159
Grain									
Miscellaneous									
Oil									
Potatoes									
Steel	34		75	3	7			19	36
Timber									46
Tomatoes									
Vegetables									
Vehicles	63	141	148	153	104	436	378	3	60
Total Tonnages	761,892	778,725	867,505	1,017,886	1,160,441	892,686	877,901	935,992	828,324

SUMMARY OF EXPORTS BY COMMODITY

Excluding Unitised Traffic RO/RO Trade CFP - 2002 - 2010

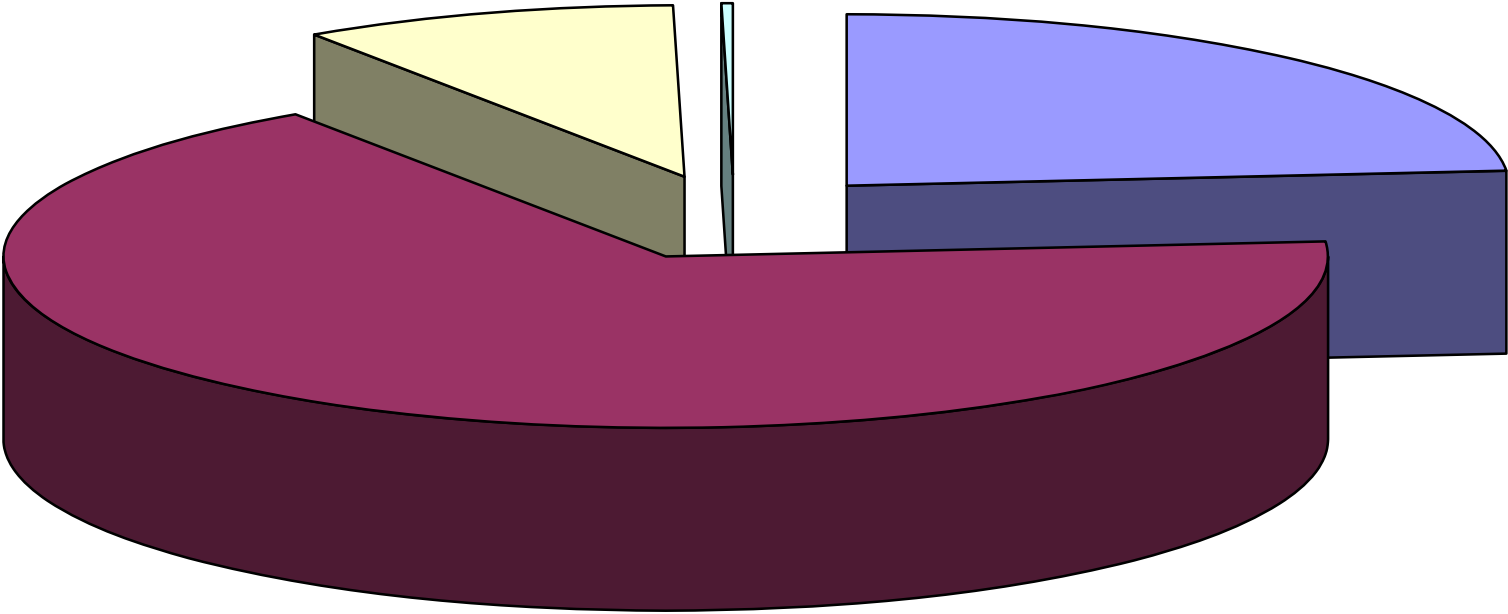
COMMODITY	2002	2003	2004	2005	2006	2007	2008	2009	2010
Ballast			272	18				93	
Building Materials	29,441	29,184	31,192	34,247	36,253	22,471	24,937	1,110	485
Coal									
Fertiliser	537	542	851	777	374	2,470	3,821		
Fuel Oil									
Fruit									
General	120,579	156,879	168,216	172,805	172,897	194,777	212,598	114,961	84,109
Grain									
Miscellaneous									
Oil									
Steel	3,764	2,934	4,054	4,108	4,227	2,334	2,773	243	173
Timber	9,465	11,014	10,404	12,117	9,648	8,824	10,046	17	19
Vehicles		27			31			22	60
Total Tonnages	163,786	200,580	214,989	224,072	223,430	230,876	254,175	116,446	84,846

Total Commodities	925,678	979,305	1,082,494	1,241,958	1,383,871	1,123,562	1,132,076	1,052,438	913,170
--------------------------	----------------	----------------	------------------	------------------	------------------	------------------	------------------	------------------	----------------

Foreign

Index

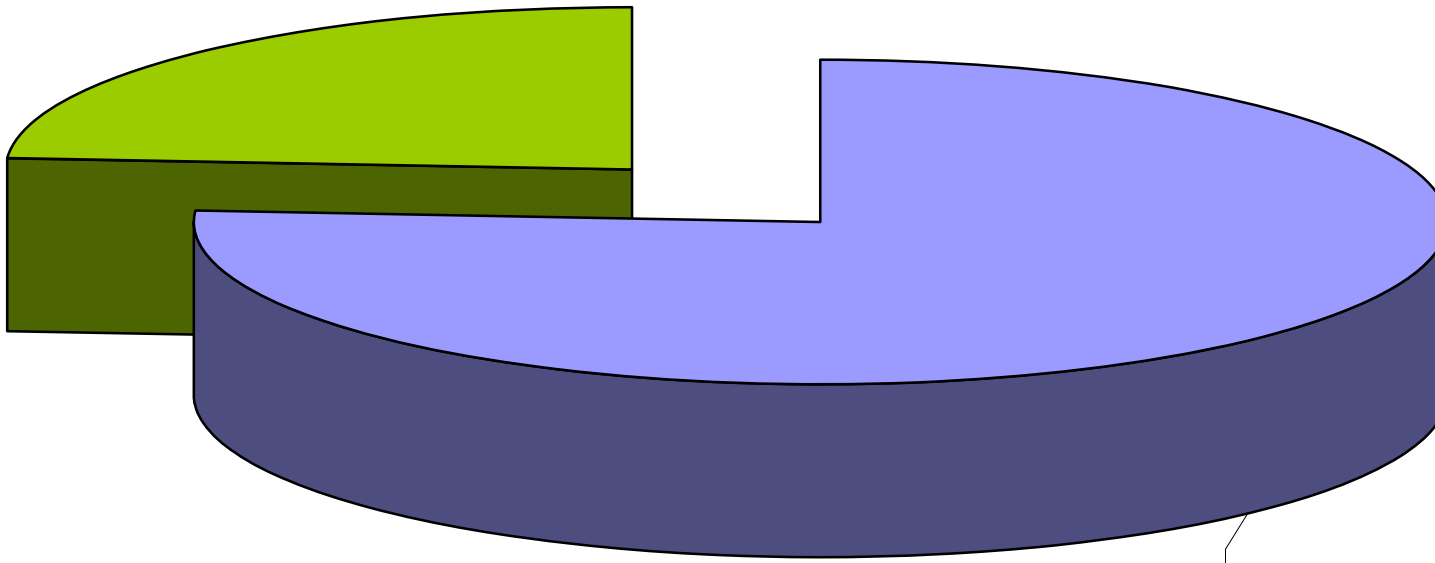
Commodity Totals 2010



■ Ballast ■ Fruit ■ General ■ Misc other goods

Principal Trading Areas 2010

Coastwise
24%



Foreign
76%

FOREIGN TONNAGES 2005 - 2010
Excluding Unitised Traffic RO/RO Trade CFP

2005

AREA	IMPORT	EXPORT	TOTAL	%
North Africa	46,493	136	46,629	5.8%
South Africa	135,302	2,656	137,958	17.2%
New Zealand	7,150	331	7,481	0.9%
North Europe		171	171	0.0%
West Indies	245,412	89,134	334,546	41.8%
Mediterranean			0	0.0%
Cent & Sth America	263,585	10,581	274,166	34.2%
Total	697,942	103,009	800,951	100%

2006

IMPORT	EXPORT	TOTAL	%
45,902	4,721	50,623	5.9%
129,137	2,175	131,312	15.2%
4,037	339	4,376	0.5%
		0	0.0%
367,937	91,306	459,243	53.2%
		0	0.0%
207,996	9,638	217,634	25.2%
755,009	108,179	863,188	100%

2007

AREA	IMPORT	EXPORT	TOTAL	%
North Africa	31,599	26,446	58,045	9.7%
West Africa	12,013	370	12,383	2.1%
New Zealand	5,605	690	6,295	1.1%
North Europe		868	868	0.1%
West Indies	316,334	87,482	403,816	67.5%
Mediterranean			0	0.0%
Cent & Sth America	108,972	8,241	117,213	19.6%
Total	474,523	124,097	598,620	100%

2008

IMPORT	EXPORT	TOTAL	%
36,501	44,067	80,568	12.0%
		-	0.0%
		-	0.0%
		-	0.0%
223,852	65,954	289,806	43.1%
		-	0.0%
277,319	24,293	301,612	44.9%
537,672	134,314	671,986	100%

2009

AREA	IMPORT	EXPORT	TOTAL	%
North Africa	33,641	19,246	52,887	6.7%
West Africa			-	0.0%
New Zealand			-	0.0%
North Europe	90		90	0.0%
West Indies	261,478	70,543	332,021	42.3%
Mediterranean			-	0.0%
Cent & Sth America	374,281	25,095	399,376	50.9%
Total	669,490	114,884	784,374	100%

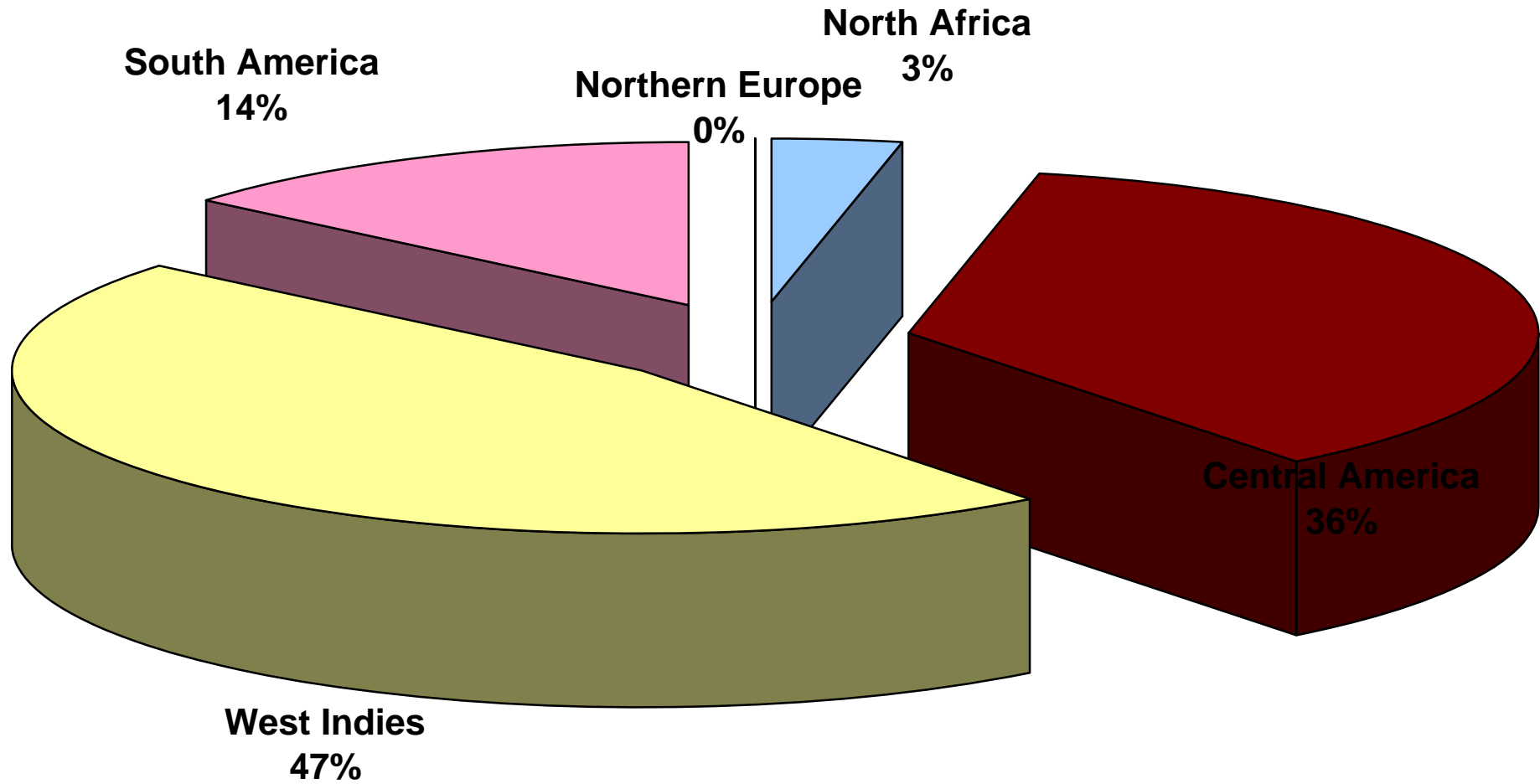
2010

IMPORT	EXPORT	TOTAL	%
20,000	3,962	23,962	3.4%
		-	0.0%
		-	0.0%
	140	140	0.0%
264,471	60,532	325,003	46.7%
		-	0.0%
326,661	19,429	346,090	49.8%
611,132	84,063	695,195	100%

Coastwise

Index

Foreign Tonnage 2010



COASTWISE TONNAGES

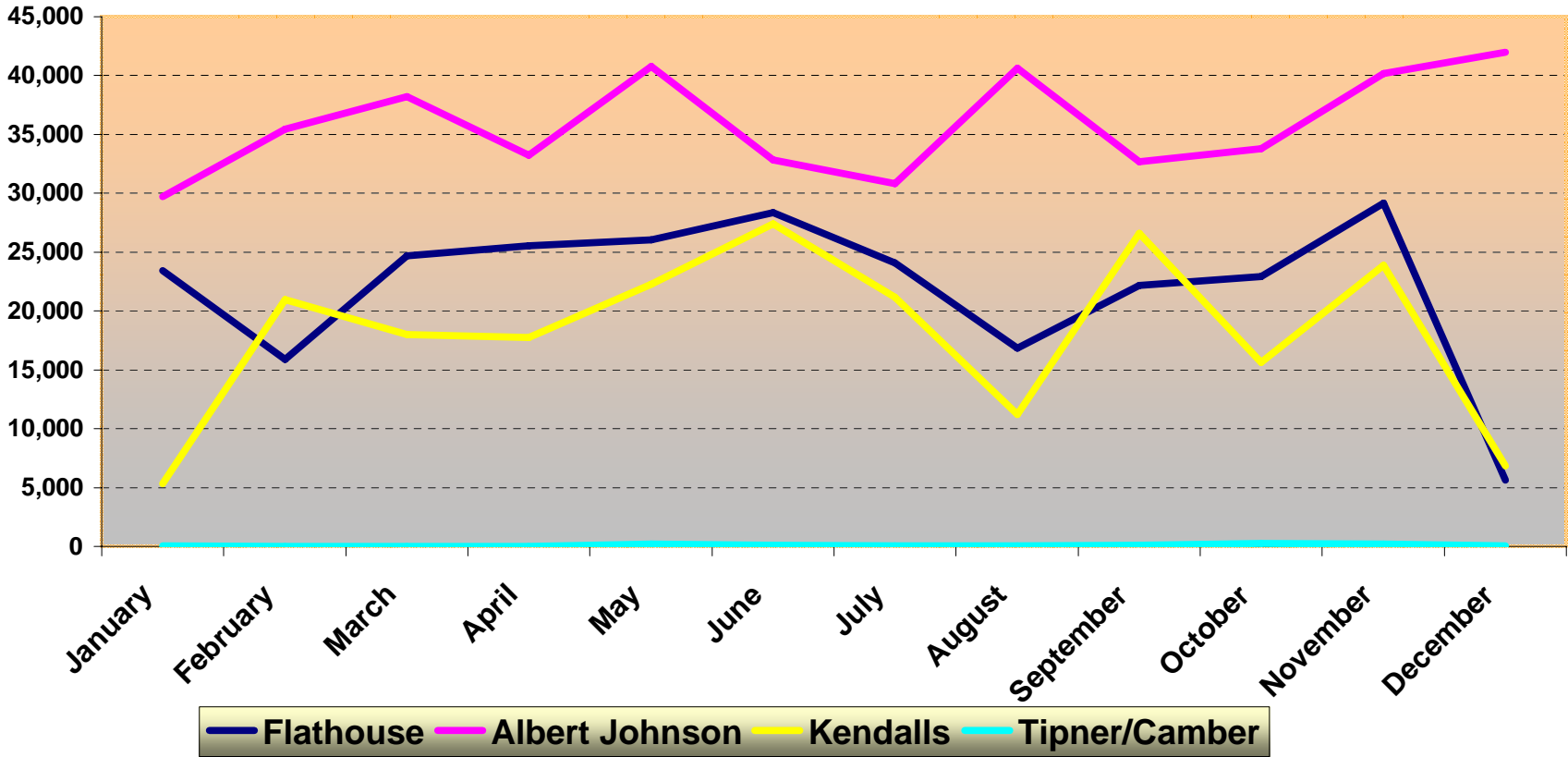
Excluding Unitised Traffic RO/RO Trade CFP

2010

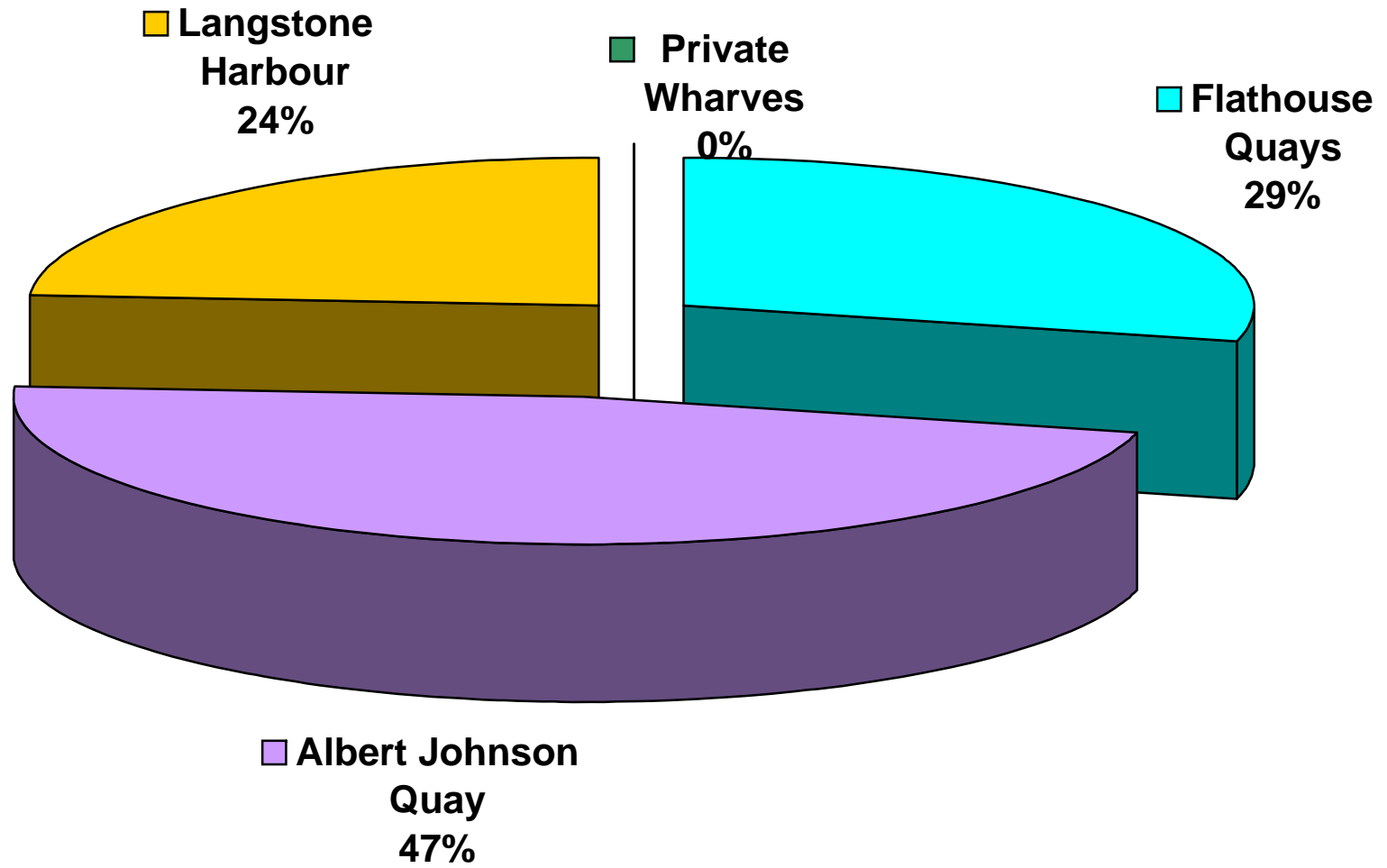
AREA	IMPORTS	EXPORTS	TOTALS	%
Sea	216,891		216,891	99.5%
UK	301	783	1,084	0.5%
Total Tonnages	217,192	783	217,975	100%

Index

Monthly Tonnages 2010



Docks Tonnages 2010



SUMMARY OF TOTAL TONNAGES BY QUAY 2003 - 2010

Excluding Unitised RO/RO Trade - CFP

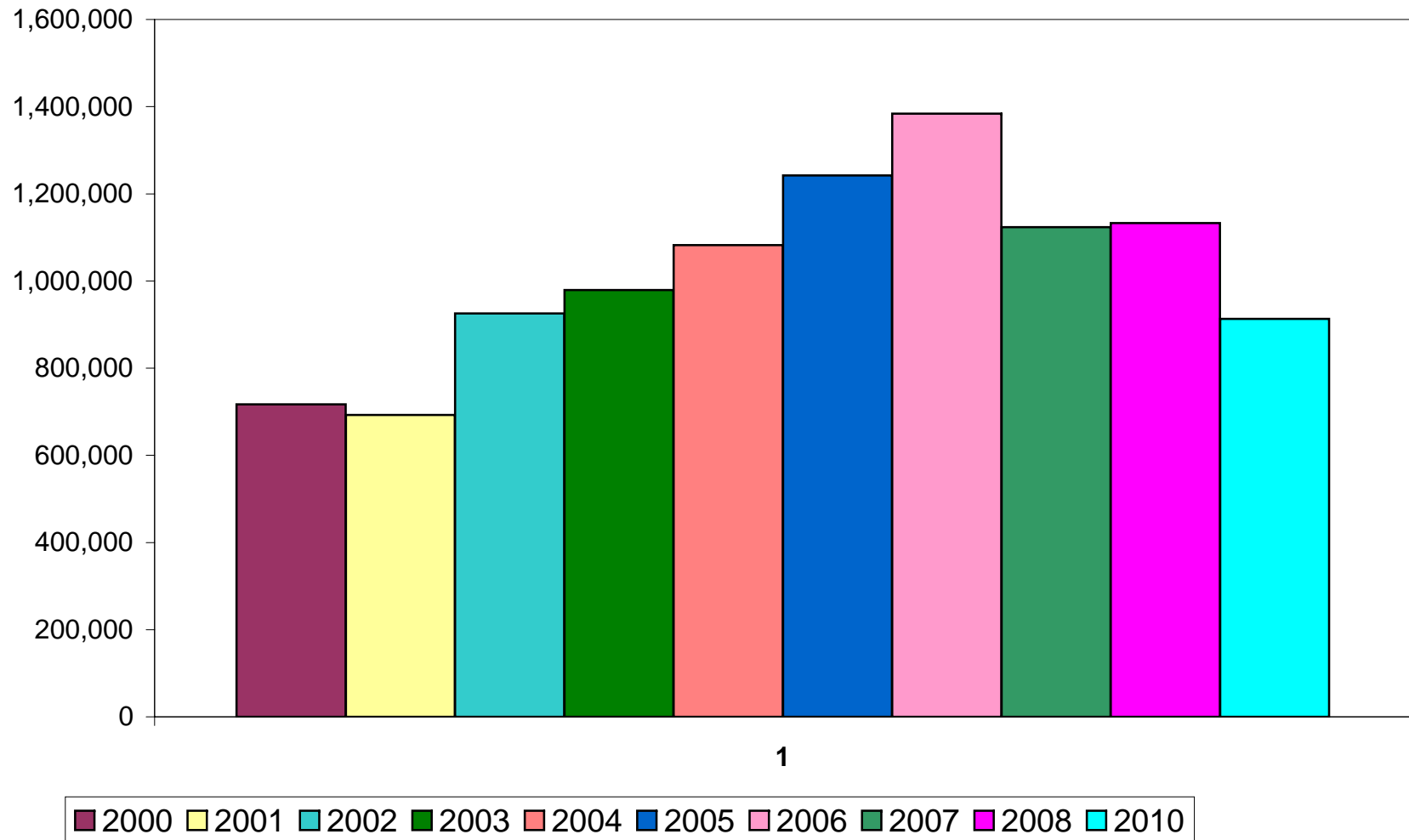
Dock	2003	%	2004	%	2005	%	2006	%	2007	%	2008	%	2009	%	2010	%
Flathouse	229,891	23.5%	227,184	21.0%	290,403	23.4%	287,870	20.8%	265,421	23.6%	206,076	18.2%	279,349	26.5%	264,771	29.0%
Albert Johnson Quay	428,831	43.8%	521,300	48.2%	636,453	51.2%	696,203	50.3%	446,481	39.7%	591,281	52.2%	505,003	48.0%	430,424	47.1%
Private Wharves inc																
Camber	33,902	3.5%	29,516	2.7%	47,256	3.8%	57,004	4.1%	60,614	5.4%	57,645	5.1%	10,696	1.0%	1,084	0.1%
Langstone	286,681	29.3%	304,494	28.1%	267,846	21.6%	342,794	24.8%	352,440	31.3%	277,074	24.5%	257,365	24.5%	216,891	23.8%
Total	979,305	100%	1,082,494	100%	1,241,958	100%	1,383,871	100%	1,124,956	100%	1,132,076	100%	1,052,413	100%	913,170	100%

Distribution	2003	%	2004	%	2005	%	2006	%	2007	%	2008	%	2009	%	2010	%
Foreign	542,052	50.1%	626,779	50.5%	800,951	60.5%	863,188	76.8%	598,620	53.3%	598,620	53.3%	784,374	74.5%	695,195	76.1%
Coastwise	320,583	29.6%	334,045	26.9%	315,102	23.8%	339,798	30.2%	413,054	36.8%	413,054	36.8%	268,064	25.5%	217,975	23.9%
Channel Islands	116,670	10.8%	121,670	9.8%	125,905	9.5%	120,885	10.8%	111,888	10.0%	111,888	10.0%	0	0.0%	0	0.0%
Total	979,305	90%	1,082,494	87%	1,241,958	94%	1,323,871	118%	1,123,562	100%	1,123,562	100%	1,052,438	100%	913,170	100%

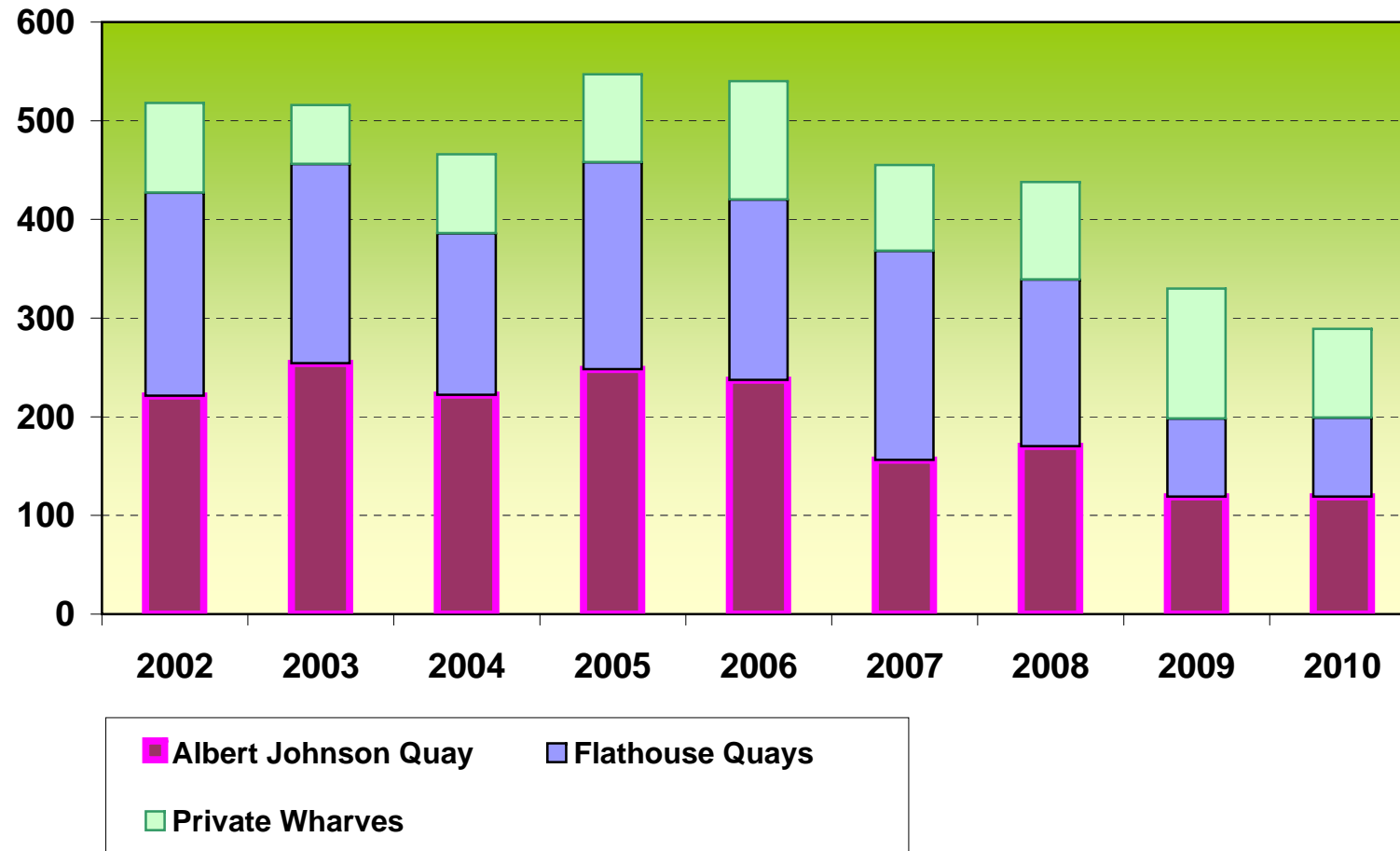
Roll on/Roll Off

Index

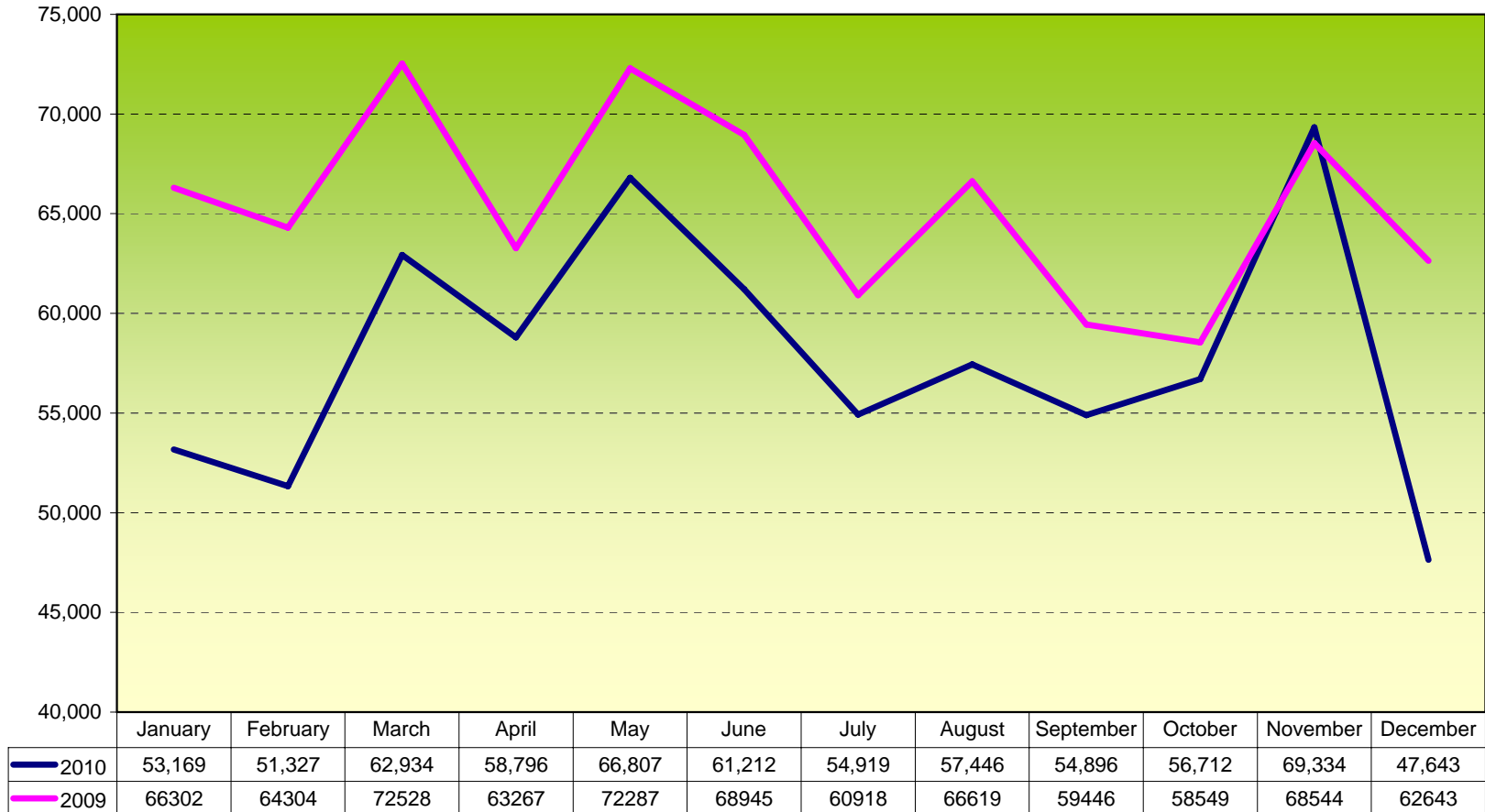
Tonnage Trends 2000-2010



Commercial Shipping Movements



Cargo Landed AJQ/Flathouse 2009 - 2010



Portsmouth International Port

Portsmouth International Port, situated at the end of the M275, was opened in June 1976. Initially providing two cross channel companies with an operating area of approximately 4 acres of land reclaimed from Portsmouth Harbour and a single linkspan from which a summer only passenger service to Cherbourg and St Malo was planned. However, before the year was out an all year round freight service commenced in addition to the passenger services.

Towards the end of 1977, a second linkspan was installed, providing a third shipping company with the facility to operate a daily passenger/freight service to the Channel Islands (both Jersey and Guernsey).

Additional reclamation of land from the Harbour and the purchase of land to the land ward side of the Ferry Port enabled the City Council to keep abreast of the increase in demand and the site currently occupies some 17.6 hectares (44 acres). With the opening of a new exit in July 1998, egress from the Port for most car drivers is directly onto the M275.

During the latter half of 2009 the ground works commenced for a prestigious new passenger terminal building to be ready for Easter 2011.

Construction of the new terminal building commenced on 11 January 2010 and it is scheduled to be complete late March 2011.



The building covers approximately 2,700 square metres and has a modern glass and stone façade. A brise soleil provides shade to the southern face of the building.

Inside there is a full height concourse containing check-in desks and the arrival/departure area. On a mezzanine floor at the western end of the building is the bar/café, with views over the concourse and an observation balcony overlooking the Port.

The building includes a number of innovative environmentally friendly features. There are windcatchers on the roof which provide ventilation to minimise the need for air conditioning in the summer, and a heat pump which uses the warmth of the sea to provide heating in the winter. Sea water is also being used to flush the toilets, drastically reducing the water consumption of the building.

In addition to the building, new drop-off areas and roads are being constructed to improve access to and from the terminal building.

Visitor and long term parking with the capacity for 516 cars is provided in a multi-storey car park operated by **APCOA**.

Arranged over five floors, there is a dedicated space for motorcycles and an electronic car service to transport disabled passengers to and from the Terminal Building.

In May 2010, Navigate were appointed by Portsmouth Port to drive all of the marketing, branding and PR for the business with a three year contract.

In January 2011, Navigate launched a new name and new brand for the Port, changing it from Portsmouth Continental Ferry Port to Portsmouth International Port, to reflect the increasing importance that Portsmouth is playing in the international shipping stage.

Much of Navigate's focus has been on the development of key relationships with the Port's partners including ferry and cruise operators, local authorities, industry professionals and the destinations themselves in order to make the most of all opportunities of promoting and raising awareness of the Port.

For more information contact Navigate on 01730 235666 or email Portsmouth@navigate-design.com

Condor Ferries (www.condorferries.co.uk) operates a daily conventional ferry service (excluding Sundays) between Portsmouth and the Channel Islands of Jersey and Guernsey.

During the summer the conventional ferry, **Commodore Clipper**, operates from Portsmouth to Cherbourg every Sunday from May to September. With space for up to 300 passengers and 100 cars, **Commodore Clipper** features a café style restaurant, Club Class lounge with reclining seats or the comfort and privacy of an en-suite cabin.

Each year Condor Ferries carries more than 1 million passengers and 200,000 passenger vehicles between the UK, Channel Islands and France.

Condor Ferries also operates **Commodore Goodwill**, as a freight only vessel. The Condor Ferries fleet carries 100,000 freight vehicles into the Channel Islands each year as well as exporting tonnes of local produce

Brittany Ferries (www.brittanyferries.com) accounted for over 70% of traffic in the Western Channel and is a leading supplier of ferry-inclusive motoring holidays to France and Spain.

Up to three daily return sailings are operated between Portsmouth and Caen by the **Mont St Michel** (with capacity for 2,200 passengers and 800 cars) and **Normandie** (2,120 passengers, 600 cars). The crossing time is 6 hours.

The Portsmouth – St Malo route is served by the ever-popular **Bretagne** (2,056 passengers, 580 cars) with a daily overnight sailing from Portsmouth and a daytime return sailing from St Malo. The crossing takes 8¾ hours.

From April until November, the high speed ferry, **Normandie Express** (850 passengers, 235 cars) offers a daily return sailing between Portsmouth and Cherbourg, with a crossing time of just three hours, as well as an additional departure from Portsmouth to Caen on Fridays, Saturdays and Sundays.

A new service from Portsmouth to Bilbao commences on 27 March 2011 operated by Brittany Ferries latest cruise ferry, the **Cap Finisterre** (990 passengers 500 cars) This twice weekly service is complimented by the existing service to Santander operated by Brittany Ferries' luxurious flagship, the **Pont Aven**, (2,400 passengers, 650 cars) with a crossing time of just 24 hours as well as once a week by the **Cap Finisterre**.

P&O Ferries (www.poferries.com) sailed from **Portsmouth** to **Bilbao**, in Spain's Basque country with the cruise ferry **Pride of Bilbao** until September 2010.

LD Lines (www.ldlines.co.uk) is a subsidiary of the French owner **LDA (Louis Dreyfus Armateurs)**. They operate a daily service on the Le Havre to Portsmouth route, with additional summer sailings by a new fast-craft service.

Passenger Terminal Building and Travel Centre

Within Portsmouth International Port's buildings a range of services are available to the traveller from 6am until midnight.

Travelex UK Ltd (www.travelex.co.uk) operates the foreign exchange bureau located in the main passenger terminal. Their friendly sales team can provide you with Euro currency together with Euro, US\$ or sterling travellers cheques, and prepaid Mastercard cash passports.

Although best known for its bureaux de change in many tourist locations, **Travelex UK Ltd** can also offer a wide range of travel and financial products, mobile phone top up vouchers, travel insurance and International Phone cards to name but a few of those available at Portsmouth.

A bank Automated Telling Machine for convenient cash withdrawal in either sterling or Euros is located adjacent to the Bureau.

A wide range of retail and catering facilities within the Continental Ferry Port were provided during 2010 by **Aramark Ltd** (www.aramark.co.uk) Travellers could choose from "grab and go" shops or enjoy a relaxed meal in the restaurant or bar areas. From 1 April 2011 these services will be provided in the new terminal building by **Compass Group plc**.

Meanwhile their retail shops stocked a wide range of magazines and books, gifts and confectionery and health and beauty items.

Over at the **Travel Centre**, situated at the end of the vehicle collecting lanes additional services are provided for the visitor to Portsmouth Ferry Port.

European Motoring Ltd provided all the necessary motoring accessories to ensure that motorists are safe and legal, meeting all the EEC Motoring Regulations, whilst travelling on the continent.

Also within the Travel Centre, **InterCash Bureau de Change Ltd** (www.intercashuk.com) served an average of 40,000 customers annually since it opened at the Port in 1994.

Adrenalin Advertising Ltd (email: info@[adrenalinadvertising.com](mailto:info@adrenalinadvertising.com)) maintains and markets over 30 illuminated static display panels of varying sizes throughout the port and terminal buildings. These advertising sites can be purchased for periods from 2 weeks upwards to display adverts to an audience of over 2.5m commercial and leisure travellers.

ROLL ON/ROLL OFF AND OTHER FERRY SERVICES

2002 - 2010

Isle of Wight Car Ferry

	2002	2003	2004	2005	2006	2007	2008	2009	2010
Vehicle Units	986,030	1,001,188	1,001,874	1,046,635	992,973	996,329	761,259	971,260	948,572
Passengers	2,784,898	2,796,666	2,812,393	2,760,669	2,628,510	2,551,030	2,028,295	2,495,971	2,446,901
Total	3,770,928	3,797,854	3,814,267	3,807,304	3,621,483	3,547,359	2,789,554	3,467,231	3,395,473

Isle of Wight Passenger Ferry

	2002	2003	2004	2005	2006	2007	2008	2009	2010
Passengers	1,454,647	1,471,246	1,461,733	1,459,763	1,433,319	1,345,541	1,141,117	1,357,782	1,378,370
Total	1,454,647	1,471,246	1,461,733	1,459,763	1,433,319	1,345,541	1,141,117	1,357,782	1,378,370

Isle of Wight Hovercraft Service

	2002	2003	2004	2005	2006	2007	2008	2009	2010
Passengers	703,117	765,032	763,691	756,579	779,528	795,776	803,795	849,150	
Total	703,117	765,032	763,691	756,579	779,528	795,776	803,795	849,150	0

Gosport Ferry Passenger Service

	2002	2003	2004	2005	2006	2007	2008	2009	2010
Passengers	3,431,716	3,717,202	3,860,593	3,747,533	3,597,817	3,643,429	3,666,119	3,534,248	3,392,471
Total	3,431,716	3,717,202	3,860,593	3,747,533	3,597,817	3,643,429	3,666,119	3,534,248	3,392,471

Continental and Channel Island Services

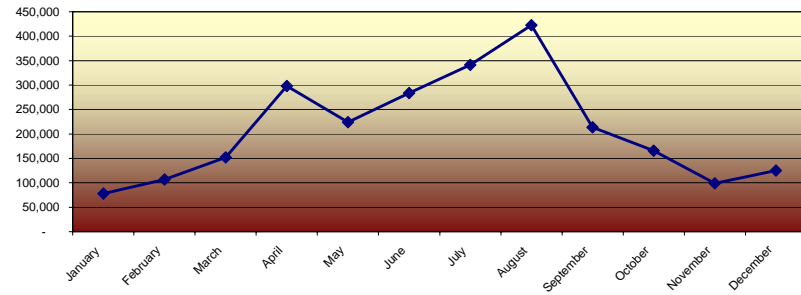
	2002	2003	2004	2005	2006	2007	2008	2009	2010
Vehicle Units	1,018,551	931,876	915,009	790,237	663,058	648,064	654,685	687,093	692,848
Freight Units	313,429	319,553	307,994	283,735	269,317	268,523	263,620	264,446	256,842
Passengers inc cruise	3,481,537	3,190,446	3,154,421	2,711,126	2,226,253	2,163,111	2,160,208	2,225,377	2,288,363
Total	4,813,517	4,441,875	4,377,424	3,785,098	3,158,628	3,079,698	3,078,513	3,176,916	3,238,053

Shipping by Quay

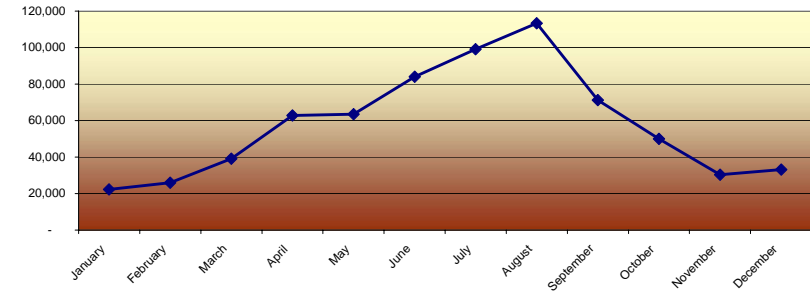
Index

Monthly Throughput Traffic at Continental Ferry Port, Portsmouth 2010

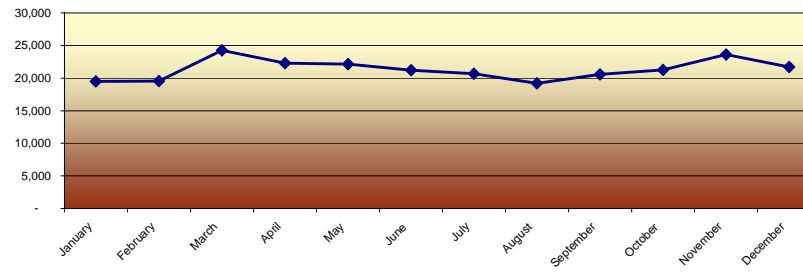
Passengers 2010



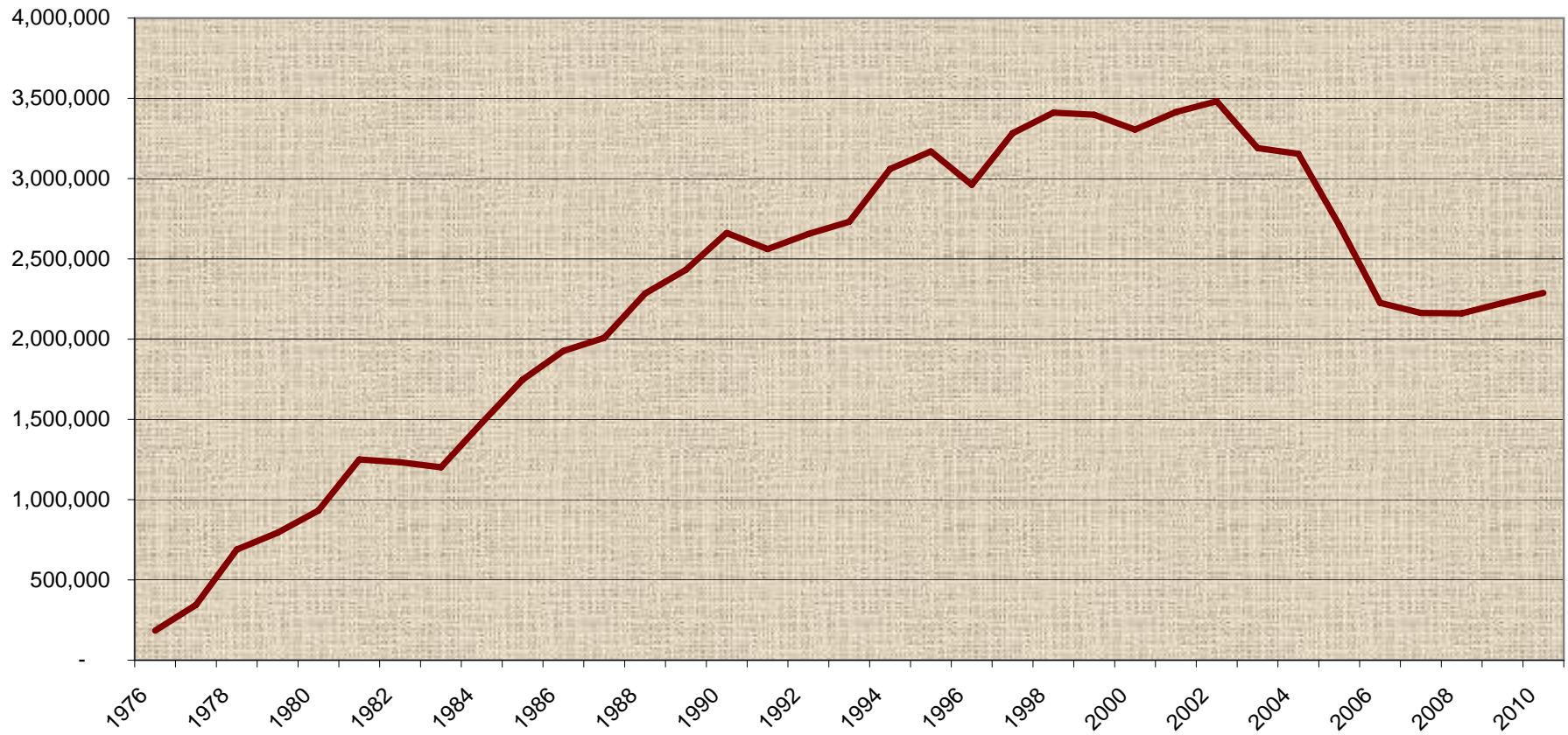
Passenger Vehicles 2010



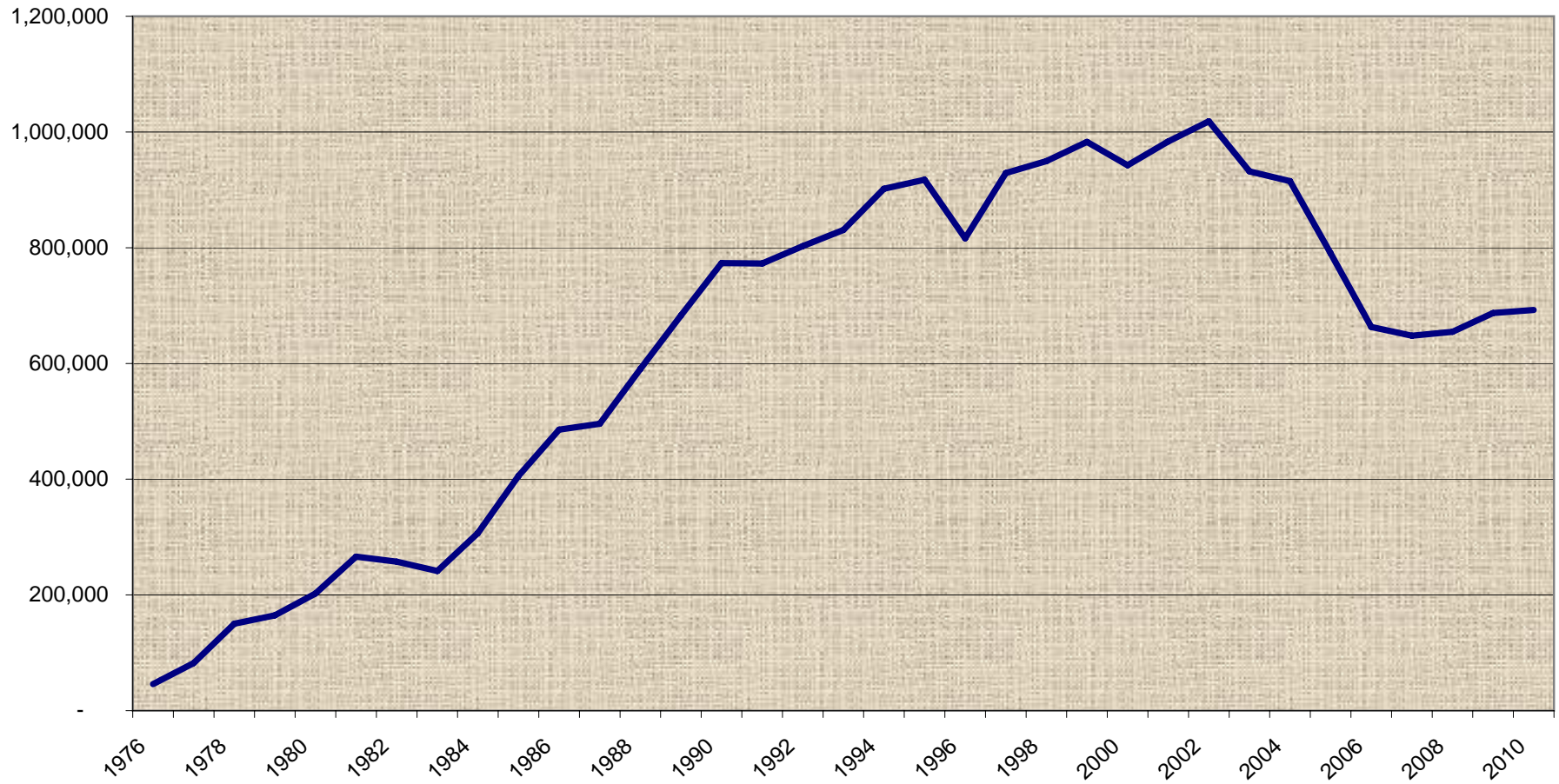
Freight Units 2010



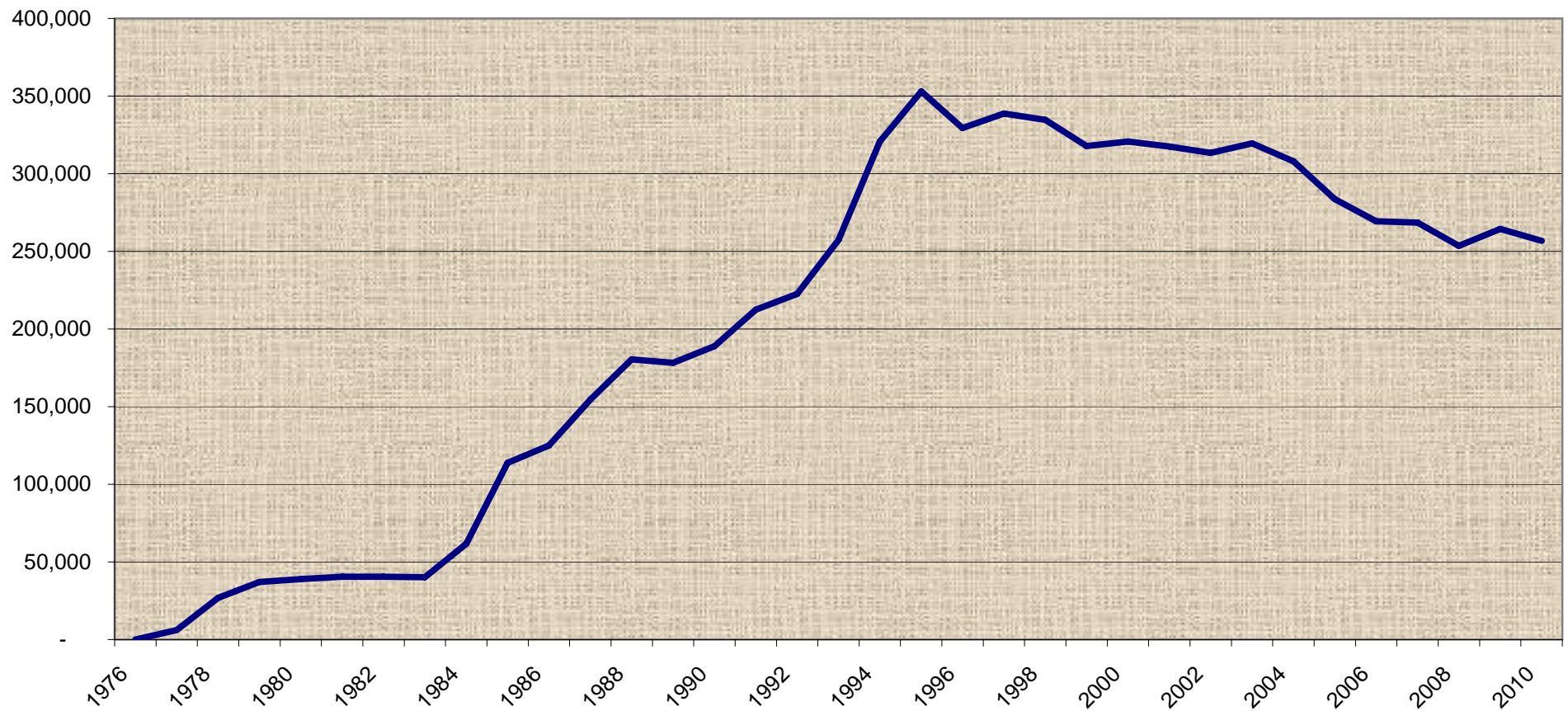
Passenger Throughput Continental Ferry Port 1976 to 2010



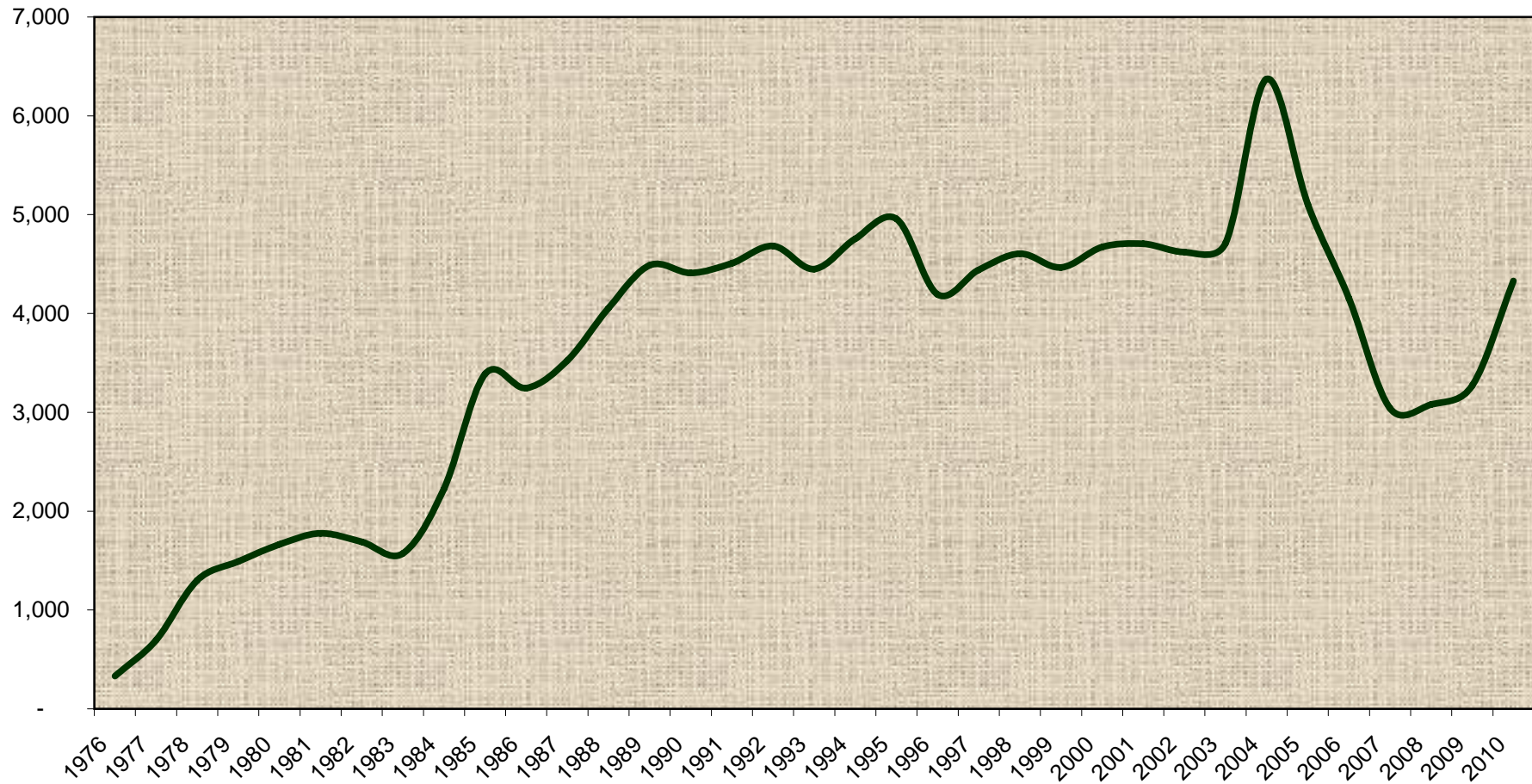
Passenger Vehicles throughput Continental Ferry Port 1976 to 2010



Freight Vehicles throughput Continental Ferry Port 1976 to 2010



Shipping Movements Continental Ferry Port 1976 to 2010



SHIPPING ARRIVALS

2002 - 2010

Dock	2002	2003	2004	2005	2006	2007	2008	2009	2010
Flathouse	240	231	266	209	183	212	169	78	78
Albert Johnson Quay	299	316	463	248	237	156	170	118	119
Private Wharves	161	139	113	89	120	87	103	84	59
I O W Car Ferry	12,449	12,523	12,472	12,336	11,207	11,255	11,547	16,822	10,819
I O W Passenger Ferry	11,432	11,590	11,659	11,602	11,563	11,773	11,789	10,263	11,113
Hovertravel	9,511	9,793	9,734	9,640	10,387	9,750	9,750	9,750	9,750
Gosport Ferry	34,744	34,744	34,744	34,744	34,744	36,400	36,400	36,400	35,000
Water Taxi (seasonal)		80	86	82					
Portsmouth International Port	4,623	4,711	6,373	5,102	4,155	3,041	3,080	3,272	4,329
Total	73,459	74,127	75,910	74,052	72,596	72,674	73,008	76,787	71,267

Index