

Portsmouth Commercial Port Port Statistics 2008



A service of
Portsmouth
CITY COUNCIL 

www.portsmouth-port.co.uk

PORTSMOUTH COMMERCIAL PORT

PORT STATISTICS 2008

Portsmouth Commercial Port

About Portsmouth Harbour
Local Ferry Services and Cruise Facilities
Private and Commercial Wharves

Commodities

Imports 2008
Exports 2008
Summary of Imports and Exports by Commodity 2000 - 2008
Graph of Commodity Totals
Graph of Principal Trading Areas
Foreign Tonnage 2003 - 2008
Graph of Foreign Tonnage 2008
Coastwise Tonnage 2008
Channel Island Tonnage 2008
Graph of Monthly Tonnage 2008
Graph of Docks Tonnage by Quay 2008
Summary of Tonnage by Quay 1996 – 2008
Annual Trends - Tonnage 1999 – 2008
Annual Trends - Commercial Shipping 2000 - 2008
Comparison of Cargo Landed at Commercial Wharves 2007 –2008

Continental Ferry Port

Continental Ferry Port
Passenger Terminal Building and Travel Centre
Roll on/Roll off and other Ferry Services
Graphs of Monthly Throughput: -
 Passengers 2008
 Vehicles 2008
 Freight 2008
Graphs of Annual Growth 1976-2008
 Passengers / Vehicles / Freight / Shipping
Shipping Movements 1997 -2008

Portsmouth Commercial Port

About Portsmouth Harbour

Portsmouth Harbour is known the world over as a Naval Port and home and maintenance base for the Royal Navy. The Royal Dockyard had its beginnings as long ago as the 13th Century.

The Commercial Port is in the ownership of Portsmouth City Council and is controlled by the Executive Member for Planning, Regeneration, and Economic Development.

In 1839 an Act of Parliament sanctioned the then City Council to carry out construction for the betterment of the Port, which in those days meant the Quays at Camber Docks. It also authorised servants of the Council to collect Harbour Dues on ships using the Port and additional dues for all cargo passing over the quays.

Since those early days further Acts have been obtained to authorise the expansion of the Port, the building of new quays, modernisation of existing facilities and to construct the Continental Ferry Port.

The Continental Ferry Port, Commercial Quays and the local ferry companies continue to invest in new vessels and site development in response to the demand.

The number of Royal Navy ships now based in Portsmouth has decreased but the facilities within the Naval Dockyard are once again being used to build and repair boats, not only for the Royal Navy but also Foreign Navies and commercial ventures.

Tall Ships, Ocean Racers and Global Challenge vessels have all made Portsmouth the start or finish of their sea going adventure, with their crews enjoying leisure ashore, in the numerous waterside bars, restaurants and shopping areas to choose from.

The waters in and around Portsmouth Harbour are rarely quiet. As well as the Royal Navy, local ferries and traffic to the commercial quays and Continental Ferry Port, Portsmouth Harbour also provides a safe haven for a large number of yachts and other small craft within the growing number of marinas and safe mooring areas.

Local Ferry Services and Cruise Facilities

- a) **Wightlink, Isle of Wight Ferries** (www.wightlink.co.uk) provides Portsmouth's only car and passenger service to the Isle of Wight from a roll-on/roll-off berth at Gunwharf Terminal.

Four vehicle ferries service the **Portsmouth** to **Fishbourne** route, which carries the bulk of **Wightlink's** freight traffic as well as leisure traffic. The route is especially suited to the shipment of abnormal loads as the vessels have double width ramps and can accommodate extra long or heavy loads, subject to sufficient spread of weight. High vehicles can also be accommodated with prior notification. All terminals have tide-following linkspans connecting shore with ship for easy loading.

Wightlink's foot passenger catamaran service operates between **Portsmouth Harbour Station** and **Ryde Pier Head** and has direct rail connections on either side. Trains from London, Wales and the West Country, as well as local South Coast towns all deliver passengers direct to Portsmouth Harbour Station.

The service operates from the early hours of the morning until after midnight. For most of the day a frequent service is offered every half-hour, and the Island is just under 20 minutes away on this catamaran route.

- b) Operating from the Hoverport on the seafront at **Southsea**, **Hovertravel Ltd** (www.hovertravel.co.uk) has run their regular passenger only hovercraft service to **Ryde** since 1965.

With an average crossing time of just 10 minutes and departures every 30 minutes for most of the day, rising to every 15 minutes during peak times during the summer season, **Hovertravel** provide a "Frequent and Fast" service.

Hovertravel also provides a connecting bus service to **The Hard Interchange**, **Portsmouth City Centre** and **Portsmouth & Southsea** railway station. The bus meets most hovercraft arrivals, and return journeys are timed to connect with departures to **Ryde**.

- c) With almost 100 crossings every day, over three and a half million passengers in 2008 took the route from **Gosport**, commuting to work, or for shopping and pleasure trips to **Portsmouth** proving it really is "**Shorter by Water**". Taking a sea trip of approximately 4 minutes across the Harbour mouth a scheduled service operated by **Gosport Ferry Ltd**.
- d) There is a wide choice of excursions or tours by water available from various companies operating from both Portsmouth and Gosport sides of Portsmouth Harbour.

These range from a waterbus tour of the Naval Dockyard to see the ships alongside in the home of the Royal Navy, with a drop off stop in **Gosport** at the **Submarine Museum** to a summer Solent cruise on board the **Spirit of Portsmouth**.

The visitor can take a **Solent & Wightline Cruises** Harbour Cruise lasting approximately 40 minutes viewing the RN ships in the dockyard and other areas of interest within Portsmouth Harbour, from their boarding pontoons at either **Gunwharf Quays** or within the **Naval Dockyard**.

During the summer visitors can take a trip out to one of the Forts, built in Victorian times in the Solent to protect Portsmouth Harbour, for Sunday lunch and a tour, or an evening meal and disco.

Or for a return to the age of steam, step on board the world's last sea going paddle steamer, **Waverley**, for one of her cruises along the South of England coastline.

The **Waverley** visits Portsmouth each September, offering full day, afternoon, or evening cruises in and around the Solent & South Coast. Details can be found at www.waverleyexcursions.co.uk

- e) Operating all year round **Hayling Ferry** run a ferry service carrying foot passengers, bicycles, wheelchairs and small motorcycles across the entrance to Langstone Harbour between **Eastney and Hayling Island** linking the citizens of Portsmouth with the beaches and the holiday resorts on Hayling Island.
- f) **Camber Quay, Old Portsmouth** is home to Portsmouth's fishing fleet – some 30 to 40 vessels landing fresh fish and shellfish in season on a daily basis. Johnson's Fish Market, Grantham's fish stall and Viviers UK Ltd (www.viviers-uk.com) all sell a wide variety of fresh and frozen fish and live or cooked shellfish from their fish markets on the quaysides.

In addition, **Camber Quay** has facilities for long or short term lay up of yachts and pleasure boats.

KB Boat Park operated by **Ken Brown Boats Ltd** (www.kb-boatpark.co.uk) offers a dry berth launch & recovery service for small craft; summer and winter boat storage for larger motorboats and sailing yachts, plus lift & scrub and ancillary maintenance services.

During the height of the summer some 15 to 20 pleasure craft a day also secure to the Quay walls. The sailors disembark for a visit to the fortifications, to visit one of Old Portsmouth's public houses or hotels, many with fine views over the Harbour entrance and the Solent, or to buy from a wide variety of fish from the markets situated on the quayside.

- g) Meanwhile at the North Eastern end of Portsmouth Harbour some 25,500 vessels, mostly luxury pleasure craft having travelled via the small boat channel passed through the lock (43m x 9.1m) to enter or leave the Marina at Port Solent.

Port Solent Marina (www.premiermarinas.com), operated by Premier Marinas Ltd, was officially opened by the Princess Royal on 29 July 1988.

The site covers an area of 84 acres. There are shops, restaurants, pubs, leisure facilities, as well as over 600 residential homes and flats, an 808 berth marina with chandlers, boat brokers, Portsmouth Harbour Yacht Club and other marine services.

- h) With over 500m of berth space and the capability of accommodating boats of 75 metres in length, **Gunwharf Quays** (www.gunwharf-quays.com), is available to tall ships, corporate events as well as visiting boats.

Gunwharf Quays is also home to the newest landmark on Portsmouth's skyline, Spinnaker Tower and one of the South Coast's finest waterside developments with a plethora of shops and restaurants.

The **Tall Ships Youth Trust** vessels *Prince William* and *Stavros S Niachros* are regularly based at Gunwharf Quay and further details of their calls and the cruises offered to young persons can be found on their web site www.tallships.org

- i) During 2008 the Commercial Port had 12 cruise ship calls.

These calls reflect the growing trend of smaller cruise vessels with a more discerning passenger wishing to explore Northern Europe's culture and sites.

- j) Cruise Ship calls

There were 8 cruise ships making 11 calls in Portsmouth during 2008. Three of these visits were tourist calls with the remaining eight being disembark / embarking calls.

Cruise calls have risen significantly for 2009 with bookings for 13 cruise ships making 24 calls, 5 of which are tourist and the remaining 19 disembark / embarking calls.

This change in numbers reflects **Fred Olsen Cruise Lines** commitment to Portsmouth by providing 8 calls by the 206metre cruise ship *Boudicca*. These cruises will start and finish in Portsmouth and extend our season, which normally concludes in September, through October 2009 to January 2010.

Boudicca will also be the largest ship that Portsmouth Commercial Port has "turned round", with an anticipated average number of 750 passengers leaving and joining each way.

Private and Commercial Wharves 2008

- a) **MMD (Shipping Services) Ltd** operating from the commercial wharves at **Flathouse Quay** and **Albert Johnson Quay**, provide full agency and stevedoring services.

Almost 500,000 tonnes of fruit was imported on board 223 ships, via the commercial wharves at Portsmouth during 2008.

During 2008 much of the UK's imports of Moroccan citrus fruits, nearly 30,000 tonnes entered the country through the Port of Portsmouth as well as 70% of all of the UK's bananas

MMD (Shipping Services) Ltd was acquired by Portsmouth City Council in March 2008 and are looking forward to a period of stability and sustainable growth after many changes of ownership during the past several years.

- b) **Tipner Wharf** operated by Lafarge Aggregates Ltd (www.lafarge.com) processed some 60,000 tonnes of sea dredged ballast landed by **Northwood (Fareham) Ltd** (www.westminsterdredging.co.uk) who also landed a further 25,000 tonnes at their own **Upper Wharf** in **Fareham**.
- c) In addition to this, over 350,000 tonnes of sea-dredged ballast was landed by **Kendall Bros. Ltd** at their **Eastern Road Wharf** and forwarded by road to various construction sites within the UK.
- d) The British ship owner and operator **John H Whitaker (Tankers) Ltd** has two bunker tankers servicing vessels at the Commercial Port on a daily basis. The 4,200 tonne **Whitchallenger** (2002) and the 2,850 tonne **Jayne W** (1996) provide fuel supplies (from marine gas oil to heavy fuel oil) around the clock on behalf of ExxonMobil. In 2005 more than 1,000 bunker operations were conducted. *e-mail - AJ@JHW-SOTON.CO.UK*
- e) **North Quay** offers additional facilities to the Port as a lay-by berth for the coastal tankers and bunker barges. **CPL Ltd** (www.cplpetroleum.co.uk) operates the small oil terminal at the eastern end of North Quay, **CPL Ltd** also supplies Marine Fuel and Oil for all marine vessels from two points within the Harbour boundaries – Camber Docks and Fountain Lake.

IMPORTS 2008

COMMODITY	ANNUAL TONNAGE	NO. OF SHIPS	PORT OF ORIGIN	AREA CODE	LOADING BERTH	AGENT/STEVEDORE
Ballast	258,936	not declared	Sea	OP	Kendalls	Kendall Bros. Ltd
	74,222	77	Sea	OP	Tipner	Northwood (Fareham) Ltd
	1,504	2	Southampton	OP	Tipner	Northwood (Fareham) Ltd
	334,662	79				
Fruit	6,520	7	Agadir	NA	AJQ	MMD (Shipping Services) Ltd
	30,620	38	Agadir	NA	Flathouse	MMD (Shipping Services) Ltd
	69,654	15	Belize	CA	AJQ	MMD (Shipping Services) Ltd
	34,275	5	Belize	CA	Flathouse	MMD (Shipping Services) Ltd
	22,164	7	Costa Rica	NA	AJQ	MMD (Shipping Services) Ltd
	80,871	15	Dominican Rep	WI	AJQ	MMD (Shipping Services) Ltd
	141,754	36	Turbo	CA	AJQ	MMD (Shipping Services) Ltd
	9,472	6	Turbo	CA	Flathouse	MMD (Shipping Services) Ltd
	142,341	56	Windward Isles	WI	AJQ	MMD (Shipping Services) Ltd
	630	1	Windward Isles	WI	Flathouse	MMD (Shipping Services) Ltd
	538,301	186				
General inc Empies	835		Guernsey	CW	AJQ	Huelin Renouf Shipping
	1,904		Guernsey	CW	Flathouse	Huelin Renouf Shipping
	799		Jersey	CW	AJQ	Huelin Renouf Shipping
	1,661		Jersey	CW	Flathouse	Huelin Renouf Shipping
	5,199	-				
Vehicles	187		Guernsey	CW	AJQ	Huelin Renouf Shipping
	68		Guernsey	CW	Flathouse	Huelin Renouf Shipping
	89		Jersey	CW	AJQ	Huelin Renouf Shipping
	34		Jersey	CW	Flathouse	Huelin Renouf Shipping
	378	-				
TOTAL IMPORTS	878,540	265				

Export

Index

EXPORTS 2008

COMMODITY	ANNUAL TONNAGE	NO. OF SHIPS	DESTINATION	AREA CODE	LOADING BERTH	AGENT/STEVEDORE
Building Materials	1,882		Guernsey	CW	AJQ	Huelin Renouf Shipping
	5,321		Guernsey	CW	Flathouse	Huelin Renouf Shipping
	4,195		Jersey	CW	AJQ	Huelin Renouf Shipping
	13,539		Jersey	CW	Flathouse	Huelin Renouf Shipping
	24,937	-				
Fertiliser	491		Guernsey	CW	AJQ	Huelin Renouf Shipping
	1,464		Guernsey	CW	Flathouse	Huelin Renouf Shipping
	582		Jersey	CW	AJQ	Huelin Renouf Shipping
	1,284		Jersey	CW	Flathouse	Huelin Renouf Shipping
	3,821	-				
General inc Empties	9,597		Agadir	NA	AJQ	MMD (Shipping Services) Ltd
	34,470		Agadir	NA	Flathouse	MMD (Shipping Services) Ltd
	3,255		Belize	CA	AJQ	MMD (Shipping Services) Ltd
	3,607		Belize	CA	Flathouse	MMD (Shipping Services) Ltd
	3,466		Costa Rica	CA	AJQ	MMD (Shipping Services) Ltd
	133		Dominican Rep	WI	AJQ	MMD (Shipping Services) Ltd
	7,792	10	Guernsey	CW	AJQ	Huelin Renouf Shipping
	21,034	22	Guernsey	CW	Flathouse	Huelin Renouf Shipping
	972	1	Jamacia	WI	Flathouse	MMD (Shipping Services) Ltd
	11,717	18	Jersey	CW	AJQ	Huelin Renouf Shipping
	37,221	101	Jersey	CW	Flathouse	Huelin Renouf Shipping
	520	1	Southampton	CW		Huelin Renouf Shipping
	13,807		Turbo	CA	AJQ	MMD (Shipping Services) Ltd
	158		Turbo	CA	Flathouse	MMD (Shipping Services) Ltd
	64,155		Windward Isles	WI	AJQ	MMD (Shipping Services) Ltd
694		Windward Isles	WI	Flathouse	MMD (Shipping Services) Ltd	
212,598	153					
Steel	302		Guernsey	CW	AJQ	Huelin Renouf Shipping
	847		Guernsey	CW	Flathouse	Huelin Renouf Shipping
	53	7	Cowes	CW	Camber	Ken Brown Boats Ltd
	292		Jersey	CW	AJQ	Huelin Renouf Shipping
	1,279		Jersey	CW	Flathouse	Huelin Renouf Shipping
	2,773	7				
Timber	1,244		Guernsey	CW	AJQ	Huelin Renouf Shipping
	2,694		Guernsey	CW	Flathouse	Huelin Renouf Shipping
	4	1	Cowes	CW	Camber	Ken Brown Boats Ltd
	1,751		Jersey	CW	AJQ	Huelin Renouf Shipping
	4,353		Jersey	CW	Flathouse	Huelin Renouf Shipping
10,046	1					
TOTAL EXPORTS	254,175	161				
IMPORTS	878,540	265				
OVERALL TOTAL	1,132,715	426				

AREA CODES:

CW = Coastwise
 NA = North Africa
 CA = Central America
 OP = One Port

NZ = New Zealand
 SAM = South America
 NE = North Europe
 WI = West Indies

[Summary](#)

[Index](#)

SUMMARY OF IMPORTS BY COMMODITY

Excluding Unitised Traffic RO/RO Trade CFP - 2000 - 2008

COMMODITY	2000	2001	2002	2003	2004	2005	2006	2007	2008
Ballast	456,608	383,495	351,440	320,539	333,182	315,050	399,688	413,054	334,662
Building Materials									
Coal									
Empties	1,970	2,008	2,199	2,419	2,633	2,472	2,104	1,324	1,450
Fertiliser									
Fruit	163,318	165,599	402,593	452,680	529,883	697,942	752,855	468,287	536,082
Fuel Oil	11,021	4,757	1,949						
General	4,205	3,287	3,614	2,946	1,584	2,266	5,683	9,585	5,329
Grain									
Miscellaneous									
Oil									
Potatoes									
Steel	160		34		75	3	7		
Timber									
Tomatoes									
Vegetables									
Vehicles	145	199	63	141	148	153	104	436	378
Total Tonnages	637,427	559,345	761,892	778,725	867,505	1,017,886	1,160,441	892,686	877,901

SUMMARY OF EXPORTS BY COMMODITY

Excluding Unitised Traffic RO/RO Trade CFP - 2000 - 2008

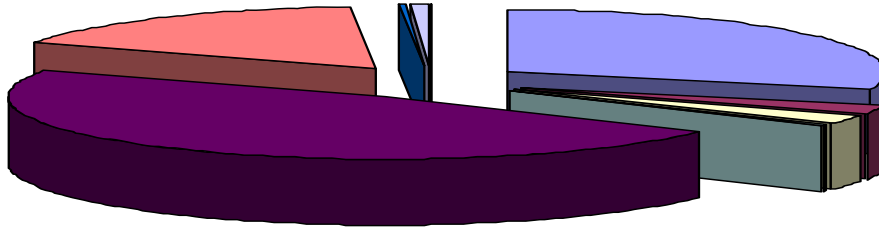
COMMODITY	2000	2001	2002	2003	2004	2005	2006	2007	2008
Ballast					272	18			
Building Materials	24,104	22,926	29,441	29,184	31,192	34,247	36,253	22,471	24,937
Coal									
Fertiliser	1,834	962	537	542	851	777	374	2,470	3,821
Fuel Oil									
Fruit									
General	88,732	95,904	120,579	156,879	168,216	172,805	172,897	194,777	212,598
Grain									
Miscellaneous									
Oil									
Steel	3,991	3,487	3,764	2,934	4,054	4,108	4,227	2,334	2,773
Timber	8,419	9,918	9,465	11,014	10,404	12,117	9,648	8,824	10,046
Vehicles				27			31		
Total Tonnages	127,080	133,197	163,786	200,580	214,989	224,072	223,430	230,876	254,175

Total Commodities	764,507	692,542	925,678	979,305	1,082,494	1,241,958	1,383,871	1,123,562	1,132,076
--------------------------	----------------	----------------	----------------	----------------	------------------	------------------	------------------	------------------	------------------

Foreign

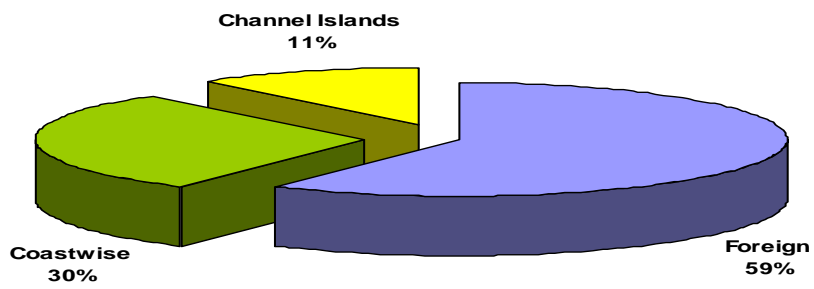
Index

Commodity Totals 2008



■ Ballast & Shingle ■ Building Materials ■ Empties ■ Fertilizer ■ Fruit ■ General ■ Iron & Steel ■ Timber ■ Vehicles

Principal Trading Areas 2008



FOREIGN TONNAGES 2003 - 2008
Excluding Unitised Traffic RO/RO Trade CFP

2003

AREA	IMPORT	EXPORT	TOTAL	%
North Africa	62,516	2,831	65,347	12.1%
South Africa	6,217	40	6,257	1.2%
New Zealand	8,232	824	9,056	1.7%
North Europe			0	0.0%
West Indies	236,756	78,010	314,766	58.1%
Mediterranean			0	0.0%
Cent & Sth America	140,604	6,022	146,626	27.1%
Total	454,325	87,727	542,052	100%

2004

IMPORT	EXPORT	TOTAL	%
57,878	615	58,493	9.3%
		0	0.0%
6,981	1,204	8,185	1.3%
		0	0.0%
235,663	86,337	322,000	51.4%
		0	0.0%
229,361	8,740	238,101	38.0%
529,883	96,896	626,779	100%

2005

AREA	IMPORT	EXPORT	TOTAL	%
North Africa	46,493	136	46,629	5.8%
West Africa	135,302	2,656	137,958	17.2%
New Zealand	7,150	331	7,481	0.9%
North Europe		171	171	0.0%
West Indies	245,412	89,134	334,546	41.8%
Mediterranean			0	0.0%
Cent & Sth America	263,585	10,581	274,166	34.2%
Total	697,942	103,009	800,951	100%

2006

IMPORT	EXPORT	TOTAL	%
45,902	4,721	50,623	5.9%
129,137	2,175	131,312	15.2%
4,037	339	4,376	0.5%
		0	0.0%
367,937	91,306	459,243	53.2%
		0	0.0%
207,996	9,638	217,634	25.2%
755,009	108,179	863,188	100%

2007

AREA	IMPORT	EXPORT	TOTAL	%
North Africa	31,599	26,446	58,045	9.7%
West Africa	12,013	370	12,383	2.1%
New Zealand	5,605	690	6,295	1.1%
North Europe		868	868	0.1%
West Indies	316,334	87,482	403,816	67.5%
Mediterranean			0	0.0%
Cent & Sth America	108,972	8,241	117,213	19.6%
Total	474,523	124,097	598,620	100%

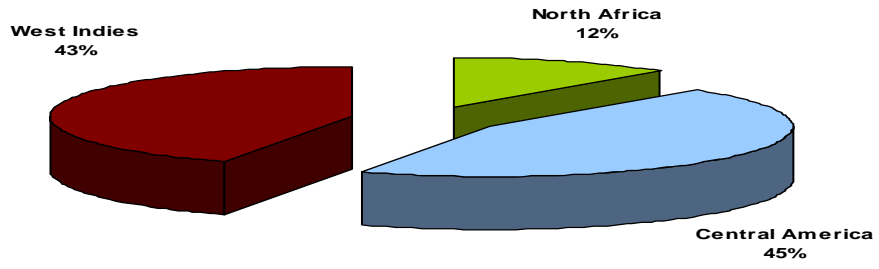
2008

IMPORT	EXPORT	TOTAL	%
36,501	44,067	80,568	12.0%
		-	0.0%
		-	0.0%
		-	0.0%
223,852	65,954	289,806	43.1%
		-	0.0%
277,319	24,293	301,612	44.9%
537,672	134,314	671,986	100%

Coastwise

Index

Foreign Tonnage 2008



COASTWISE TONNAGES

Excluding Unitised Traffic RO/RO Trade CFP

2008

AREA	IMPORTS	EXPORTS	TOTALS	%
Sea	334,158	0	334,158	72.5%
UK	1,504	57	1,561	0.3%
Jersey	2,583	76,733	79,316	17.2%
Guernsey	2,994	43,071	46,065	10.0%
Total Tonnages	341,239	119,861	461,100	100%

Channel Islands

Index

CHANNEL ISLAND TONNAGES

Excluding Unitised Traffic RO/RO Trade CFP

2008

Imports

COMMODITY	JERSEY	GUERNSEY	TOTAL	%
General	2,460	2,739	5,199	93.2%
Vehicles	123	255	378	6.8%
Total Tonnages	2,583	2,994	5,577	100%

Exports

COMMODITY	JERSEY	GUERNSEY	TOTAL	%
Building Materials	17,734	7,203	24,937	20.8%
Fertilizer	1,866	1,955	3,821	3.2%
General	49,458	28,826	78,284	65.3%
Steel	1,571	1,149	2,720	2.3%
Timber	6,104	3,938	10,042	8.4%
Total Tonnages	76,733	43,071	119,804	100%

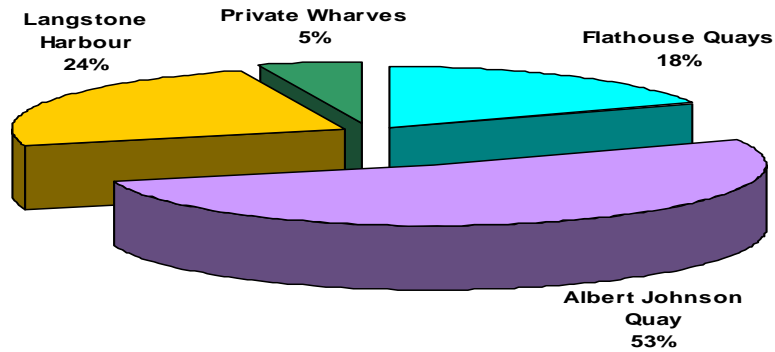
Imports and Exports 2002 - 2008

	2002	2003	2004	2005	2006	2007	2008
Jersey	79,213	75,262	78,237	84,462	79,922	72,191	79,316
Guernsey	38,304	41,408	43,433	41,443	40,963	39,697	46,065
Total	117,517	116,670	121,670	125,905	120,885	111,888	125,381

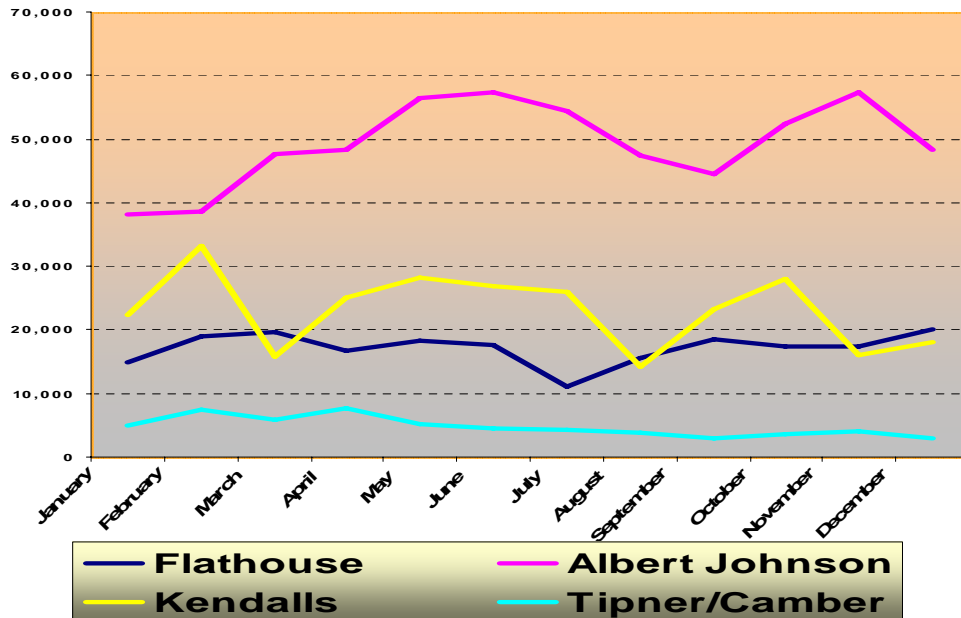
Tonnage by Quay

Index

Docks Tonnages 2008



Monthly Tonnages 2008



SUMMARY OF TOTAL TONNAGES BY QUAY 2001 - 2008

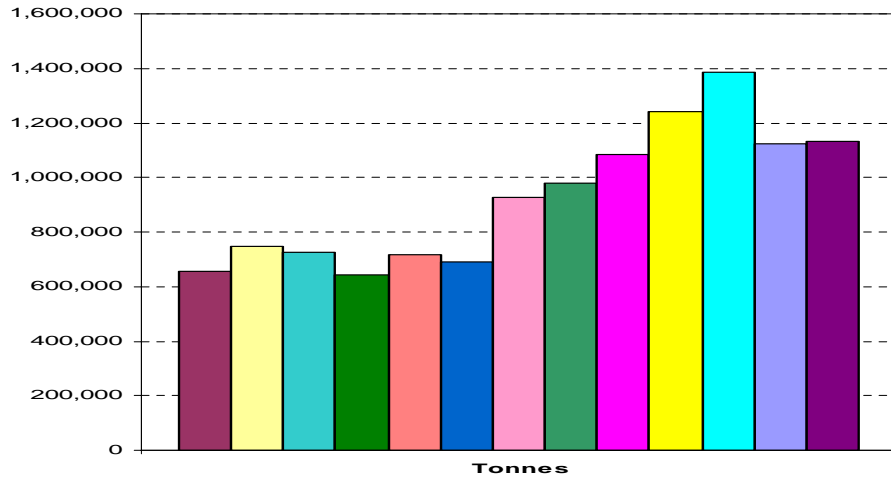
Excluding Unitised RO/RO Trade - CFP

Dock	2001	%	2002	%	2003	%	2004	%	2005	%	2006	%	2007	%	2008	%
Flathouse	162,852	23.5%	216,093	23.3%	229,891	23.5%	227,184	21.0%	290,403	23.4%	287,870	20.8%	265,421	23.6%	206,076	18.2%
Albert Johnson Quay	141,363	20.4%	356,161	38.5%	428,831	43.8%	521,300	48.2%	636,453	51.2%	696,203	50.3%	446,481	39.7%	591,281	52.2%
Private Wharves	57,266	8.3%	60,249	6.5%	33,902	3.5%	29,516	2.7%	47,256	3.8%	57,004	4.1%	60,614	5.4%	57,645	5.1%
Langstone	331,061	47.8%	293,175	31.7%	286,681	29.3%	304,494	28.1%	267,846	21.6%	342,794	24.8%	352,440	31.3%	277,074	24.5%
Total	692,542	100%	925,678	100%	979,305	100%	1,082,494	100%	1,241,958	100%	1,383,871	100%	1,124,956	100%	1,132,076	100%

Distribution	2001	%	2002	%	2003	%	2004	%	2005	%	2006	%	2007	%	2008	%
Foreign	189,641	27.4%	454,737	49.1%	542,052	55.4%	626,779	57.9%	800,951	64.5%	863,188	65.2%	598,620	53.3%	671,976	59.4%
Coastwise	388,327	56.1%	353,424	38.2%	320,583	32.7%	334,045	30.9%	315,102	25.4%	339,798	25.7%	413,054	36.8%	334,719	29.6%
Channel Islands	114,574	16.5%	117,517	12.7%	116,670	11.9%	121,670	11.2%	125,905	10.1%	120,885	9.1%	111,888	10.0%	125,381	11.1%
Total	692,542	100%	925,678	100%	979,305	100%	1,082,494	100%	1,241,958	100%	1,323,871	100%	1,123,562	100%	1,132,076	100%

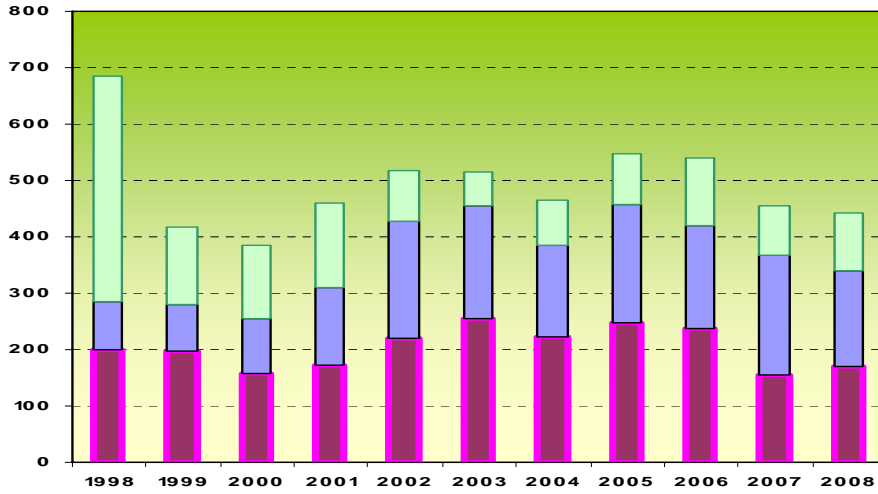
Roll on/Roll Off Index

Tonnage Trends 1996-2008



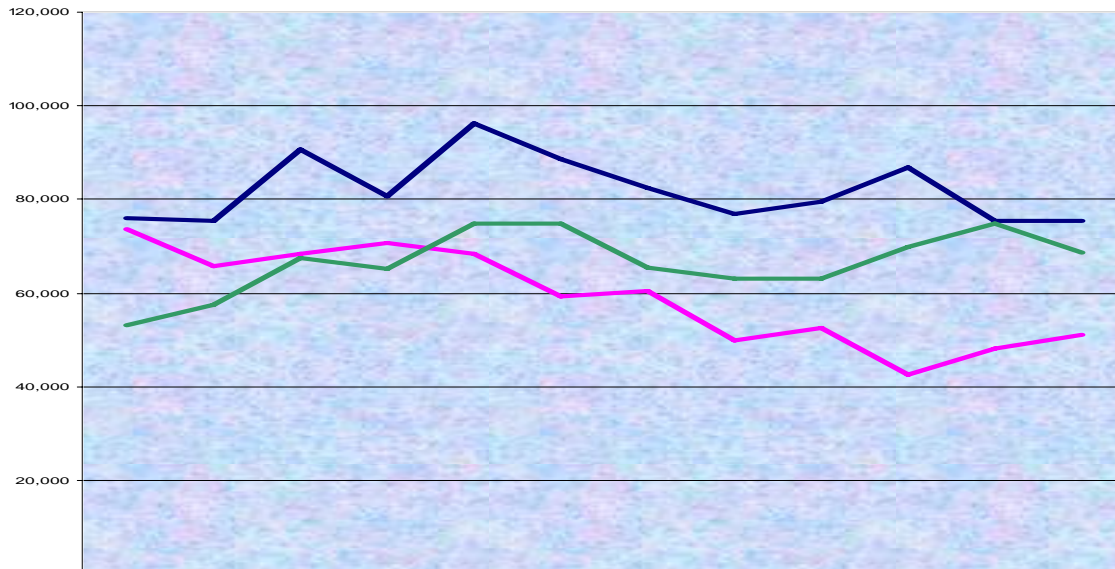
1996	1997	1998	1999	2000	2001
2003	2004	2005	2006	2007	2008

Commercial Shipping Movements



■ **Albert Johnson Quay** ■ **Flathouse Quays**
■ **Private Wharves**

Comparison of Cargo Landed AJQ/Flathouse 2006 - 2008



	January	February	March	April	May	June	July	August	September	October	November	December
2006	75,879	75,442	90,523	80,809	96,378	88,518	82,308	76,999	79,440	86,858	75,375	75,544
2007	73,624	65,821	68,221	70,788	68,316	59,210	60,352	50,004	52,636	42,409	47,999	51,128
2008	53,148	57,604	67,423	65,219	74,777	74,852	65,428	63,185	63,040	69,872	74,915	68,533

Continental Ferry Port

The Continental Ferry Port, situated at the end of the M275, was opened in June 1976. Initially providing two cross channel companies with an operating area of approximately 4 acres of land reclaimed from Portsmouth Harbour and a single linkspan from which a summer only passenger service to Cherbourg and St Malo was planned. However, before the year was out an all year round freight service commenced in addition to the passenger services.

Towards the end of 1977, a second linkspan was installed, providing a third shipping company with the facility to operate a daily passenger/freight service to the Channel Islands (both Jersey and Guernsey).

Additional reclamation of land from the Harbour and the purchase of land to the land ward side of the Ferry Port enabled the City Council to keep abreast of the increase in demand and the site currently occupies some 17.6 hectares (44 acres). With the opening of a new exit in July 1998, egress from the Port for most car drivers is directly onto the M275.

Continued development of the Port has seen the installation of a new passenger gangway on number 3 berth, refitting of linkspan and associated machinery number on number 4 berth.

With the assistance of grant monies from European funding, a project aimed at reducing the numbers of heavy goods vehicles on the roads by bringing containers to and from Portsmouth by rail to Fratton Goods Yard concluded during 2008.

With three trains a week running to Wakefield Europort, Leeds and two per week to Trafford Park, Manchester, fruit from the Commercial Quays at Portsmouth can now reach the North of England quicker, and greener than if taken by road haulage.

Investment within the Passenger Terminal area includes a new passenger information service, giving travellers up to the minute updates on all travel routes and offering an advertising opportunity to businesses of all sizes.

Felmarine, manages the sale of digital advertising both on the Passenger Information Display Screens within the Terminal buildings and also onboard ferries leaving Portsmouth - contact sales@felmarine.com or visit www.felmarine.com for more information.

Each advert in the terminal is displayed a minimum of 7 times per hour throughout the terminal building. These screens are a great way to advertise your services or product to a captive audience whilst waiting to embark at the port.

Visitor and long term parking with the capacity for 516 cars is provided in a multi-storey car park operated by **APCOA**.

Arranged over five floors, there is a dedicated space for motorcycles and an electronic car service to transport disabled passengers to and from the Terminal Building. The top floor is reserved for staff employed by the Port Authority and companies serving the Port.

In the event of a problem on their return, **APCOA** staff are available with facilities ranging from a battery pack to jump start a flat battery, to re-inflate a flat tyre or assistance if required to change a wheel.

Busiest times tend to correspond with the arrival/departure of the Bilbao service, with the average length of stay being 3 days.

Condor Ferries (www.condorferries.co.uk) offers a twice daily all year round conventional service linking Portsmouth with the Channel Islands of Guernsey and Jersey.

The passenger service departs Portsmouth each morning whilst a freight service with limited driver accommodation departs each evening.

It is regarded as a lifeline service and apart from transporting the commodities that are required to sustain the population of the Islands it also provides the method of shipping the Islands produce back to the UK.

Amongst this produce are fresh cut flowers, tomatoes, salad, and vegetables including the Jersey Royal Potato crop, which usually amounts to about 35,000 tonnes per annum.

French links are provided to St Malo each Friday whilst a weekly service to Cherbourg is operated on a Sunday throughout August and September with the caravan enthusiast in mind.

Brittany Ferries (www.brittanyferries.com) accounts for over 50% of traffic on the western Channel and is a leading supplier of ferry-inclusive motoring holidays to France and Spain.

Three daily return sailings are operated between Portsmouth and Caen by the **Mont St Michel** (with capacity for 2,200 passengers and 800 cars) and **Normandie** (2,120 passengers, 600 cars). The crossing time is 6 hours.

The Portsmouth – St Malo route is served by the ever-popular **Bretagne** (2,056 passengers, 580 cars) with a daily overnight sailing from Portsmouth and a daytime return sailing from St Malo. The crossing takes 8¾ hours. In early 2009, the **Bretagne** underwent an extensive £5 million modernisation programme which saw public areas and cabins being renewed.

From April until November, the high speed ferry, **Normandie Express** (850 passengers, 235 cars) offers a daily return sailing between Portsmouth and Cherbourg, with a crossing time of just three hours, as well as an additional departure from Portsmouth to Caen on Fridays, Saturdays and Sundays.

A new service from Portsmouth to Santander commences on 18 March, 2009. This route will be operated by Brittany Ferries' luxurious flagship, the **Pont Aven**, (2,400 passengers, 650 cars) with a crossing time of just 24 hours.

P&O Ferries (www.poferries.com) sails from **Portsmouth** to **Bilbao**, in Spain's Basque country with the cruise ferry **Pride of Bilbao**. The ship departs every three days and is as popular for tourists heading for the far south of France as with those planning to tour Spain and Portugal.

LD Lines (www.ldlines.co.uk) is a subsidiary of the French owner **LDA (Louis Dreyfus Armateurs)**. They commenced operations on the Le Havre to Portsmouth route on 3 October 2005, with their vessel **Norman Spirit**, and have shown continued commitment to Portsmouth with the arrival in November 2008 of their new vessel **Norman Voyager**.

The **Norman Voyager** has a freight capacity of 2250 lane metres, which allows the transportation of up to 120 trucks/trailers and is also designed to carry up to 800 passengers in 110 cabins and reclining seats.

Onboard there is a bar, restaurant, cinema, Wifi area and comfortable lounges to relax in during the crossing.

"Le Bistro du Norman" self-service restaurant Discover all the pleasures of British, Irish, French and vegetarian gastronomy in the right atmosphere.

The *"Shamrock Pub"* – be seated in comfortable armchairs and enjoy a pleasant journey while you may choose amongst a great choice of beers, rich coffee blend, or fruit juices.

The Wave Shop

The Norman Voyager features an on board shop, the Wave Shop, which will offer a wide range of alcohols, tobaccos, perfumes, but also books, cameras, chocolates and many other gift ideas... to make your shopping more varied.

For your comfort and a restful trip, the Norman Voyager offers of a range of 110 highly comfortable cabins.

- 2 x 2 berth disabled cabin
- 10 x 2 berth outside cabin
- 35 x 4 berth outside cabin
- 62 x 4 berth inside cabin

The Norman Voyager also provides a number of services in order to guarantee you a pleasant journey.

Amongst these latter, you will not only get Internet access via satellite during the whole of the crossing, from the WIFI coverage or the Internet Café, but also enjoy GSM (mobile phone) services onboard the vessel.

You may also choose to watch a recent movie in the Movie Theatre or rent a DVD and DVD player to relax during your trip.

The **Norman Spirit** was refit during the summer of 2006 to offer passengers a full bed sleeper seat as well as a variety of services including seven bars and restaurants, child play areas, the Pet Travel Scheme and shopping, for its car and foot passengers as well as hauliers, coach parties and motorcyclists.

In addition some 59 cabins have been designed to provide all essential amenities for the crossing.

Passenger Terminal Building and Travel Centre

Within the Continental Ferry Port buildings a range of services are available to the traveller from 6am until midnight.

Travelex UK Ltd (www.travelex.co.uk) operates the foreign exchange bureau located in the main passenger terminal. Their friendly sales team can provide you with Euro currency together with Euro, US\$ or Sterling travellers cheques.

Although best known for its bureaux de change in many tourist locations, **Travelex UK Ltd** can also offer a wide range of travel and financial products, mobile phone top up vouchers, stamps, travel insurance and Royal Mint gift sets to name but a few of those available at Portsmouth.

A bank Automated Telling Machine for convenient cash withdrawal is located adjacent to the Bureau.

A wide range of retail and catering facilities within the Continental Ferry Port are provided by **Aramark Ltd** (www.aramark.co.uk) Travellers can choose from “grab and go” shops or enjoy a relaxed meal in the restaurant or bar areas. The café area within the main Terminal Building has recently been re-branded **Wild Bean**.

Also on sale are continental style coffees, herbal teas and iced drinks. Deli style sandwiches and baguettes to go, along with fresh pastries and paninis .

Meanwhile their retail shops stock a wide range of magazines and books, gifts and confectionery and health and beauty items.

Over at the **Travel Centre**, situated at the end of the vehicle collecting lanes additional services are provided for the visitor to Portsmouth Ferry Port.

European Motoring operated by **Clarendell Motoring** (www.travel-spot.co.uk) provides all the necessary motoring accessories to ensure that motorists are safe and legal, meeting all the EEC Motoring Regulations, whilst travelling on the continent.

Also within the Travel Centre, **InterCash Bureau de Change Ltd** (www.intercashuk.com) has served an average of 40,000 customers annually since it opened at the Port in 1994.

With competitive rates and 0% Commission their friendly sales team will be happy to provide you with all your foreign currency requirements.

Aramark Ltd operates a second retail outlet carrying a wider range of products including phrase books and road atlases.

Adrenalin Advertising Ltd (email: info@[adrenalinadvertising.com](mailto:info@adrenalinadvertising.com)) maintains and markets over 30 illuminated static display panels of varying sizes throughout the port and terminal buildings. These advertising sites can be purchased for periods from 2 weeks upwards to display adverts to an audience of over 2.5m commercial and leisure travellers.

ROLL ON/ROLL OFF AND OTHER FERRY SERVICES

2000 - 2008

Isle of Wight Car Ferry

	2000	2001	2002	2003	2004	2005	2006	2007	2008
Vehicle Units	936,495	958,310	986,030	1,001,188	1,001,874	1,046,635	992,973	996,329	761,259
Passengers	2,625,764	2,662,263	2,784,898	2,796,666	2,812,393	2,760,669	2,628,510	2,551,030	2,028,295
Total	3,562,259	3,620,573	3,770,928	3,797,854	3,814,267	3,807,304	3,621,483	3,547,359	2,789,554

Isle of Wight Passenger Ferry

	2000	2001	2002	2003	2004	2005	2006	2007	2008
Passengers	1,395,722	1,469,934	1,454,647	1,471,246	1,461,733	1,459,763	1,433,319	1,345,541	1,141,117
Total	1,395,722	1,469,934	1,454,647	1,471,246	1,461,733	1,459,763	1,433,319	1,345,541	1,141,117

Isle of Wight Hovercraft Service

	2000	2001	2002	2003	2004	2005	2006	2007	2008
Passengers	691,910	720,449	703,117	765,032	763,691	756,579	779,528	795,776	803,795
Total	691,910	720,449	703,117	765,032	763,691	756,579	779,528	795,776	803,795

Gosport Ferry Passenger Service

	2000	2001	2002	2003	2004	2005	2006	2007	2008
Passengers	2,773,970	3,467,338	3,431,716	3,717,202	3,860,593	3,747,533	3,597,817	3,643,429	3,666,119
Total	2,773,970	3,467,338	3,431,716	3,717,202	3,860,593	3,747,533	3,597,817	3,643,429	3,666,119

Continental and Channel Island Services

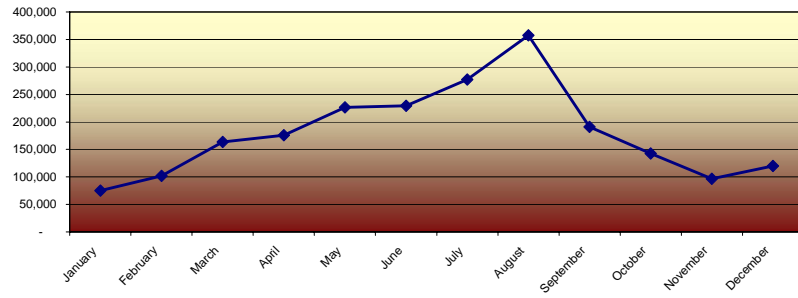
	2000	2001	2002	2003	2004	2005	2006	2007	2008
Vehicle Units	942,577	983,584	1,018,551	931,876	915,009	790,237	663,058	648,064	654,745
Freight Units	320,741	317,452	313,429	319,553	307,994	283,735	269,317	268,523	263,582
Passengers inc cruise	3,305,840	3,414,903	3,481,537	3,190,446	3,154,421	2,711,126	2,226,253	2,163,111	2,160,208
Total	4,569,158	4,715,939	4,813,517	4,441,875	4,377,424	3,785,098	3,158,628	3,079,698	3,078,535

Shipping by Quay

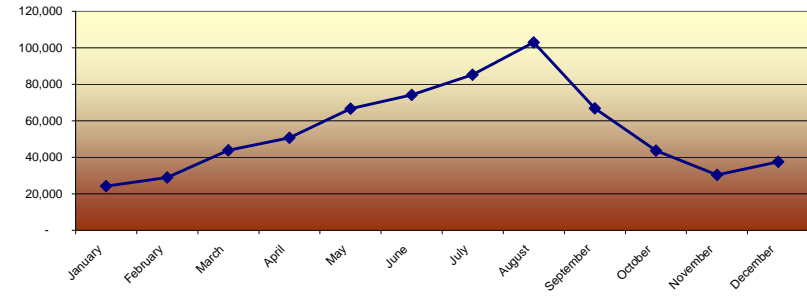
Index

Monthly Throughput Traffic at Continental Ferry Port, Portsmouth 2008

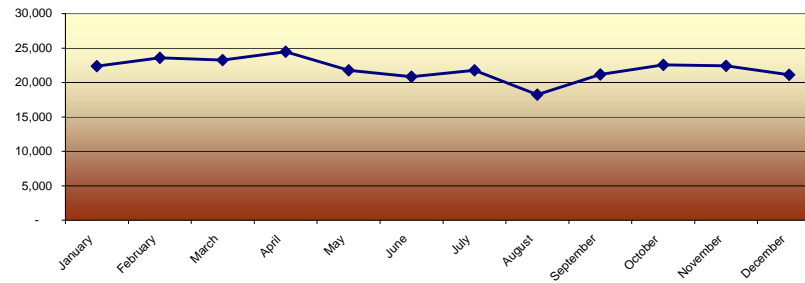
Passengers 2008



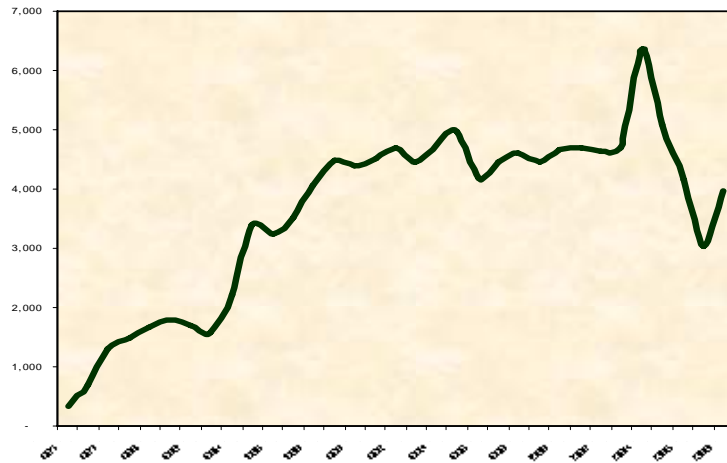
Passenger Vehicles 2008



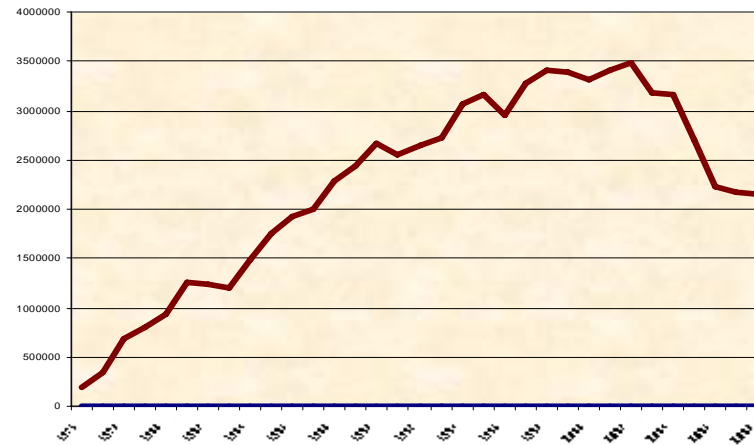
Freight Units 2008



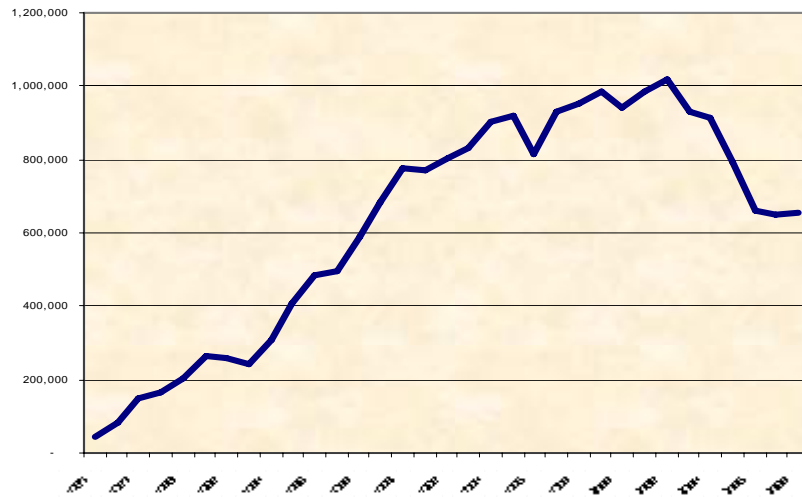
Shipping Movements Continental Ferry Port 1976 to 2008



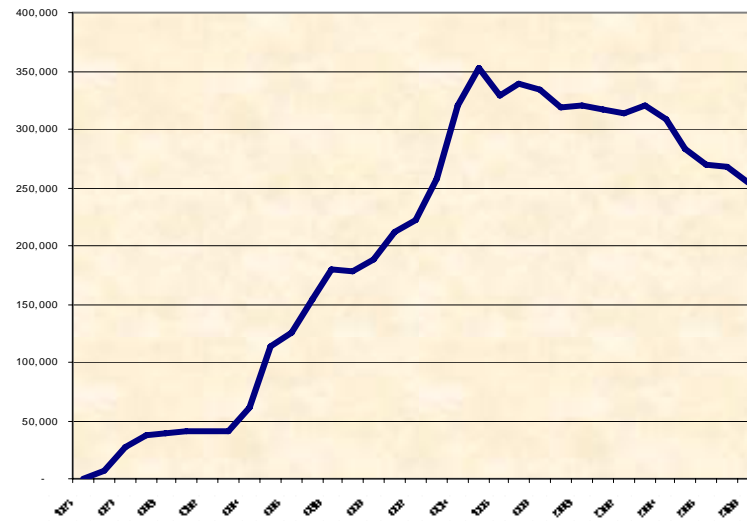
Passenger Throughput Continental Ferry Port 1976 to 2008



Passenger Vehicles throughput Continental Ferry Port 1976 to 2008



Freight Vehicles throughput 1976 to 2008



SHIPPING ARRIVALS

2000 - 2008

Dock	2000	2001	2002	2003	2004	2005	2006	2007	2008
Flathouse	97	137	240	231	266	209	183	212	169
Albert Johnson Quay	151	172	299	316	463	248	237	156	170
Private Wharves	151	91	161	139	113	89	120	87	103
I O W Car Ferry	11,558	11,940	12,449	12,523	12,472	12,336	11,207	11,255	11,547
I O W Passenger Ferry	11,542	11,507	11,432	11,590	11,659	11,602	11,563	11,773	11,789
Hovertravel	9,309	9,659	9,511	9,793	9,734	9,640	10,387	9,750	9,750
Gosport Ferry	34,400	34,744	34,744	34,744	34,744	34,744	34,744	36,400	36,400
Water Taxi (seasonal)				80	86	82			
Continental Ferry Port	4,671	4,706	4,623	4,711	6,373	5,102	4,155	3,041	3,975
Total	71,879	72,956	73,459	74,127	75,910	74,052	72,596	72,674	73,903

Index