

Portsmouth Commercial Port Port Statistics 2006



A service of
Portsmouth
CITY COUNCIL 

www.portsmouth-port.co.uk

PORTSMOUTH COMMERCIAL PORT

PORT STATISTICS 2006

Portsmouth Commercial Port

About Portsmouth Harbour
Local Ferry Services and Cruise Facilities
Private and Commercial Wharves

Commodities

Imports 2006
Exports 2006
Summary of Imports and Exports by Commodity 1995 - 2006
Graph of Commodity Totals
Graph of Principal Trading Areas
Foreign Tonnage 2001 - 2006
Graph of Foreign Tonnage 2006
Coastwise Tonnage 2006
Channel Island Tonnage 2006
Graph of Monthly Tonnage 2006
Graph of Docks Tonnage by Quay
Summary of Tonnage by Quay 1998 – 2006
Annual Trends - Tonnage 1997 – 2006
Annual Trends - Commercial Shipping 1997 - 2006
Comparison of Cargo Landed at Commercial Wharves 2005 –2006

Continental Ferry Port

Continental Ferry Port
Passenger Terminal Building and Travel Centre
Roll on/Roll off and other Ferry Services
Graphs of Monthly Throughput: -
 Passengers 2006
 Vehicles 2006
 Freight 2006
 Comparison of Port Traffic 2005 / 2006
Graphs of Annual Growth 1976-2006
 Passengers / Vehicles / Freight / Shipping
Shipping Movements 1996 -2006

Portsmouth Commercial Port

About Portsmouth Harbour

Portsmouth Harbour is known the world over as a Naval Port and home and maintenance base for the Royal Navy. The Royal Dockyard had its beginnings as long ago as the 13th Century.

The Commercial Port is in the ownership of Portsmouth City Council and is controlled by the Executive Member for Planning, Regeneration, and Economic Development, currently Councillor Mike Hancock CBE MP.

In 1839 an Act of Parliament sanctioned the then City Council to carry out construction for the betterment of the Port, which in those days meant the Quays at Camber Docks. It also authorised servants of the Council to collect Harbour Dues on ships using the Port and additional dues for all cargo passing over the quays.

Since those early days further Acts have been obtained to authorise the expansion of the Port, the building of new quays, modernisation of existing facilities and to construct the Continental Ferry Port.

The Continental Ferry Port, Commercial Quays and the local ferry companies continue to invest in new vessels and site development in response to the demand.

The number of Royal Navy ships now based in Portsmouth has decreased but the facilities within the Naval Dockyard are once again being used to build and repair boats, not only for the Royal Navy but also Foreign Navies and commercial ventures.

Tall Ships, Ocean Racers and Global Challenge vessels have all made Portsmouth the start or finish of their sea going adventure, with their crews enjoying leisure ashore, in the numerous waterside bars, restaurants and shopping areas to choose from.

The waters in and around Portsmouth Harbour are rarely quiet. In addition to the Royal Navy, local ferries and traffic to the commercial quays and Continental Ferry Port it also provides a safe haven for yachts and other small craft within the growing number of marinas and safe mooring areas.

Local Ferry Services and Cruise Facilities

- a) **Wightlink, Isle of Wight Ferries** (www.wightlink.co.uk) provides Portsmouth's only car and passenger service to the Isle of Wight from a roll-on/roll-off berth at Gunwharf Terminal.

Five vehicle ferries service the **Portsmouth** to **Fishbourne** route, which carries the bulk of **Wightlink's** freight traffic as well as leisure traffic. The route is especially suited to the shipment of abnormal loads as the vessels have double width ramps and can accommodate extra long or heavy loads, subject to sufficient spread of weight. High vehicles can also be accommodated with prior notification. All terminals have tide-following linkspans connecting shore with ship for easy loading.

Wightlink's FastCat foot passenger catamaran service operates between **Portsmouth Harbour Station** and **Ryde Pier Head** and has direct rail connections on either side. Trains from London, Wales and the West Country, as well as local South Coast towns all deliver passengers direct to Portsmouth Harbour Station.

The service operates from the early hours of the morning until after midnight. For most of the day a frequent service is offered every half-hour, and the Island is just 15 minutes away on this **FastCat** route.

- b) Operating from the Hoverport on the seafront at **Southsea**, **Hovertravel Ltd** (www.hovertravel.co.uk) has run their regular passenger only hovercraft service to **Ryde** since 1965.

With an average crossing time of just 10 minutes and departures every 30 minutes for most of the day, rising to every 15 minutes during peak times during the summer season, **Hovertravel** provide a "Frequent and Fast" service.

Hovertravel also provides a connecting bus service to **Portsmouth & Southsea** rail station and the City Centre. The bus meets most hovercraft arrivals, and return journeys are timed to connect with departures to **Ryde**.

- c) With almost 100 crossings every day, over three and a half million passengers in 2006 took the route from **Gosport**, commuting to work, or for shopping and pleasure trips to **Portsmouth** proving it really is "**Shorter by Water**". Taking a sea trip of approximately 4 minutes across the Harbour mouth on one of the two ferries operating on a scheduled service by **Gosport Ferry Ltd**.
- d) There is a wide choice of excursions or tours by water available from various companies operating from both Portsmouth and Gosport sides of Portsmouth Harbour.

These range from a waterbus tour of the Naval Dockyard to see the ships alongside in the home of the Royal Navy, with a drop off stop in **Gosport** at the **Submarine Museum** to an evening dinner and dance or disco cruise on board the **Spirit of Portsmouth**.

The visitor can take a **Solent & Wightline Cruises** Harbour Cruise lasting approximately 40 minutes viewing the RN ships in the dockyard and other areas of interest within Portsmouth Harbour, from their boarding pontoons at

either **Gunwharf Quays** or within the **Naval Dockyard**.

During the summer visitors can take a trip out to one of the Forts, built in Victorian times in the Solent to protect Portsmouth Harbour, for Sunday lunch and a tour, or an evening meal and disco.

For those who prefer the golden days of old; take a day or half-day sail on **SB Kitty**, a Thames rigged sailing barge based at Port Solent (www.sailingbargekitty.com).

Or for a return to the age of steam, step on board the world's last sea going paddle steamer, **Waverley**, for one of her cruises along the South of England coastline.

The **Waverley** visits Portsmouth each September, offering full day, afternoon, or evening cruises in and around the Solent & South Coast. Details can be found at www.waverleyexcursions.co.uk

- e) Operating all year round **Hayling Ferry** run a ferry service carrying foot passengers, bicycles, wheelchairs and small motorcycles across the entrance to Langstone Harbour between **Eastney and Hayling Island** linking the citizens of Portsmouth with the beaches and the holiday resorts on Hayling Island.
- f) **Camber Quay, Old Portsmouth** is home to Portsmouth's fishing fleet – some 30 to 40 vessels landing fresh fish and shellfish in season on a daily basis. Johnson's Fish Market, Grantham's fish stall and Viviers UK Ltd (www.viviers-uk.com) all sell a wide variety of fresh and frozen fish and live or cooked shellfish from their fish markets on the quaysides.

In addition, **Camber Quay** has facilities for long or short term lay up of yachts and pleasure boats.

KB Boat Park operated by **Ken Brown Boats Ltd** (www.kb-boatpark.co.uk) offers a dry berth launch & recovery service for small craft; summer and winter boat storage for larger motorboats and sailing yachts, plus lift & scrub and ancillary maintenance services.

During the height of the summer some 15 to 20 pleasure craft a day also secure to the Quay walls. The sailors disembark for a visit to the fortifications, to visit one of Old Portsmouth's public houses or hotels, many with fine views over the Harbour entrance and the Solent, or to buy from a wide variety of fish from the markets situated on the quayside.

- g) Meanwhile at the North Eastern end of Portsmouth Harbour some 25,500 vessels, mostly luxury pleasure craft having travelled via the small boat channel passed through the lock (43m x 9.1m) to enter or leave the Marina at Port Solent.

Port Solent Marina (www.premiermarinas.com), operated by Premier Marinas Ltd, was officially opened by the Princess Royal on 29 July 1988.

The site covers an area of 84 acres. There are shops, restaurants, pubs, leisure facilities, as well as over 600 residential homes and flats, an 808 marina with chandlers, boat brokers, Portsmouth Harbour Yacht Club and other marine services.

- h) With over 500m of berth space and the capability of accommodating boats of 75 metres in length, **Gunwharf Quays** (www.gunwharf-quays.com), is available to tall ships, corporate events as well as visiting boats.

Gunwharf Quays is also home to the newest landmark on Portsmouth's skyline, Spinnaker Tower and one of the South Coast's finest waterside developments with a plethora of shops and restaurants.

The **Tall Ships Youth Trust** vessels *Prince William* and *Stavros S Niachros* are regularly based at Gunwharf Quay and further details of their calls and the cruises offered to young persons can be found on their web site www.tallships.org

- i) During 2006 the Commercial Port had 13 cruise ship calls.

The ships ranged from 73 metres length overall to 175 metres.

These calls reflect the growing trend of smaller cruise vessels with a more discerning passenger wishing to explore Northern Europe's culture and sites.

With nearly 3,000 cruise passengers in 2006 passing through Portsmouth it was noted that as well as an interesting and historic port of call for transit passengers, on several of the calls passengers also either joined or left their cruise in Portsmouth.

Portsmouth is one of eight founder members ports of the Channel Cruise Group (www.channelcruise.com). This Group actively seeks out this growing trade to encourage a "circular cruise" between member ports in the English Channel.

The outlook for 2007 also looks good with 13 cruise ships already booked for the season.

Private and Commercial Wharves 2006

- a) **MMD (Shipping Services) Ltd** operating from the commercial wharves at **Flathouse Quay** and **Albert Johnson Quay**, provide full agency and stevedoring services.

Over 750,000 tonnes of fruit was imported on board 271 ships, via the commercial wharves at Portsmouth during 2006.

During 2006 all of the UK's imports of Moroccan citrus fruits, nearly 46,000 tonnes entered the country through the Port of Portsmouth.

The import of bananas (some 70% of the UK's consumption) for **Dole**, **Fyffes**, **Geest**, and **Jamaican Producers** along with other exotic fruits from South and Central America, the Caribbean, Jamaica, the Windward Islands, Cuba and the Dominican Republic in the West Indies are all handled by **MMD's** extensive cold store facilities adjacent to the deep water berths.

Further routes this year also allowed exotic fruit to be imported from the West African State of the Ivory Coast for **African Express Lines**.

On their return to the Caribbean and West Africa these ships carried over 108,000 tonnes of general cargo during the year including exported motor vehicles.

Summer 2006 saw a continuation of the contract to import Kiwi Fruit from New Zealand for **Zespri International**.

This fast moving development has been prompted by today's emphasis on healthy eating and is especially tuned to the needs of the supermarkets. As a result of supermarket approval, trade is growing quickly with imports of over 750,000 tonnes of quality fruit being sorted, packed and despatched to the supermarket shelves with the minimum of delay.

- b) **Huelin-Renouf Shipping** (www.huelin-renouf.co.uk) in partnership with MMD (Shipping Services) Ltd run a unitised lo-lo service to the Channel Isles with their vessel **MV Huelin Dispatch** capable of loading 140 x 20 TEU containers.

With 3 trips per week to and from the Channel Islands, **MV Huelin Dispatch** proves to be an ideal carrier for the tri-port, Jersey/Guernsey/Portsmouth, route. She is especially suited to Channel Island waters and the ports and berthing facilities available there.

- c) **Tipner Wharf** operated by Lafarge Aggregates Ltd (www.lafarge.com) processed some 57,000 tonnes of sea dredged ballast landed by **Northwood (Fareham) Ltd** (www.westminsterdredging.co.uk) who also landed a further 25,000 tonnes at their own **Upper Wharf** in **Fareham**.

- d) In addition to this, over 340,000 tonnes of sea-dredged ballast was landed by **Kendall Bros. Ltd** at their **Eastern Road Wharf** and forwarded by road to various construction sites within the UK.
- e) Meanwhile former Royal Navy ships and submarines and other boats surplus to requirement are bought and broken for scrap by **Pounds Shipowners and Shipbreakers Ltd** at **Tipner Wharf**.
- f) The British ship owner and operator **John H Whitaker (Tankers) Ltd** has two bunker tankers servicing vessels at the Commercial Port on a daily basis. The 4,200 tonne **Whitchallenger** (2002) and the 2,850 tonne **Jayne W** (1996) provide fuel supplies (from marine gas oil to heavy fuel oil) around the clock on behalf of ExxonMobil. In 2005 more than 1,000 bunker operations were conducted. *e-mail - AJ@JHW-SOTON.CO.UK*
- g) **North Quay** offers additional facilities to the Port as a lay-by berth for the coastal tankers and bunker barges. **CPL Ltd** (www.cplpetroleum.co.uk) operates the small oil terminal at the eastern end of North Quay, **CPL Ltd** also supplies Marine Fuel and Oil for all marine vessels from two points within the Harbour boundaries – Camber Docks and Fountain Lake.

IMPORTS 2006

COMMODITY	ANNUAL TONNAGE	NO. OF SHIPS	PORT OF ORIGIN	AREA CODE	LOADING BERTH	AGENT/STEVEDORE
Ballast	342,794	not declared	Sea	OP	Kendalls	Kendall Bros. Ltd.
	56,894	91	Sea	OP	Tipner	Northwood (Fareham) Ltd
	399,688	91				
Fruit	159,024	46	Belize	CA	AJQ	MMD (Shipping Services) Ltd
	48,972	6	Belize	CA	Flathouse	MMD (Shipping Services) Ltd
	7,539	6	Agadir	NA	AJQ	MMD (Shipping Services) Ltd
	18,231	16	Agadir	NA	Flathouse	MMD (Shipping Services) Ltd
	5,370	5	Casablanca	NA	AJQ	MMD (Shipping Services) Ltd
	14,762	10	Casablanca	NA	Flathouse	MMD (Shipping Services) Ltd
	4,037	5	New Zealand	NZ	Flathouse	MMD (Shipping Services) Ltd
	15,288	14	Dakar	WA	AJQ	MMD (Shipping Services) Ltd
	96,407	42	Dakar	WA	Flathouse	MMD (Shipping Services) Ltd
	7,279	4	Tema	WA	AJQ	MMD (Shipping Services) Ltd
	10,163	6	Tema	WA	Flathouse	MMD (Shipping Services) Ltd
	96,198	7	Dominican Rep	WI	AJQ	MMD (Shipping Services) Ltd
	3,939	2	Dominican Rep	WI	Flathouse	MMD (Shipping Services) Ltd
	120,452	49	Jamaica	WI	AJQ	MMD (Shipping Services) Ltd
	4,174	2	Jamaica	WI	Flathouse	MMD (Shipping Services) Ltd
	133,826	47	Windward Isles	WI	AJQ	MMD (Shipping Services) Ltd
7,194	4	Windward Isles	WI	Flathouse	MMD (Shipping Services) Ltd	
	752,855	271				
General inc Empties	6		Cowes	CW	Camber	Ken Brown Boats Ltd
	1,872		Guernsey	CW	AJQ	MMD (Shipping Services) Ltd
	1,433		Guernsey	CW	Flathouse	MMD (Shipping Services) Ltd
	1,271		Jersey	CW	AJQ	MMD (Shipping Services) Ltd
	1,051		Jersey	CW	Flathouse	MMD (Shipping Services) Ltd
	2,154		Windward Isles	WI	AJQ	MMD (Shipping Services) Ltd
	7,787	-				
Steel	1	1	Cowes	CW	Camber	Ken Brown Boats Ltd
	3	2	Fareham	CW	Camber	Ken Brown Boats Ltd
	3	2	Southampton	CW	Camber	Ken Brown Boats Ltd
	7	5				
Vehicles	35		Guernsey	CW	AJQ	MMD (Shipping Services) Ltd
	14		Guernsey	CW	Flathouse	MMD (Shipping Services) Ltd
	37		Jersey	CW	AJQ	MMD (Shipping Services) Ltd
	14		Jersey	CW	Flathouse	MMD (Shipping Services) Ltd
	4		Southampton	CW	Camber	Ken Brown Boats Ltd
	104	-				
TOTAL IMPORTS	1,160,441	367				

Export

Index

EXPORTS 2006

COMMODITY	ANNUAL TONNAGE	NO. OF SHIPS	DESTINATION	AREA CODE	LOADING BERTH	AGENT/STEVEDORE
Building Materials	5,068		Guernsey	CW	AJQ	MMD (Shipping Services) Ltd
	6,053		Guernsey	CW	Flathouse	MMD (Shipping Services) Ltd
	10,589		Jersey	CW	AJQ	MMD (Shipping Services) Ltd
	14,543		Jersey	CW	Flathouse	MMD (Shipping Services) Ltd
	36,253	-				
Fertiliser	186		Jersey	CW	AJQ	MMD (Shipping Services) Ltd
	188		Jersey	CW	Flathouse	MMD (Shipping Services) Ltd
	374	-				
General inc Empties	8,344		Belize	CA	AJQ	MMD (Shipping Services) Ltd
	1,294		Belize	CA	Flathouse	MMD (Shipping Services) Ltd
	7	2	Cowes	CW	Camber	Ken Brown Boats Ltd
	9,444	2	Guernsey	CW	AJQ	MMD (Shipping Services) Ltd
	11,996	7	Guernsey	CW	Flathouse	MMD (Shipping Services) Ltd
	19,929	62	Jersey	CW	AJQ	MMD (Shipping Services) Ltd
	23,373	79	Jersey	CW	Flathouse	MMD (Shipping Services) Ltd
	4,635		Agadir	NA	Flathouse	MMD (Shipping Services) Ltd
	86		Casablanca	NA	AJQ	MMD (Shipping Services) Ltd
	339		New Zealand	NZ	Flathouse	MMD (Shipping Services) Ltd
	320		Dakar	WA	AJQ	MMD (Shipping Services) Ltd
	1,555		Dakar	WA	Flathouse	MMD (Shipping Services) Ltd
	116		Tema	WA	AJQ	MMD (Shipping Services) Ltd
	184		Tema	WA	Flathouse	MMD (Shipping Services) Ltd
	14,327		Jamaica	WI	AJQ	MMD (Shipping Services) Ltd
	367		Jamaica	WI	Flathouse	MMD (Shipping Services) Ltd
	70,790		Windward Isles	WI	AJQ	MMD (Shipping Services) Ltd
5,791		Windward Isles	WI	Flathouse	MMD (Shipping Services) Ltd	
172,897	152					
Steel	44	5	Cowes	CW	Camber	Ken Brown Boats Ltd
	723		Guernsey	CW	AJQ	MMD (Shipping Services) Ltd
	850		Guernsey	CW	Flathouse	MMD (Shipping Services) Ltd
	1,081		Jersey	CW	AJQ	MMD (Shipping Services) Ltd
	1,487		Jersey	CW	Flathouse	MMD (Shipping Services) Ltd
	42	4	Southampton	CW	Camber	Ken Brown Boats Ltd
4,227	9					
Timber	1,757		Guernsey	CW	AJQ	MMD (Shipping Services) Ltd
	1,718		Guernsey	CW	Flathouse	MMD (Shipping Services) Ltd
	3,067		Jersey	CW	AJQ	MMD (Shipping Services) Ltd
	3,106		Jersey	CW	Flathouse	MMD (Shipping Services) Ltd
	9,648	-				
Vehicles	31		Jamaica	WI	AJQ	MMD (Shipping Services) Ltd
	31	-				
TOTAL EXPORTS	223,430	161				
IMPORTS	1,160,441	367				
OVERALL TOTAL	1,383,871	528				

AREA CODES:

CW = Coastwise
 NA = North Africa
 CA = Central America
 OP = One Port

NZ = New Zealand
 SAM = South America
 NE = North Europe
 WI = West Indies

[Summary](#)

[Index](#)

SUMMARY OF IMPORTS BY COMMODITY

Excluding Unitised Traffic RO/RO Trade CFP - 1997 - 2006

COMMODITY	1997	1998	1999	2000	2001	2002	2003	2004	2005	2006
Ballast	390,379	365,278	369,953	456,608	383,495	351,440	320,539	333,182	315,050	399,688
Building Materials										
Coal										
Empties	2,595	2,552	2,174	1,970	2,008	2,199	2,419	2,633	2,472	2,104
Fertiliser										
Fruit	232,470	225,613	145,215	163,318	165,599	402,593	452,680	529,883	697,942	752,855
Fuel Oil	24,863	14,744	15,956	11,021	4,757	1,949				
General	1,626	1,733	2,324	4,205	3,287	3,614	2,946	1,584	2,266	5,683
Grain										
Miscellaneous										
Oil										
Potatoes										
Steel		773	2,159	160		34		75	3	7
Timber										
Tomatoes										
Vegetables										
Vehicles	262	202	141	145	199	63	141	148	153	104
Total Tonnages	652,195	610,895	537,922	637,427	559,345	761,892	778,725	867,505	1,017,886	1,160,441

SUMMARY OF EXPORTS BY COMMODITY

Excluding Unitised Traffic RO/RO Trade CFP - 1997-2006

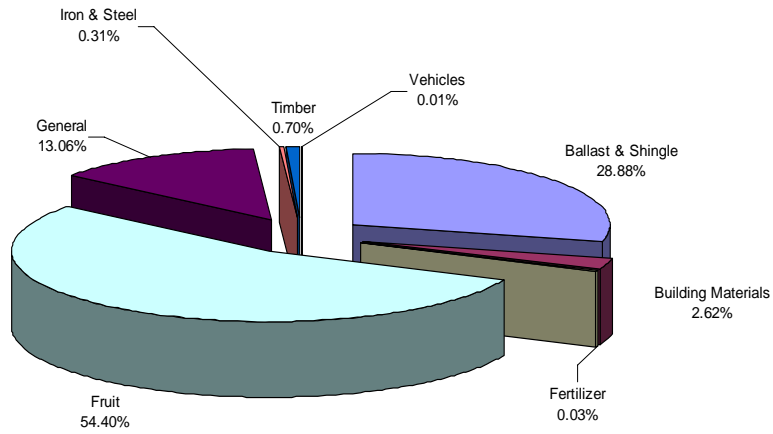
COMMODITY	1997	1998	1999	2000	2001	2002	2003	2004	2005	2006
Ballast		2,318	651					272	18	
Building Materials	24,849	29,727	27,564	24,104	22,926	29,441	29,184	31,192	34,247	36,253
Coal										
Fertiliser	865	1,707	2,279	1,834	962	537	542	851	777	374
Fuel Oil			615							
Fruit		1,200								
General	60,138	67,166	63,927	88,732	95,904	120,579	156,879	168,216	172,805	172,897
Grain										
Miscellaneous										
Oil										
Steel	4,491	4,927	3,813	3,991	3,487	3,764	2,934	4,054	4,108	4,227
Timber	4,243	7,001	7,024	8,419	9,918	9,465	11,014	10,404	12,117	9,648
Vehicles							27			31
Total Tonnages	94,586	114,046	105,873	127,080	133,197	163,786	200,580	214,989	224,072	223,430

Total Commodities	746,781	724,941	643,795	764,507	692,542	925,678	979,305	1,082,494	1,241,958	1,383,871
--------------------------	----------------	----------------	----------------	----------------	----------------	----------------	----------------	------------------	------------------	------------------

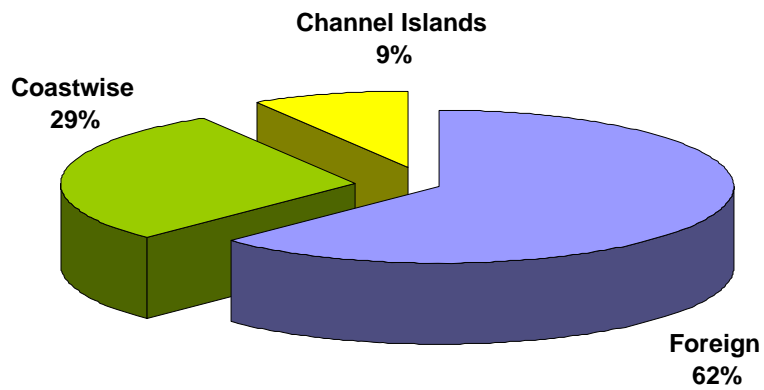
Foreign

Index

Commodity Totals



Principal Trading Areas 2006



FOREIGN TONNAGES 2001 - 2006

Excluding Unitised Traffic RO/RO Trade CFP

2001

AREA	IMPORT	EXPORT	TOTAL	%
North Africa	41,422.0		41,422	21.8%
South Africa			0	0.0%
Iberia			0	0.0%
North Europe	1,000	1,476	2,476	1.3%
West Indies	73,416	20,067	93,483	49.3%
Mediterranean	979		979	0.5%
Cent & Sth America	51,202	79	51,281	27.0%
Total	168,019	21,622	189,641	100%

2002

IMPORT	EXPORT	TOTAL	%
43,908	88	43,996	9.7%
		0	0.0%
8,969	938	9,907	2.2%
	70	70	0.0%
222,848	43,100	265,948	58.5%
		0	0.0%
129,134	5,682	134,816	29.6%
404,859	49,878	454,737	100%

2003

AREA	IMPORT	EXPORT	TOTAL	%
North Africa	62,516	2,831	65,347	12.1%
South Africa	6,217	40	6,257	1.2%
New Zealand	8,232	824	9,056	1.7%
North Europe			0	0.0%
West Indies	236,756	78,010	314,766	58.1%
Mediterranean			0	0.0%
Cent & Sth America	140,604	6,022	146,626	27.1%
Total	454,325	87,727	542,052	100%

2004

IMPORT	EXPORT	TOTAL	%
57,878	615	58,493	9.3%
		0	0.0%
6,981	1,204	8,185	1.3%
		0	0.0%
235,663	86,337	322,000	51.4%
		0	0.0%
229,361	8,740	238,101	38.0%
529,883	96,896	626,779	100%

2005

AREA	IMPORT	EXPORT	TOTAL	%
North Africa	46,493	136	46,629	5.8%
West Africa	135,302	2,656	137,958	17.2%
New Zealand	7,150	331	7,481	0.9%
North Europe		171	171	0.0%
West Indies	245,412	89,134	334,546	41.8%
Mediterranean			0	0.0%
Cent & Sth America	263,585	10,581	274,166	34.2%
Total	697,942	103,009	800,951	100%

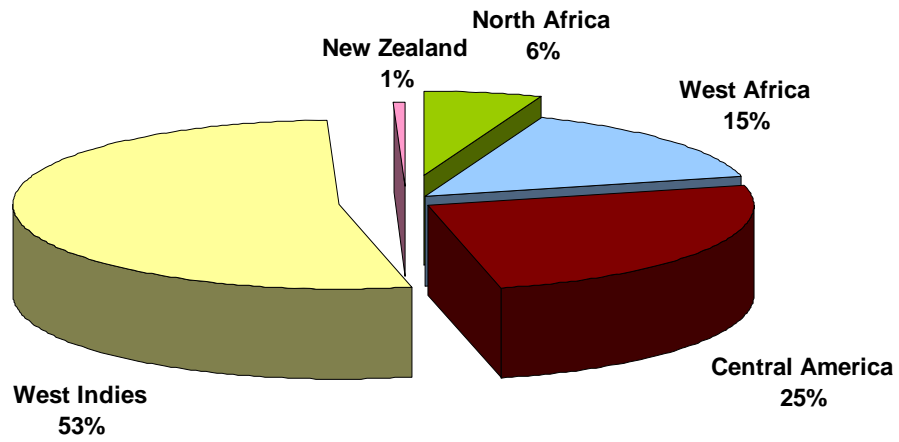
2006

IMPORT	EXPORT	TOTAL	%
45,902	4,721	50,623	5.9%
129,137	2,175	131,312	15.2%
4,037	339	4,376	0.5%
		0	0.0%
367,937	91,306	459,243	53.2%
		0	0.0%
207,996	9,638	217,634	25.2%
755,009	108,179	863,188	100%

Coastwise

Index

Foreign Tonnage 2006



COASTWISE TONNAGES

Excluding Unitised Traffic RO/RO Trade CFP

2006

AREA	IMPORTS	EXPORTS	TOTALS	%
Sea	399,688	0	399,688	76.8%
UK	17	93	110	0.0%
Jersey	2,373	77,549	79,922	15.3%
Guernsey	3,354	37,609	40,963	7.9%
Total Tonnages	405,432	115,251	520,683	100%

Channel Islands

Index

CHANNEL ISLAND TONNAGES

Excluding Unitised Traffic RO/RO Trade CFP

2006

Imports

COMMODITY	JERSEY	GUERNSEY	TOTAL	%
General	2,322	3,305	5,627	98.3%
Vehicles	51	49	100	1.7%
Total Tonnages	2,373	3,354	5,727	100%

Exports

COMMODITY	JERSEY	GUERNSEY	TOTAL	%
Building Materials	25,132	11,121	36,253	31.5%
Fertilizer	374	0	374	0.7%
General	43,302	21,440	64,742	56.2%
Steel	2,568	1,573	4,141	3.6%
Timber	6,173	3,475	9,648	8.4%
Total Tonnages	77,549	37,609	115,158	100%

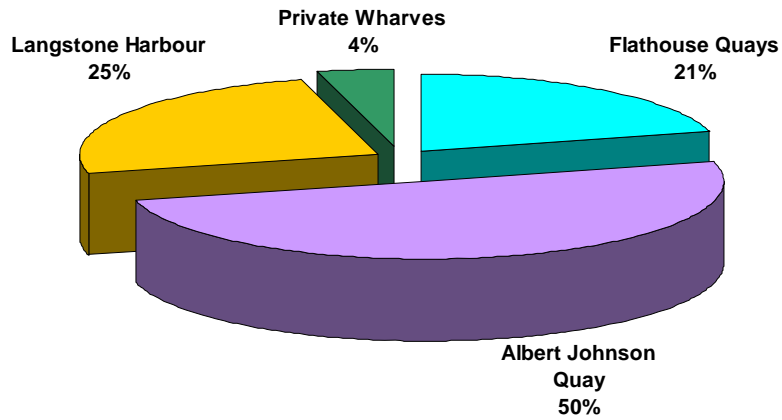
Imports and Exports 2000 - 2006

	2000	2001	2002	2003	2004	2005	2006
Jersey	79,663	82,352	79,213	75,262	78,237	84,462	79,922
Guernsey	30,529	32,222	38,304	41,408	43,433	41,443	40,963
Total	110,192	114,574	117,517	116,670	121,670	125,905	120,885

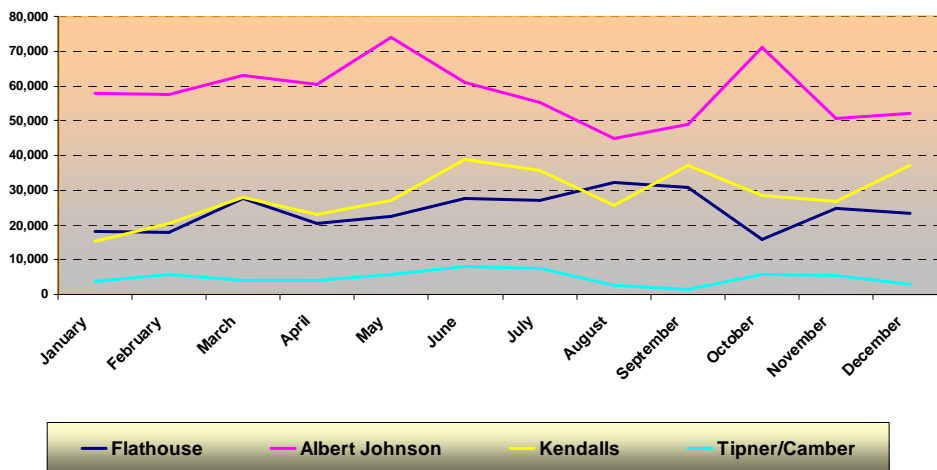
Tonnage by Quay

Index

Docks Tonnages 2006



Monthly Tonnages 2006



SUMMARY OF TOTAL TONNAGES BY QUAY 1999 - 2006

Excluding Unitised RO/RO Trade - CFP

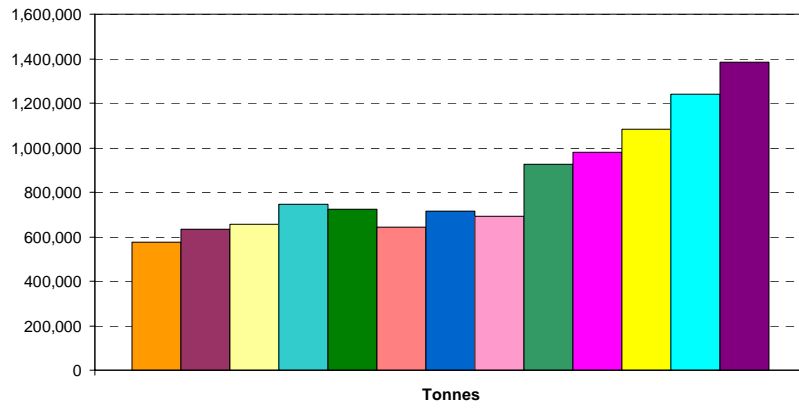
Dock	1999	%	2000	%	2001	%	2002	%	2003	%	2004	%	2005	%	2006	%
Flathouse	93,171	14.5%	132,871	18.5%	162,852	23.5%	216,093	23.3%	229,891	23.5%	227,184	21.0%	290,403	23.4%	287,870	20.8%
Albert Johnson Quay	161,290	25.1%	163,847	22.9%	141,363	20.4%	356,161	38.5%	428,831	43.8%	521,300	48.2%	636,453	51.2%	696,203	50.3%
Private Wharves	86,948	13.5%	317,609	44.3%	57,266	8.3%	60,249	6.5%	33,902	3.5%	29,516	2.7%	47,256	3.8%	57,004	4.1%
Langstone	302,386	47.0%	102,489	14.3%	331,061	47.8%	293,175	31.7%	286,681	29.3%	304,494	28.1%	267,846	21.6%	342,794	24.8%
Total	643,795	100%	716,816	100%	692,542	100%	925,678	100%	979,305	100%	1,082,494	100%	1,241,958	100%	1,383,871	100%

Distribution	1999	%	2000	%	2001	%	2002	%	2002	%	2004	%	2005	%	2006	%
Foreign	167,120	26.0%	197,547	27.6%	189,641	27.4%	454,737	49.1%	454,737	49.1%	626,779	57.9%	800,951	64.5%	863,188	65.2%
Coastwise	372,923	57.9%	409,077	57.1%	388,327	56.1%	353,424	38.2%	353,424	38.2%	334,045	30.9%	315,102	25.4%	339,798	25.7%
Channel Islands	103,752	16.1%	110,192	15.4%	114,574	16.5%	117,517	12.7%	117,517	12.7%	121,670	11.2%	125,905	10.1%	120,885	9.1%
Total	643,795	100%	716,816	100%	692,542	100%	925,678	100%	925,678	100%	1,082,494	100%	1,241,958	100%	1,323,871	100%

Roll on/Roll Off

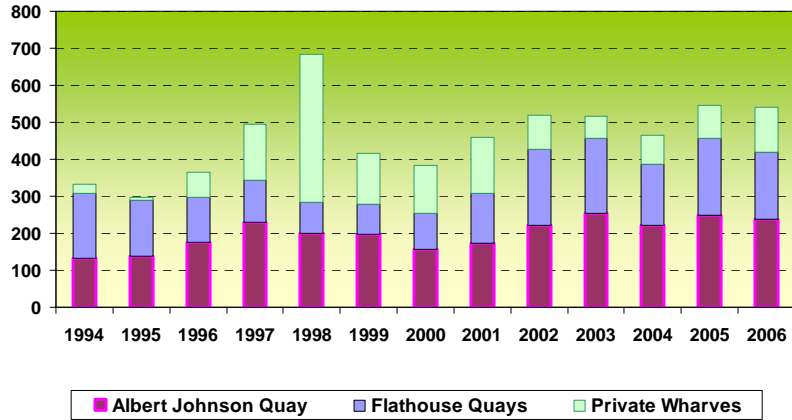
Index

Tonnage Trends 1994-2006

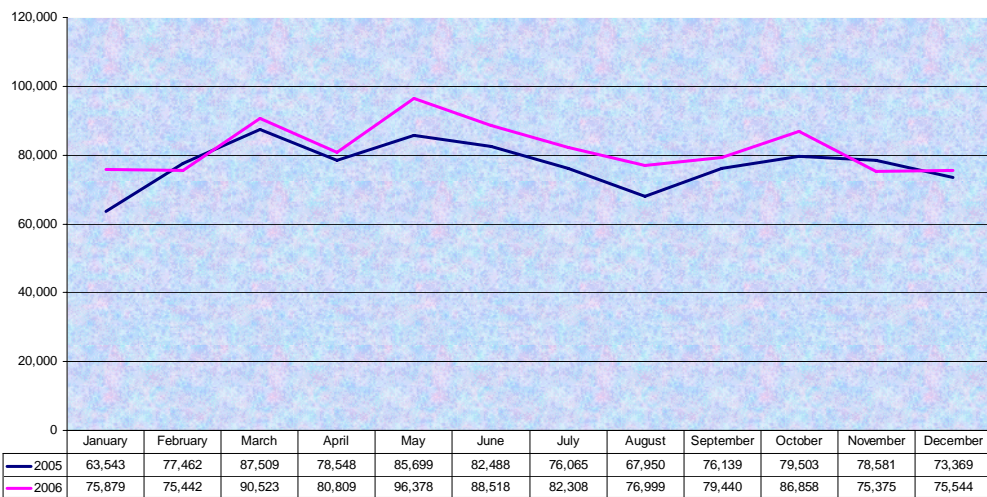


1994 1995 1996 1997 1998 1999 2000 2001 2002 2003 2004
2005 2006

Commercial Shipping Movements



Comparison of Cargo Landed AJQ/Flathouse 2005 - 2006



Continental Ferry Port

The Continental Ferry Port, situated at the end of the M275, was opened in June 1976. Initially providing two cross channel companies with an operating area of approximately 4 acres of land reclaimed from Portsmouth Harbour and a single linkspan from which a summer only passenger service to Cherbourg and St Malo was planned. However, before the year was out an all year round freight service commenced in addition to the passenger services.

Towards the end of 1977, a second linkspan was installed, providing a third shipping company with the facility to operate a daily passenger/freight service to the Channel Islands (both Jersey and Guernsey).

Additional reclamation of land from the Harbour and the purchase of land to the land ward side of the Ferry Port enabled the City Council to keep abreast of the increase in demand and the site currently occupies some 17.6 hectares (44 acres). With the opening of a new exit in July 1998, egress from the Port for most car drivers is directly onto the M275.

Continued development of the Port has seen the installation of a new passenger gangway on number 3 berth, refitting of linkspan and associated machinery number on number 4 berth.

A project aimed at reducing the numbers of heavy goods vehicles on the roads by bringing containers for export to Portsmouth by rail is now entering its final stages with the first train of export containers due mid 2007.

Investment within the Passenger Terminal area includes a new passenger information service, giving travellers up to the minute updates on all travel routes and offering an advertising opportunity to businesses of all sizes with rates starting from just £2.52 per day, email info@portsmouth-port.co.uk for further details.

During summer 2003 a multi-storey car park with the capacity for 516 cars was opened. Arranged over five floors, there is a dedicated space for motorcycles and an electronic car service to transport disabled passengers to and from the Terminal Building. The top floor is reserved for staff employed by the Port Authority and companies serving the Port.

Operated by **Central Parking Systems** and with the CCTV manned 24 hours per day this facility allows foot passengers travelling from Portsmouth safe storage for their vehicle during their stay on the Continent, whether that is just a day trip or a more protracted stay.

In the event of a problem on their return, **Central Parking System** staff are on hand with facilities ranging from a battery pack to jump start a flat battery, to re-inflate a flat tyre or assistance if required to change a wheel.

Busiest times tend to correspond with the arrival/departure of the Bilbao service, with the average length of stay being 3 days.

Condor Ferries (www.condorferries.co.uk) offers a twice daily all year round conventional service linking Portsmouth with the Channel Islands of Guernsey and Jersey.

The passenger service departs Portsmouth each morning whilst a freight service with limited driver accommodation departs each evening.

It is regarded as a lifeline service and apart from transporting the commodities that are required to sustain the population of the Islands it also provides the method of shipping the Islands produce back to the UK.

Amongst this produce are fresh cut flowers, tomatoes, salad, and vegetables including the Jersey Royal Potato crop, which usually amounts to about 35,000 tonnes per annum.

French links are provided to St Malo each Friday whilst a weekly service to Cherbourg is operated on a Sunday throughout August and September with the caravan enthusiast in mind.

Brittany Ferries (www.brittany-ferries.co.uk) has significantly increased both the quality and capacity of its car ferry services from Portsmouth giving customers a broader choice of sailing times and destinations.

The popularity of the **Portsmouth** to **Caen** route was given a boost by the introduction of **MV Mont St Michel** in 2003 and **MV L'Abbe** in 2006 to compliment **MV Normandie**.

From March 2006 the **MV Normandie Express** fast craft will be operating on both the **Portsmouth** to **Caen** (Friday, Saturday & Sunday mornings) and **Portsmouth** to **Cherbourg** routes.

With the **MV Pont-Aven** operating during the winter months and **MV Bretagne** during the summer, the **Portsmouth** to **St Malo** route has an overnight sailing to France with a day sailing return.

P&O Ferries (www.poferries.com) sails from **Portsmouth** to **Bilbao**, in Spain's Basque country with the cruise ferry **Pride of Bilbao**. The ship departs every three days and is as popular for tourists heading for the far south of France as with those planning to tour Spain and Portugal.

LD Lines (www.ldlines.co.uk) a subsidiary of the French owner **LDA (Louis Dreyfus Armateurs)** opened the Le Havre to Portsmouth route with the launch of the **Norman Spirit** on 3 October 2005.

The **Norman Spirit** was refit during the summer of 2006 to offer passengers a full bed sleeper seat as well as a variety of services including seven bars and restaurants, child play areas, the Pet Travel Scheme and shopping, for its car and foot passengers as well as hauliers, coach parties and motorcyclists.

In addition some 59 cabins have been designed to provide all essential amenities for the crossing.

The **Norman Spirit's** overnight crossing and late afternoon return sailing gives day trip passengers most of the day to really experience a short taste of France.

AT Ferries sailed from **Portsmouth** to **Bilbao**, in Spain during the summer and autumn of 2006 operating on a three-day schedule.

Passenger Terminal Building and Travel Centre

Within the Continental Ferry Port buildings a range of services are available to the traveller from 6am until midnight.

Travelex UK Ltd (www.travelex.co.uk) operates the foreign exchange bureau located in the main passenger terminal.

Their friendly sales team can provide you with Euro currency together with Euro, US\$ or Sterling travellers cheques.

Swiss Francs and US\$ currency are also held in stock whilst other currencies can be pre-ordered, either through the bureau or on line, for collection within 2 working days.

Although best known for its bureaux de change in many tourist locations, **Travelex UK Ltd** can also offer a wide range of travel and financial products, mobile phone top up vouchers, stamps, travel insurance and Royal Mint gift sets to name but a few available at Portsmouth.

A bank Automated Telling Machine for convenient cash withdrawal is located adjacent to the Bureau.

A range of retail and catering facilities within the Continental Ferry Port are provided by **Aramark Ltd** (www.aramark.co.uk) Travellers can choose from “grab and go” shops or enjoy a relaxed meal in the restaurant or bar areas. Within the main Terminal Building there is a coffee shop serving **Starbucks** coffee.

Also on sale are continental style coffees, herbal teas and iced drinks. Deli style sandwiches and baguettes to go, along with pastries and paninis by **Delice de France** give a wide choice of snacks.

The **Rudmore Cellars**, on the approach road to the vehicle check in points, with its traditional pub atmosphere, family area and restaurant is an ideal group meeting point, an area to relax and eat away from the main Port area.

Meanwhile their retail shops stock a wide range of magazines and books, gifts and confectionery and health and beauty items.

Over at the **Travel Centre**, situated at the end of the vehicle collecting lanes additional services are provided for the visitor to Portsmouth Ferry Port.

European Motoring operated by **Clarendell Motoring** (www.travel-spot.co.uk) provides all the necessary motoring accessories to ensure that motorists are safe and legal, meeting all the EEC Motoring Regulations, whilst travelling on the continent.

Also within the Travel Centre, **Intercash Ltd** (www.intercashuk.com) has served an average of 40,000 customers annually since it opened at the Port in 1994.

With competitive rates and 0% Commission their friendly sales team will be happy to provide you with all your foreign currency requirements.

Aramark Ltd operates a second retail outlet carrying a wider range of products including phrase books and road atlases.

Adrenalin Advertising Ltd (email: info@[adrenalinadvertising.com](mailto:info@adrenalinadvertising.com)) maintains and markets over 30 illuminated static display panels of varying sizes throughout the port and terminal buildings. These advertising sites can be purchased for periods from 2 weeks upwards to display adverts to an audience of over 2.5m commercial and leisure travellers.

ROLL ON/ROLL OFF AND OTHER FERRY SERVICES

1998 - 2006

Isle of Wight Car Ferry

	1998	1999	2000	2001	2002	2003	2004	2005	2006
Vehicle Units	883,117	913,799	936,495	958,310	986,030	1,001,188	1,001,874	1,046,635	992,973
Passengers	2,579,270	2,616,995	2,625,764	2,662,263	2,784,898	2,796,666	2,812,393	2,760,669	2,628,510
Total	3,462,387	3,530,794	3,562,259	3,620,573	3,770,928	3,797,854	3,814,267	3,807,304	3,621,483

Isle of Wight Passenger Ferry

	1998	1999	2000	2001	2002	2003	2004	2005	2006
Passengers	1,323,770	1,408,306	1,395,722	1,469,934	1,454,647	1,471,246	1,461,733	1,459,763	1,433,319
Total	1,323,770	1,408,306	1,395,722	1,469,934	1,454,647	1,471,246	1,461,733	1,459,763	1,433,319

Isle of Wight Hovercraft Service

	1998	1999	2000	2001	2002	2003	2004	2005	2006
Passengers	684,585	706,276	691,910	720,449	703,117	765,032	763,691	756,579	779,528
Total	684,585	706,276	691,910	720,449	703,117	765,032	763,691	756,579	779,528

Gosport Ferry Passenger Service

	1998	1999	2000	2001	2002	2003	2004	2005	2006
Passengers	2,710,048	2,740,969	2,773,970	3,467,338	3,431,716	3,717,202	3,860,593	3,747,533	3,597,817
Total	2,710,048	2,740,969	2,773,970	3,467,338	3,431,716	3,717,202	3,860,593	3,747,533	3,597,817

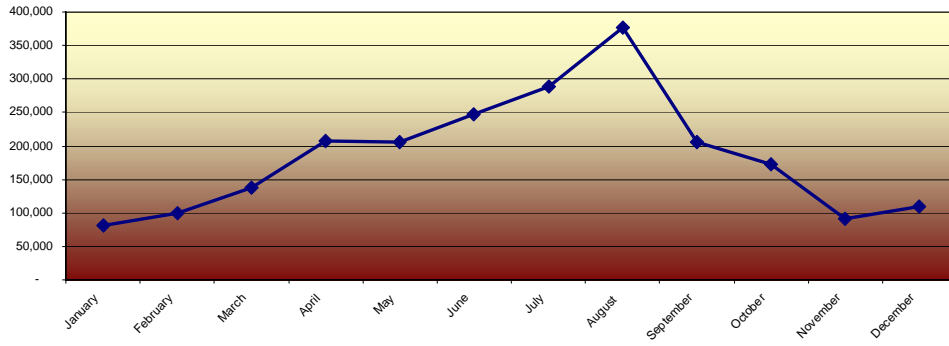
Continental and Channel Island Services

	1998	1999	2000	2001	2002	2003	2004	2005	2006
Vehicle Units	949,862	982,872	942,577	983,584	1,018,551	931,876	915,009	790,237	663,058
Freight Units	334,851	317,910	320,741	317,452	313,429	319,553	307,994	283,735	269,317
Passengers inc cruise	3,410,813	3,398,106	3,305,840	3,414,903	3,481,537	3,190,446	3,154,421	2,711,126	2,226,253
Total	4,695,526	4,698,888	4,569,158	4,715,939	4,813,517	4,441,875	4,377,424	3,785,098	3,158,628

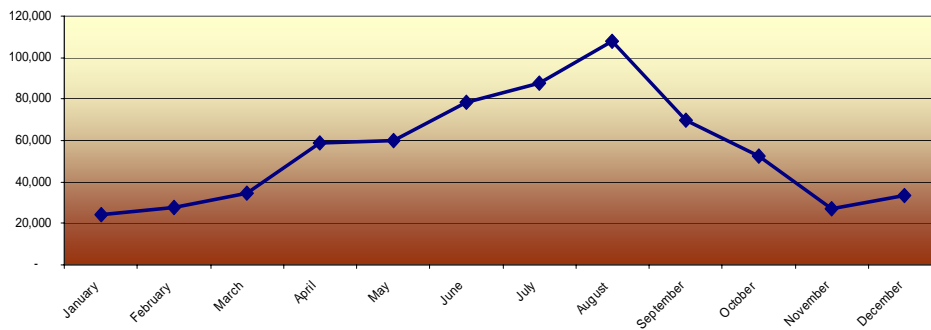
Shipping by Quay

Index

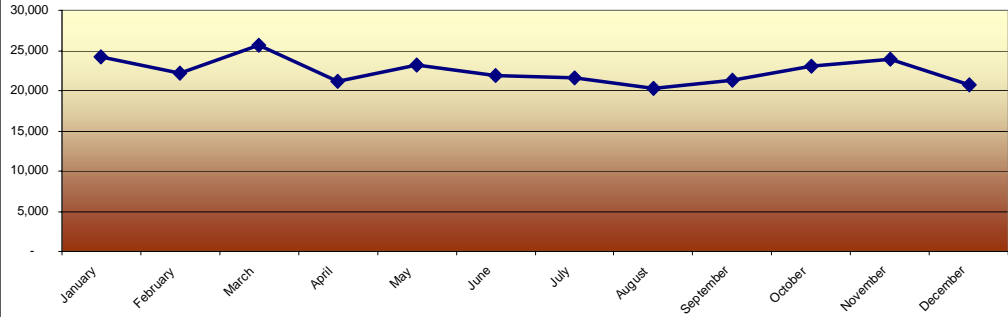
Passengers 2006



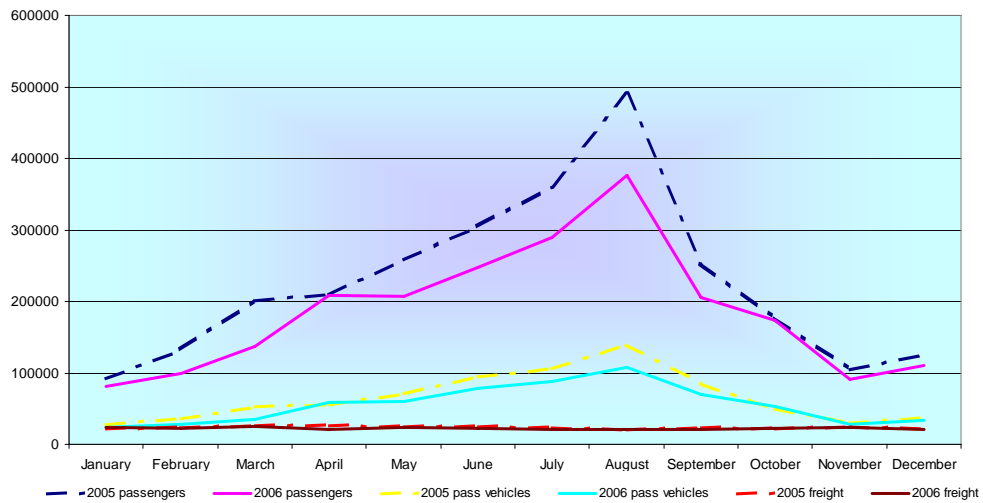
Passenger Vehicles 2006



Freight Units 2006

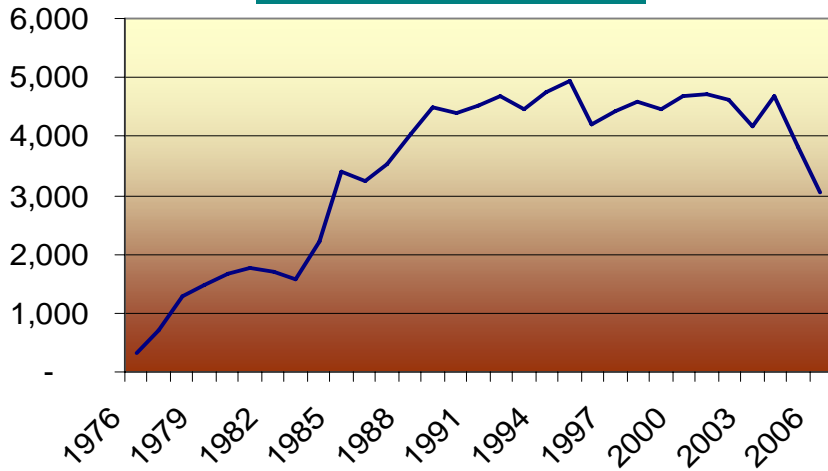


Comparison of Port Traffic 2005/2006

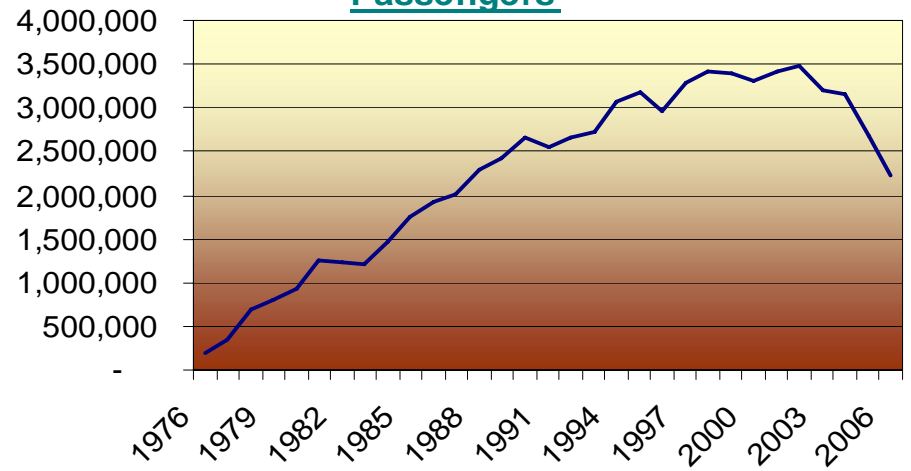


Growth 1976 to 2006

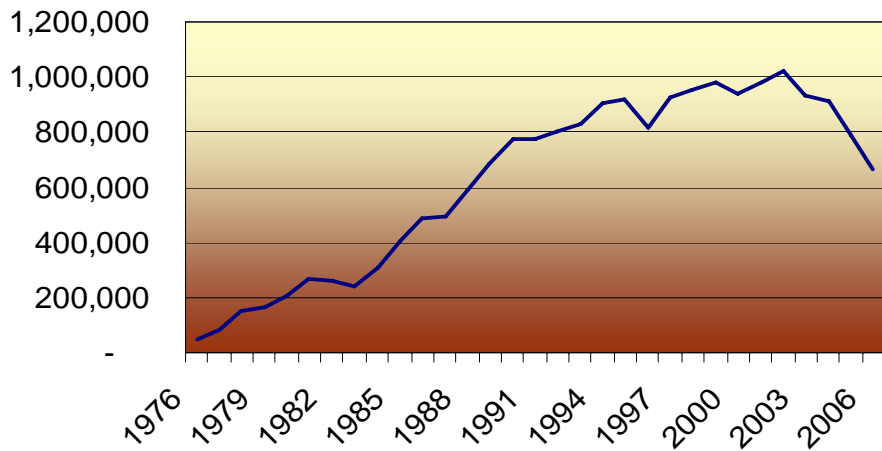
Shipping Movements



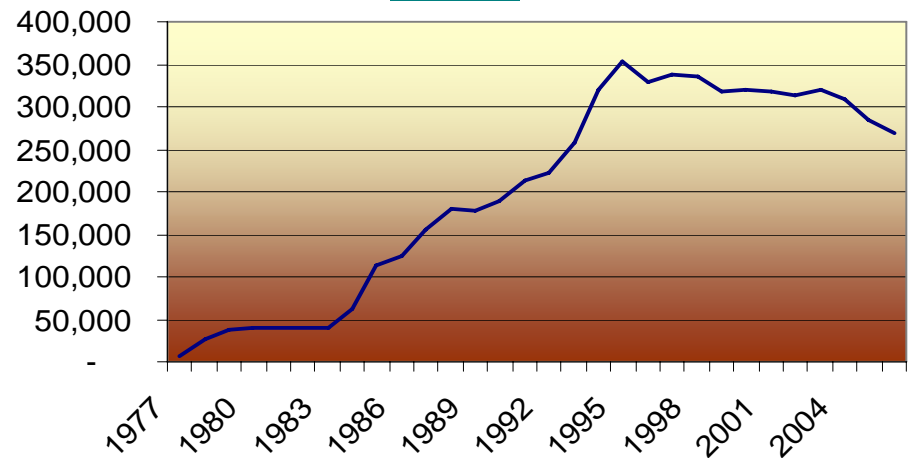
Passengers



Passenger Vehicles



Freight



SHIPPING ARRIVALS

1996 - 2006

Dock	1997	1998	1999	2000	2001	2002	2003	2004	2005	2006
Flathouse	112	85	81	97	137	240	231	266	209	183
Albert Johnson Quay	230	200	198	151	172	299	316	463	248	237
Private Wharves	399	138	129	151	91	161	139	113	89	120
I O W Car Ferry	10,781	10,961	11,694	11,558	11,940	12,449	12,523	12,472	12,336	11,207
I O W Passenger Ferry	9,818	9,756	9,866	11,542	11,507	11,432	11,590	11,659	11,602	11,563
Hovertravel	8,856	8,933	9,677	9,309	9,659	9,511	9,793	9,734	9,640	10,387
Gosport Ferry	34,400	34,400	34,400	34,400	34,744	34,744	34,744	34,744	34,744	34,744
Water Taxi (seasonal)							80	86	82	
Continental Ferry Port	4,441	4,604	4,467	4,671	4,706	4,623	4,711	6,373	5,102	4,155
Total	69,037	69,077	70,512	71,879	72,956	73,459	74,127	75,910	74,052	72,596

[Index](#)