

# Portsmouth International Port Port Statistics 2013



A service of  
**Portsmouth**  
CITY COUNCIL 

[www.portsmouth-port.co.uk](http://www.portsmouth-port.co.uk)

# PORTSMOUTH INTERNATIONAL PORT

## PORT STATISTICS 2013

### Commodities

- Imports 2013
- Exports 2013
- Summary of Imports and Exports by Commodity 2005 – 2013
- Graph of Commodity totals 2013
- Foreign Tonnage 2008 – 2013
- Graph of Foreign Tonnage 2013
- Principal Trading Areas and Coastwise Tonnage
- Graph of Principal Trading Areas
- Summary of Tonnage by Quay 2006 – 2013
- Graph of Tonnage by Quay 2013
- Graph of Monthly Tonnage 2013
- Annual Trends – Tonnage 2004-2013
- Annual Trends – Commercial Shipping
- Comparison of Cargo Landed -Commercial Wharves 2012 – 2013

### International Cruise and Ferry Port

- Roll on/Roll off and other Ferry Services
- Graphs of Monthly Throughput
  - Passengers 2013
  - Vehicles 2013
  - Freight 2013
  - Shipping 2013
- Graphs of Annual Growth 1976 – 2013
  - Passengers
  - Vehicles
  - Freight
  - Shipping
- Shipping Movements 2005 - 2013

## IMPORTS 2013

COMMODITY	ANNUAL TONNAGE	NO. OF SHIPS	PORT OF ORIGIN	AREA CODE	LOADING BERTH	AGENT/STEVEDORE
Ballast	391,809	not declared	Sea	OP	Kendalls	Kendall Bros. Ltd
	<b>391,809</b>	-				
Building Materials	4		Solent Area	CW	Camber	Ken Brown Boats Ltd
	<b>4</b>	-				
Fruit	31,035		Costa Rica	CA	AJQ	MMD (Shipping Services) Ltd
	6,678		Costa Rica	CA	AJQ	Cory Brothers Shipping Ltd
	126,902		Costa Rica	CA	Flathouse	Cory Brothers Shipping Ltd
	6,235		Manzanillo	CA	Flathouse	MMD (Shipping Services) Ltd
	12,187		Manzanillo	CA	Flathouse	Cory Brothers Shipping Ltd
	3,166		Moin	CA	AJQ	MMD (Shipping Services) Ltd
	7,020		Moin	CA	Flathouse	Cory Brothers Shipping Ltd
	5,945		Turbo	CA	AJQ	MMD (Shipping Services) Ltd
	3,204		Mersin	ME	Flathouse	MMD (Shipping Services) Ltd
	9,580		Agadir	NA	AJQ	MMD (Shipping Services) Ltd
	21,300		Agadir	NA	Flathouse	MMD (Shipping Services) Ltd
	1,964		Port Elizabeth	SA	Flathouse	Cory Brothers Shipping Ltd
	382		Port Elizabeth	SA	Flathouse	MMD (Shipping Services) Ltd
	185,749		Columbia	SAM	AJQ	MMD (Shipping Services) Ltd
	7,620		Columbia	SAM	Flathouse	MMD (Shipping Services) Ltd
	5,849		Columbia	SAM	Flathouse	Cory Brothers Shipping Ltd
	1,671		Equador	SAM	Flathouse	MMD (Shipping Services) Ltd
	20,308		Santa Marta	SAM	AJQ	MMD (Shipping Services) Ltd
	4,478		Windward Isles	WI	AJQ	Cory Brothers Shipping Ltd
	240,949		Windward Isles	WI	AJQ	MMD (Shipping Services) Ltd
8,428		Windward Isles	WI	Flathouse	MMD (Shipping Services) Ltd	
<b>710,650</b>	-					
General	6		Solent Area	CW	Camber	Ken Brown Boats Ltd
	<b>6</b>	-				
Steel	14		Solent Area	CW	Camber	Ken Brown Boats Ltd
	<b>14</b>	-				
Vehicles	60		Solent Area	CW	Camber	Ken Brown Boats Ltd
	<b>60</b>	-				
TOTAL IMPORTS	<b>1,102,543</b>	-	In addition to the above 8,659 empty containers were shipped into Portsmouth during 2013			

Export

Index

## EXPORTS 2013

COMMODITY	ANNUAL TONNAGE	NO. OF SHIPS	DESTINATION	AREA CODE	LOADING BERTH	AGENT/STEVEDORE
Building Materials	3		Solent Area	CW	Camber	Ken Brown Boats Ltd
	<b>3</b>	-				
General	462		Costa Rica	CA	AJQ	MMD (Shipping Services) Ltd
	198		Costa Rica	CA	Flathouse	Cory Brothers Shipping Ltd
	22		Manzanillo	CA	Flathouse	Cory Brothers Shipping Ltd
	396		Moin	CA	AJQ	MMD (Shipping Services) Ltd
	132		Turbo	CA	AJQ	MMD (Shipping Services) Ltd
	8		Solent Area	CW	Camber	Ken Brown Boats Ltd
	5,306		Columbia	SAM	AJQ	MMD (Shipping Services) Ltd
	44		Columbia	SAM	Flathouse	MMD (Shipping Services) Ltd
	132		Santa Marta	SAM	AJQ	MMD (Shipping Services) Ltd
	62,879		Windward Isles	WI	AJQ	MMD (Shipping Services) Ltd
	8,451		Windward Isles	WI	Flathouse	MMD (Shipping Services) Ltd
	<b>78,030</b>	-				
Steel	95		Solent Area	CW	Camber	Ken Brown Boats Ltd
	<b>95</b>	-				
Vehicles	7		Solent Area	CW	Camber	Ken Brown Boats Ltd
	<b>7</b>	-				
TOTAL EXPORTS	<b>78,135</b>	-	In addition to the above 8,985 empty containers were shipped out of Portsmouth during 2013			
IMPORTS	<b>1,102,543</b>	-				
<b>OVERALL TOTAL</b>	<b>1,180,678</b>	-				

**AREA CODES:**

CA = Central America  
 CW = Coastwise  
 ME = Middle East  
 NA = North Africa  
 NE = Northern Europe

OP = One Port  
 SA = South Africa  
 SAM = South America  
 WI = West Indies

**Summary**

**Index**

## SUMMARY OF IMPORTS BY COMMODITY

### Excluding Unitised Traffic RO/RO Trade CFP - 2005 - 2013

COMMODITY	2005	2006	2007	2008	2009	2010	2011	2012	2013
Ballast	315,050	399,688	413,054	334,662	266,374	216,891	258,919	272,187	391,809
Building Materials							248		4
Empties	2,472	2,104	1,324	1,450					8,985
			<i>Units from 2013</i>						
Fruit	697,942	752,855	468,287	536,082	669,400	611,132	678,413	606,605	710,650
General	2,266	5,683	9,585	5,329	196	159	151	320	6
Steel	3	7			19	36	136	26	14
Timber						46	58	89	
Vehicles	153	104	436	378	3	60	55	130	60
<b>Total Tonnages</b>	<b>1,017,886</b>	<b>1,160,441</b>	<b>892,686</b>	<b>877,901</b>	<b>935,992</b>	<b>828,324</b>	<b>937,980</b>	<b>879,357</b>	<b>1,111,528</b>

## SUMMARY OF EXPORTS BY COMMODITY

### Excluding Unitised Traffic RO/RO Trade CFP - 2005 - 2013

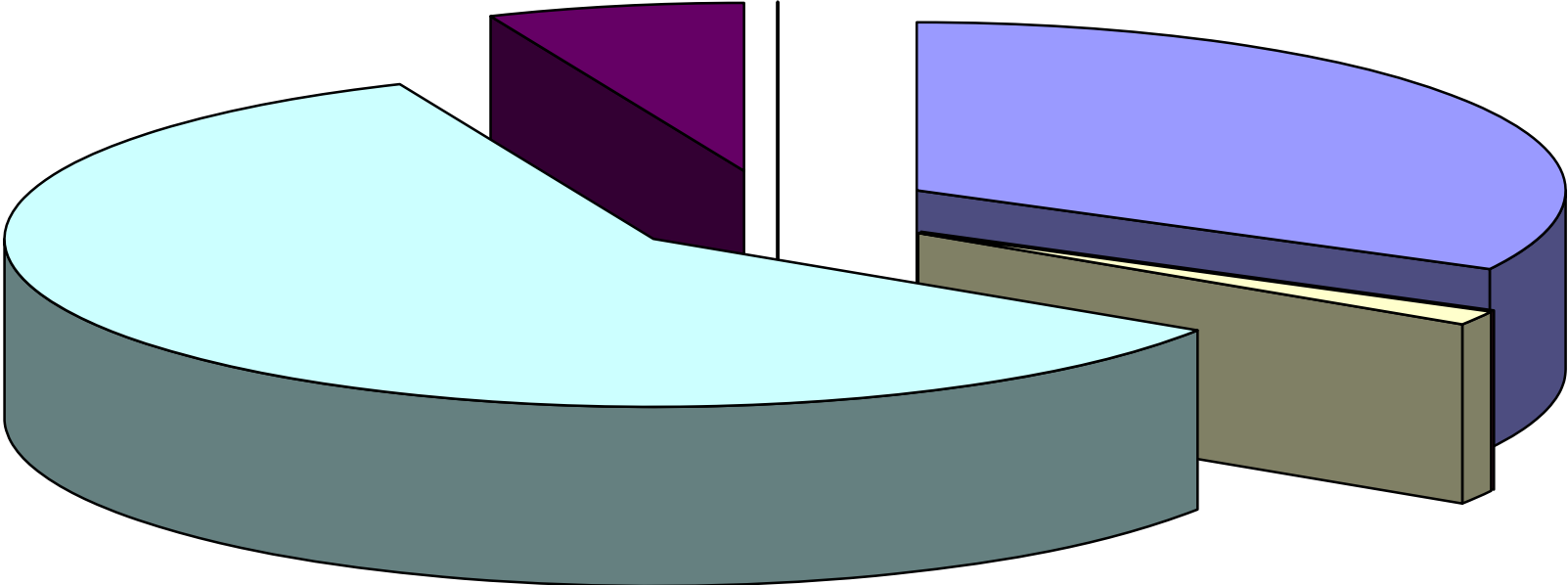
COMMODITY	2005	2006	2007	2008	2009	2010	2011	2012	2013
Ballast	18				93				0
Building Materials	34,247	36,253	22,471	24,937	1,110	485	85	7	3
Empties									8,659
			<i>Units from 2013</i>						
Fertiliser	777	374	2,470	3,821					
General	172,805	172,897	194,777	212,598	114,961	84,109	59,324	45,525	78,030
Steel	4,108	4,227	2,334	2,773	243	173	1,108	54	95
Timber	12,117	9,648	8,824	10,046	17	19	4		
Vehicles		31			22	60	80	163	7
<b>Total Tonnages</b>	<b>224,072</b>	<b>223,430</b>	<b>230,876</b>	<b>254,175</b>	<b>116,446</b>	<b>84,846</b>	<b>60,601</b>	<b>45,749</b>	<b>86,794</b>

<b>Total Commodities</b>	<b>1,241,958</b>	<b>1,383,871</b>	<b>1,123,562</b>	<b>1,132,076</b>	<b>1,052,438</b>	<b>913,170</b>	<b>998,581</b>	<b>925,106</b>	<b>1,198,322</b>
--------------------------	------------------	------------------	------------------	------------------	------------------	----------------	----------------	----------------	------------------

Foreign

Index

# Commodity Totals 2013



■ Ballast & Shingle	■ Building Materials	■ Empties - units	■ Fruit
■ General	■ Iron & Steel	■ Timber	■ Vehicles

**FOREIGN TONNAGES 2008 - 2013**  
**Excluding Unitised Traffic RO/RO Trade CFP**

**2008**

AREA	IMPORT	EXPORT	TOTAL	%
Cent & Sth America	277,319	24,293	301,612	44.9%
Middle East			0	0.0%
New Zealand			0	0.0%
North Africa	36,501	44,067	80,568	12.0%
North Europe			0	0.0%
South Africa			0	0.0%
West Indies	223,852	65,954	289,806	43.1%
<b>Total</b>	<b>537,672</b>	<b>134,314</b>	<b>671,986</b>	<b>100%</b>

**2009**

IMPORT	EXPORT	TOTAL	%
374,281	25,095	399,376	50.9%
		-	0.0%
		-	0.0%
33,641	19,246	52,887	6.7%
90		90	0.0%
		-	0.0%
261,478	70,543	332,021	42.3%
<b>669,490</b>	<b>114,884</b>	<b>784,374</b>	<b>100%</b>

**2010**

AREA	IMPORT	EXPORT	TOTAL	%
Cent & Sth America	326,661	19,429	346,090	49.8%
Middle East			-	0.0%
North Africa	20,000	3,962	23,962	3.4%
North Europe		140	140	0.0%
South Africa			-	0.0%
West Africa			-	0.0%
West Indies	264,471	60,532	325,003	46.7%
<b>Total</b>	<b>611,132</b>	<b>84,063</b>	<b>695,195</b>	<b>100%</b>

**2011**

IMPORT	EXPORT	TOTAL	%
396,555	16,224	412,779	55.9%
		-	0.0%
37,710	0	37,710	5.1%
137		137	0.0%
		-	0.0%
		-	0.0%
244,148	43,067	287,215	38.9%
<b>678,550</b>	<b>59,291</b>	<b>737,841</b>	<b>100%</b>

**2012**

AREA	IMPORT	EXPORT	TOTAL	%
Cent & Sth America	327,376	5,664	333,040	51.1%
Middle East			-	0.0%
North Africa	38,870		38,870	6.0%
North Europe		100	100	0.0%
South Africa			-	0.0%
West Africa			-	0.0%
West Indies	240,359	39,604	279,963	42.9%
<b>Total</b>	<b>606,605</b>	<b>45,368</b>	<b>651,973</b>	<b>100%</b>

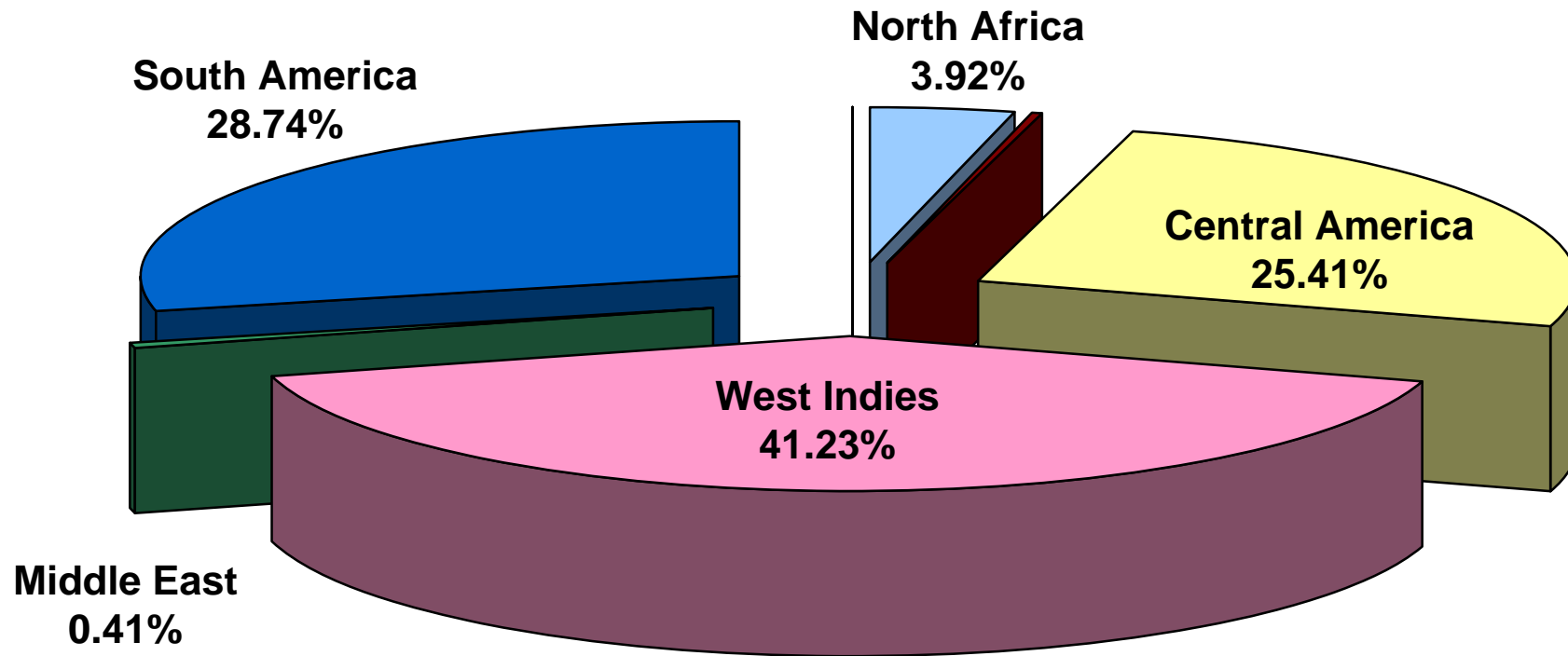
**2013**

IMPORT	EXPORT	TOTAL	%
420,365	6,692	427,057	54.1%
3,204		3,204	0.4%
30,880		30,880	3.9%
		-	0.0%
2,346		2,346	0.3%
		-	0.0%
253,855	71,330	325,185	41.2%
<b>710,650</b>	<b>78,022</b>	<b>788,672</b>	<b>100%</b>

Coastwise

Index

# Foreign Tonnage 2013





## PRINCIPAL TRADING AREAS

2013

AREA	IMPORTS	EXPORTS	TOTALS	%
Foreign	710,650	78,022	788,672	66.8%
Coastwise	391,893	113	392,006	33.2%
<b>Total Tonnages</b>	<b>1,102,543</b>	<b>78,135</b>	<b>1,180,678</b>	<b>100%</b>

## COASTWISE TONNAGES

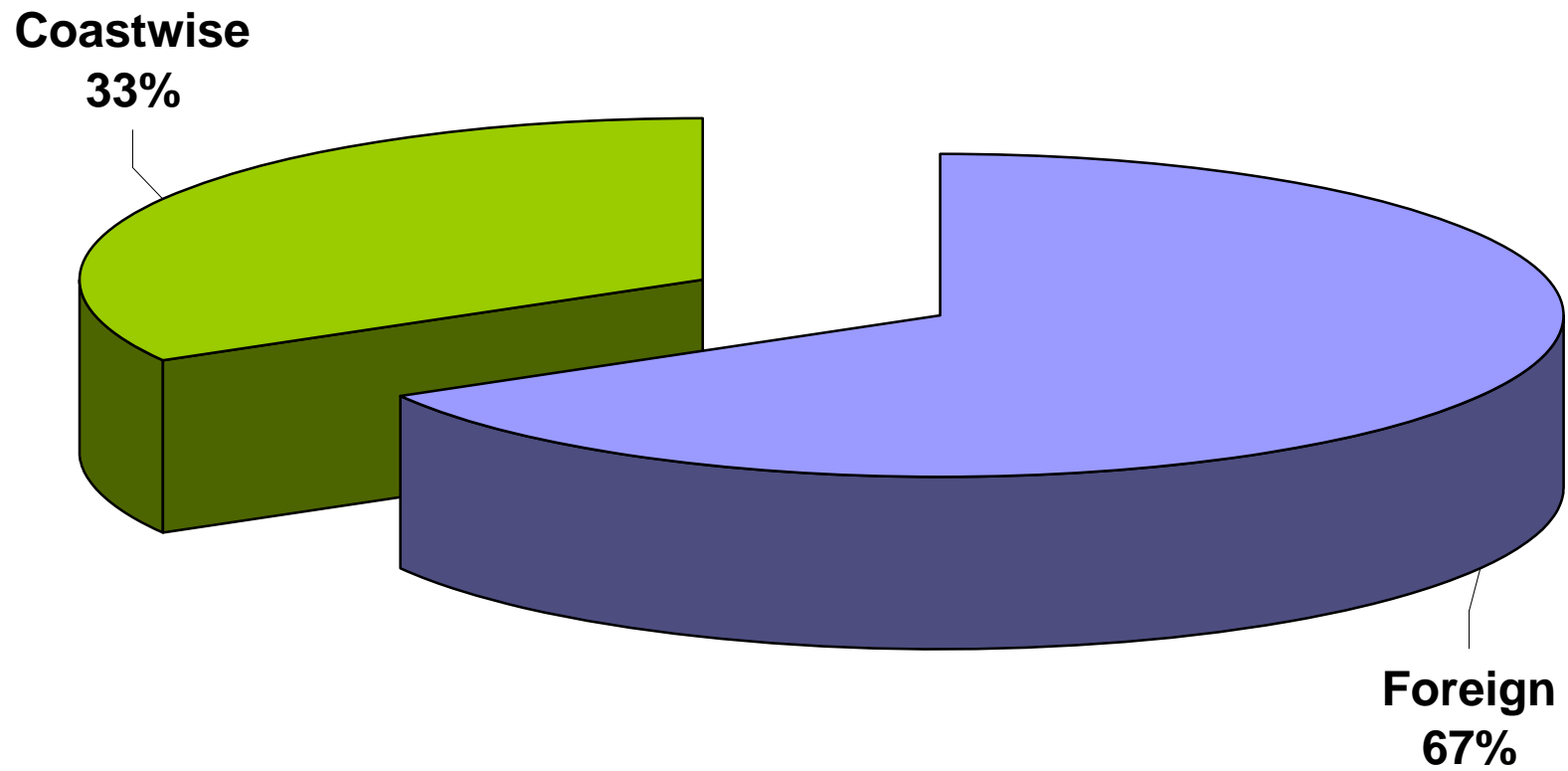
Excluding Unitised Traffic RO/RO Trade CFP

2013

AREA	IMPORTS	EXPORTS	TOTALS	%
Sea	391,809		391,809	99.9%
UK	84	113	197	0.1%
<b>Total Tonnages</b>	<b>391,893</b>	<b>113</b>	<b>392,006</b>	<b>100%</b>

Index

## Principal Trading Areas 2013



## SUMMARY OF TOTAL TONNAGES BY QUAY 2006 - 2013

### Excluding Unitised RO/RO Trade - CFP

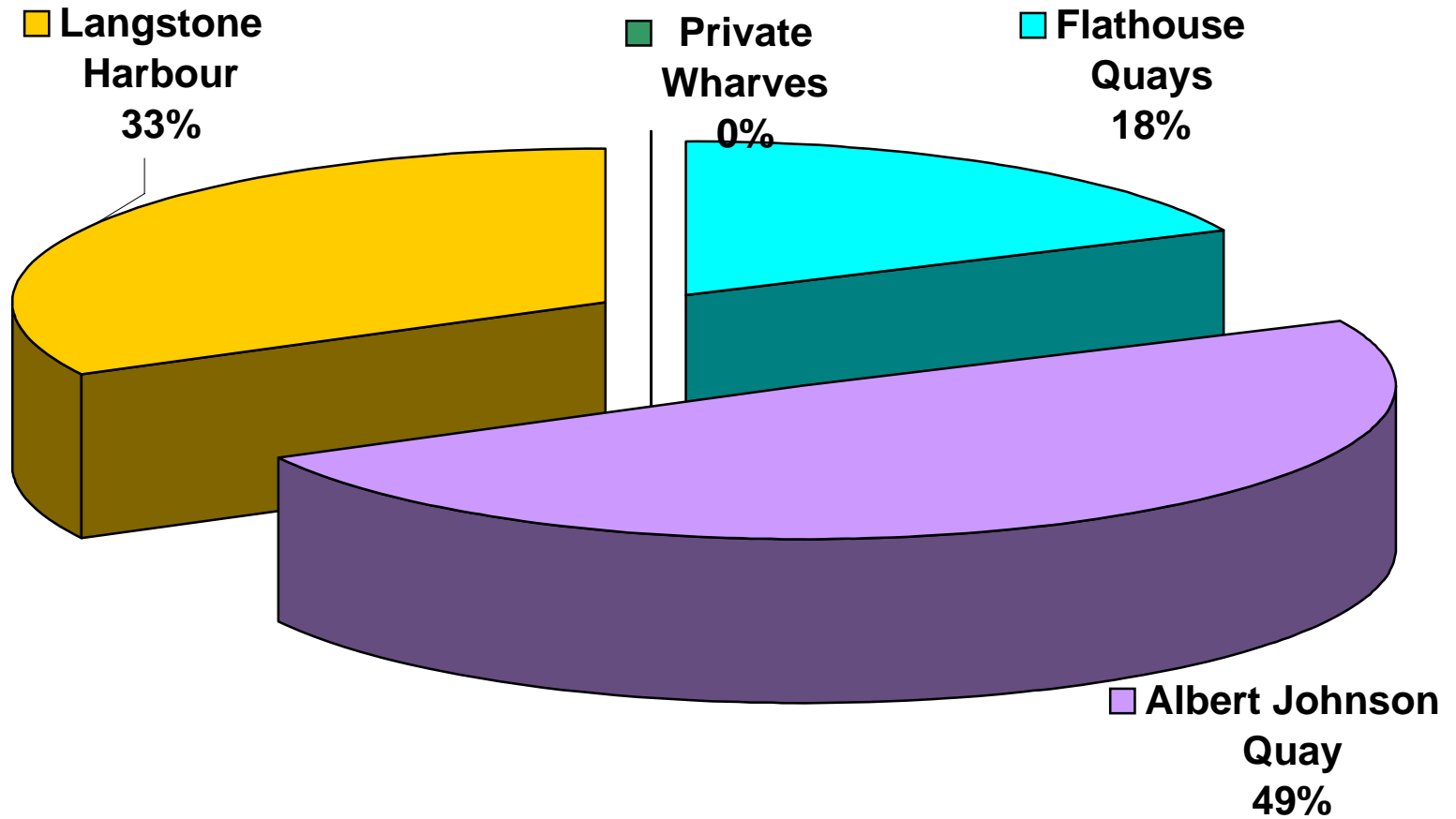
<b>Dock</b>	<b>2006</b>	<b>%</b>	<b>2007</b>	<b>%</b>	<b>2008</b>	<b>%</b>	<b>2009</b>	<b>%</b>	<b>2010</b>	<b>%</b>	<b>2011</b>	<b>%</b>	<b>2012</b>	<b>%</b>	<b>2013</b>	<b>%</b>
<b>Flathouse</b>	287,870	20.8%	265,421	23.6%	206,076	18.2%	279,349	26.5%	264,771	29.0%	137,732	13.8%	160,593	17.1%	215,038	17.9%
<b>Albert Johnson Quay Private Wharves inc Camber</b>	696,203	50.3%	446,481	39.7%	591,281	52.2%	505,003	48.0%	430,424	47.1%	600,109	60.1%	507,857	53.9%	591,278	49.3%
	57,004	4.1%	60,614	5.4%	57,645	5.1%	10,696	1.0%	1,084	0.1%	1,821	0.2%	946	0.1%	197	0.0%
<b>Langstone</b>	342,794	24.8%	352,440	31.3%	277,074	24.5%	257,365	24.5%	216,891	23.8%	258,919	25.9%	272,187	28.9%	391,809	32.7%
<b>Total</b>	<b>1,383,871</b>	<b>100%</b>	<b>1,124,956</b>	<b>100%</b>	<b>1,132,076</b>	<b>100%</b>	<b>1,052,413</b>	<b>100%</b>	<b>913,170</b>	<b>100%</b>	<b>998,581</b>	<b>100%</b>	<b>941,583</b>	<b>100%</b>	<b>1,198,322</b>	<b>100%</b>

<b>Distribution</b>	<b>2006</b>	<b>%</b>	<b>2007</b>	<b>%</b>	<b>2008</b>	<b>%</b>	<b>2009</b>	<b>%</b>	<b>2010</b>	<b>%</b>	<b>2011</b>	<b>%</b>	<b>2012</b>	<b>%</b>	<b>2013</b>	<b>%</b>
<b>Foreign</b>	863,188	65.2%	598,620	53.3%	598,620	53.3%	784,374	74.5%	695,195	76.1%	737,841	73.9%	651,973	69.2%	788,672	65.8%
<b>Coastwise</b>	339,798	25.7%	413,054	36.8%	413,054	36.8%	268,064	25.5%	217,975	23.9%	260,740	26.1%	273,133	29.0%	392,006	32.7%
<b>Channel Islands</b>	120,885	9.1%	111,888	10.0%	111,888	10.0%	-	0.0%	-	0.0%	-	0.0%	-	0.0%	-	0.0%
<b>Empty Containers</b>													16,477	1.7%	17,644	1.5%
<b>Total</b>	<b>1,323,871</b>	<b>100%</b>	<b>1,123,562</b>	<b>100%</b>	<b>1,123,562</b>	<b>100%</b>	<b>1,052,438</b>	<b>100%</b>	<b>913,170</b>	<b>100%</b>	<b>998,581</b>	<b>100%</b>	<b>941,583</b>	<b>100%</b>	<b>1,198,322</b>	<b>100%</b>

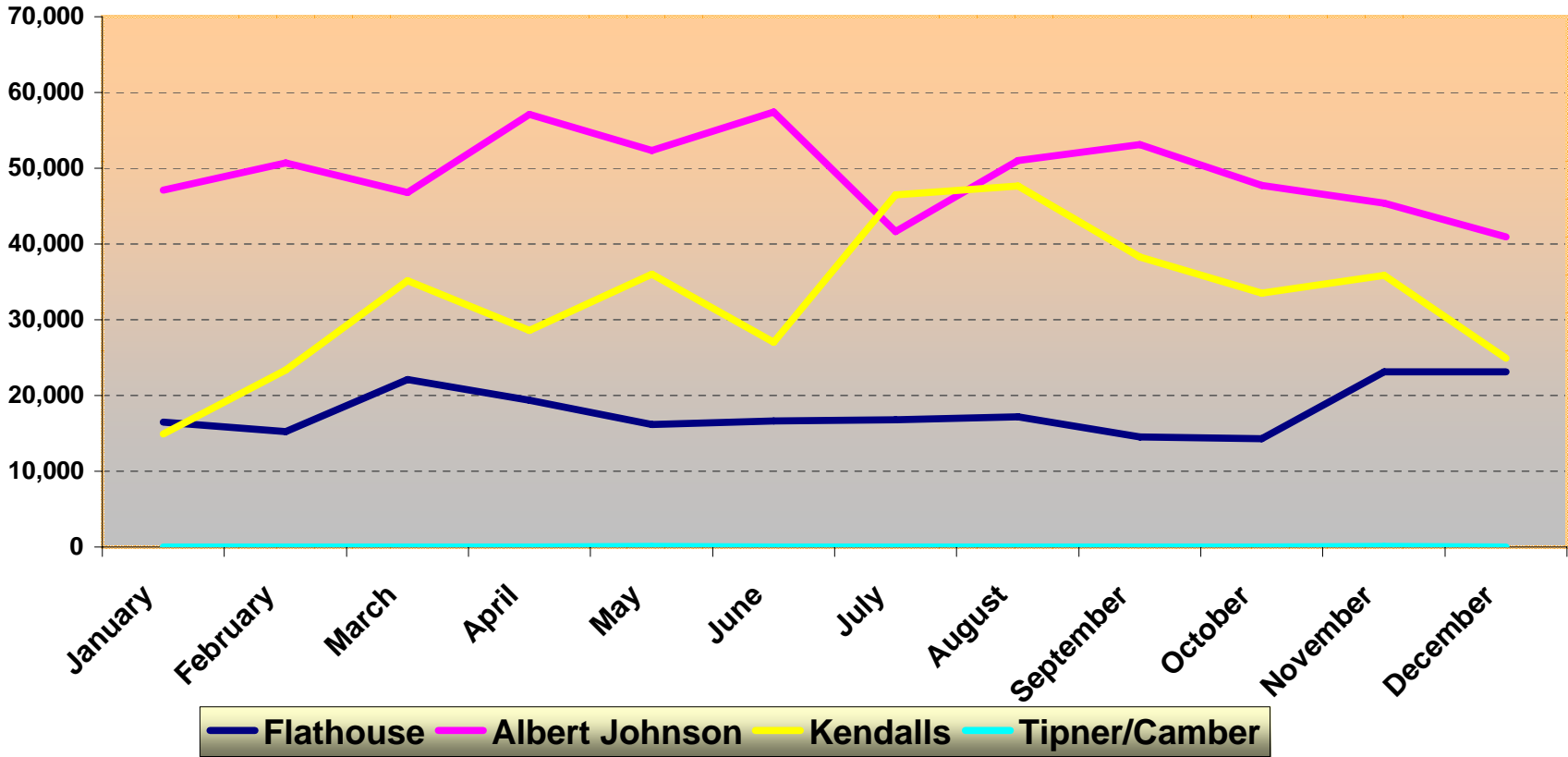
Roll on/Roll Off

Index

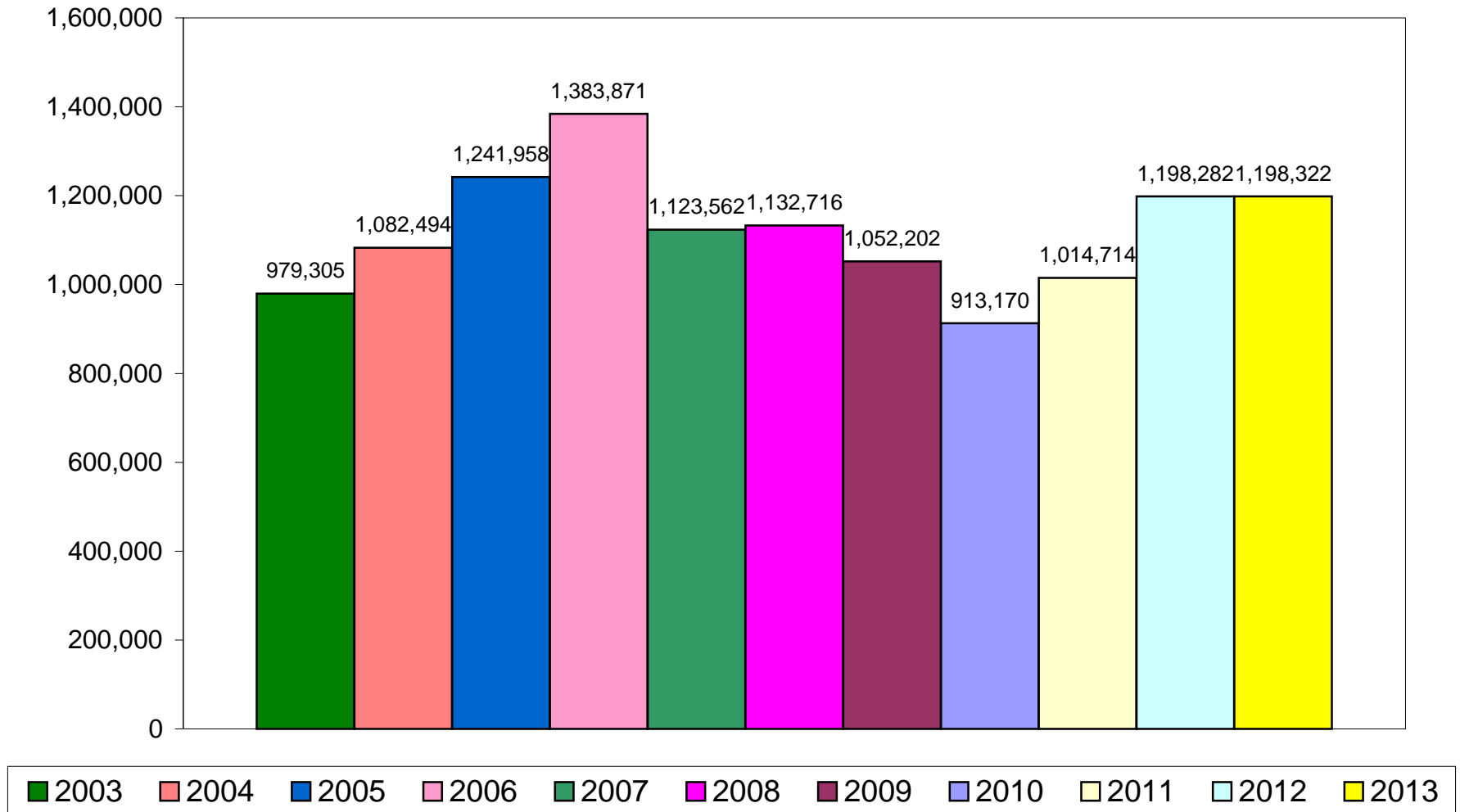
## Docks Tonnages 2013



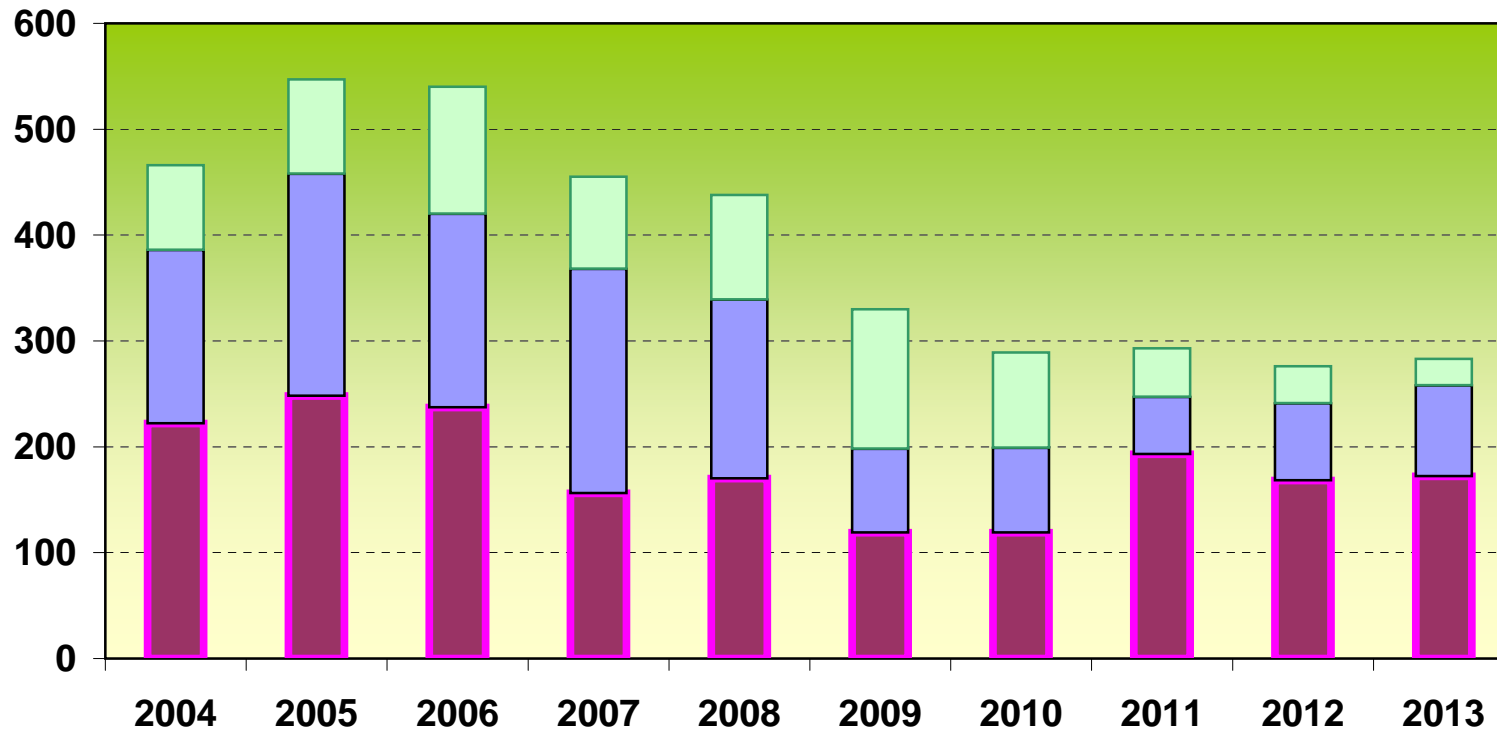
# Monthly Tonnages 2013



# Tonnage Trends 2003-2013



# Commercial Shipping Movements



■ Albert Johnson Quay

■ Flathouse Quays

■ Private Wharves

## Cargo Landed AJQ/Flathouse 2012 - 2013





## ROLL ON/ROLL OFF AND OTHER FERRY SERVICES

2005 - 2013

### Isle of Wight Car Ferry

	2005	2006	2007	2008	2009	2010	2011	2012	2013
Vehicle Units	1,046,635	992,973	996,329	761,259	971,260	948,572	949,581	1,317,404	1,294,717
Passengers	2,760,669	2,628,510	2,551,030	2,028,295	2,495,971	2,446,901	2,724,175	2,398,484	2,326,843
<b>Total</b>	<b>3,807,304</b>	<b>3,621,483</b>	<b>3,547,359</b>	<b>2,789,554</b>	<b>3,467,231</b>	<b>3,395,473</b>	<b>3,673,756</b>	<b>3,715,888</b>	<b>3,621,560</b>

### Isle of Wight Passenger Ferry

	2005	2006	2007	2008	2009	2010	2011	2012	2013
Passengers	1,459,763	1,433,319	1,345,541	1,141,117	1,357,782	1,378,370	1,257,523	1,237,643	1,170,184
<b>Total</b>	<b>1,459,763</b>	<b>1,433,319</b>	<b>1,345,541</b>	<b>1,141,117</b>	<b>1,357,782</b>	<b>1,378,370</b>	<b>1,257,523</b>	<b>1,237,643</b>	<b>1,170,184</b>

### Isle of Wight Hovercraft Service

	2005	2006	2007	2008	2009	2010	2011	2012	2013
Passengers	756,579	779,528	795,776	803,795	849,150	856,736	919,816	845,590	829,562
<b>Total</b>	<b>756,579</b>	<b>779,528</b>	<b>795,776</b>	<b>803,795</b>	<b>849,150</b>	<b>856,736</b>	<b>919,816</b>	<b>845,590</b>	<b>829,562</b>

### Gosport Ferry Passenger Service

	2005	2006	2007	2008	2009	2010	2011	2012	2013
Passengers	3,747,533	3,597,817	3,643,429	3,666,119	3,534,248	3,392,471	3,363,179	3,091,165	3,033,816
<b>Total</b>	<b>3,747,533</b>	<b>3,597,817</b>	<b>3,643,429</b>	<b>3,666,119</b>	<b>3,534,248</b>	<b>3,392,471</b>	<b>3,363,179</b>	<b>3,091,165</b>	<b>3,033,816</b>

### Continental and Channel Island Services

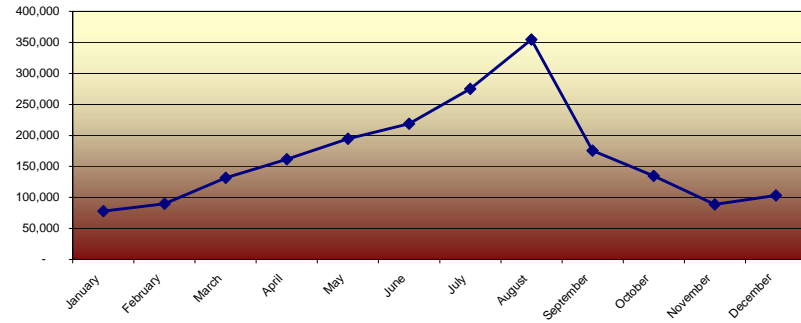
	2005	2006	2007	2008	2009	2010	2011	2012	2013
Vehicle Units	790,237	663,058	648,064	654,685	687,093	693,332	700,551	635,166	636,720
Freight Units	283,735	269,317	268,523	263,620	264,446	256,852	250,558	232,135	219,963
Passengers inc cruise	2,711,126	2,226,253	2,163,111	2,160,208	2,225,377	2,290,088	2,175,760	2,023,549	2,006,747
<b>Total</b>	<b>3,785,098</b>	<b>3,158,628</b>	<b>3,079,698</b>	<b>3,078,513</b>	<b>3,176,916</b>	<b>3,240,272</b>	<b>3,126,869</b>	<b>2,890,850</b>	<b>2,863,430</b>

Shipping by Quay

Index

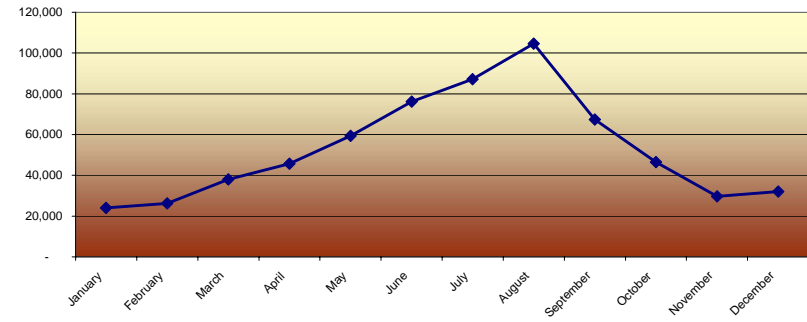
# Monthly Throughput Traffic at Portsmouth International Port 2013

## Passengers 2013



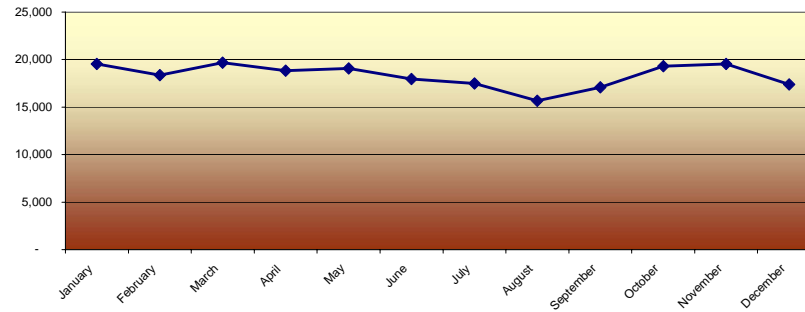
Inc cruise

## Passenger Vehicles 2013



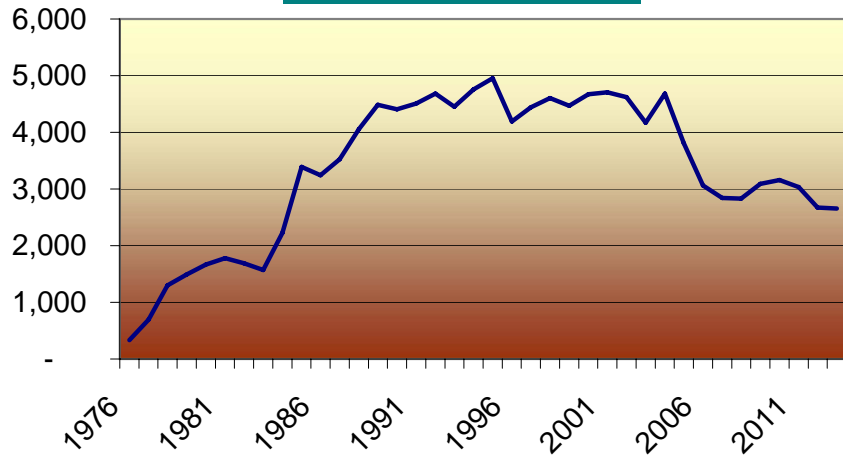
Inc cruise

## Freight Units 2013

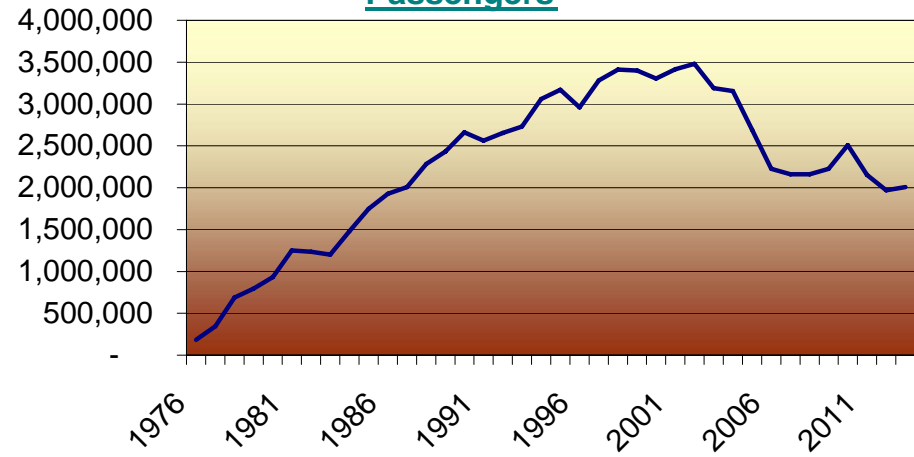


# Growth 1976 to 2013

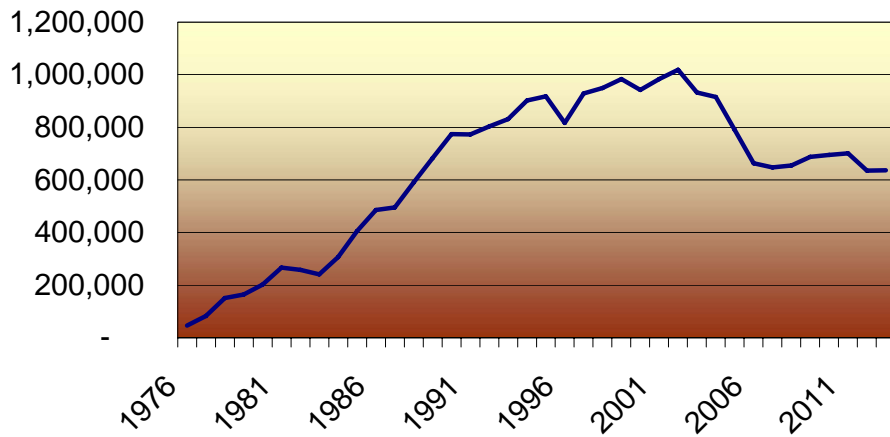
## Shipping Movements



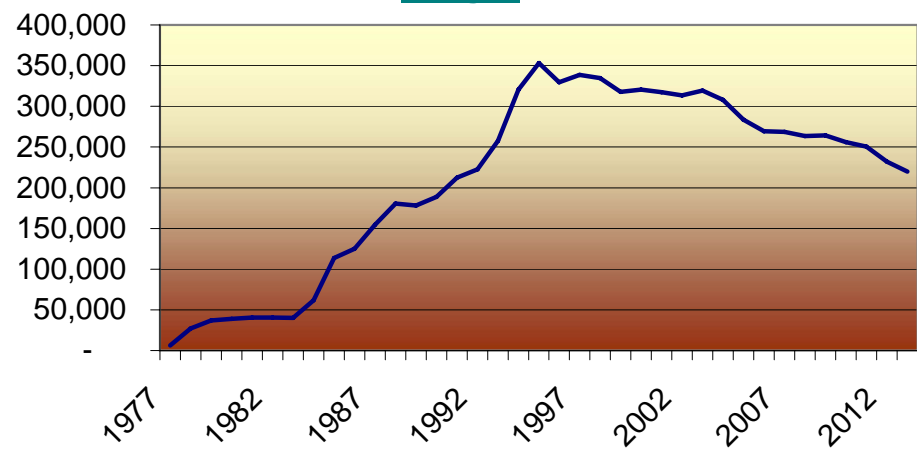
## Passengers



## Passenger Vehicles



## Freight



## SHIPPING ARRIVALS

2005 - 2013

<b>Dock</b>	<b>2005</b>	<b>2006</b>	<b>2007</b>	<b>2008</b>	<b>2009</b>	<b>2010</b>	<b>2011</b>	<b>2012</b>	<b>2013</b>
Flathouse	209	183	212	169	78	78	54	73	87
Albert Johnson Quay	248	237	156	170	118	119	193	168	169
Private Wharves	89	120	87	103	84	59	48	40	25
I O W Car Ferry	12,336	11,207	11,255	11,547	16,822	10,819	10,795	10,201	8,911
I O W Passenger Ferry	11,602	11,563	11,773	11,789	10,263	11,113	10,582	9,970	8,604
Hovertravel	9,640	10,387	9,750	9,750	9,750	10,529	10,557	9,760	9,760
Gosport Ferry	34,744	34,744	36,400	36,400	36,400	35,000	34,866	34,866	34,582
Park and Boat - seasonal	82	-	-	-	-	-	-	-	102
Portsmouth International Port (inc bunkers)	5,102	4,155	3,041	3,080	3,272	4,329	4,393	3,860	3,829
<b>Total</b>	<b>74,052</b>	<b>72,596</b>	<b>72,674</b>	<b>73,008</b>	<b>76,787</b>	<b>72,046</b>	<b>71,488</b>	<b>68,938</b>	<b>66,069</b>

Index